

# STACKER-RECLAIMER & CONVEYOR SYSTEM

[www.dehatech.com](http://www.dehatech.com)

The Right Bucket Wheel Stacker - Reclaimer To Meet Your Needs



## ABOUT DEHA TECH

Deha Tech is an International acting EPC (Engineering, Procurement and Construction) Company committed to obtain the highest standard of client satisfaction and providing long-term business relations with its clients. Since 2009 we're proud to have completed more than 100 projects and work every day to be a global partner with the promise of excellence.

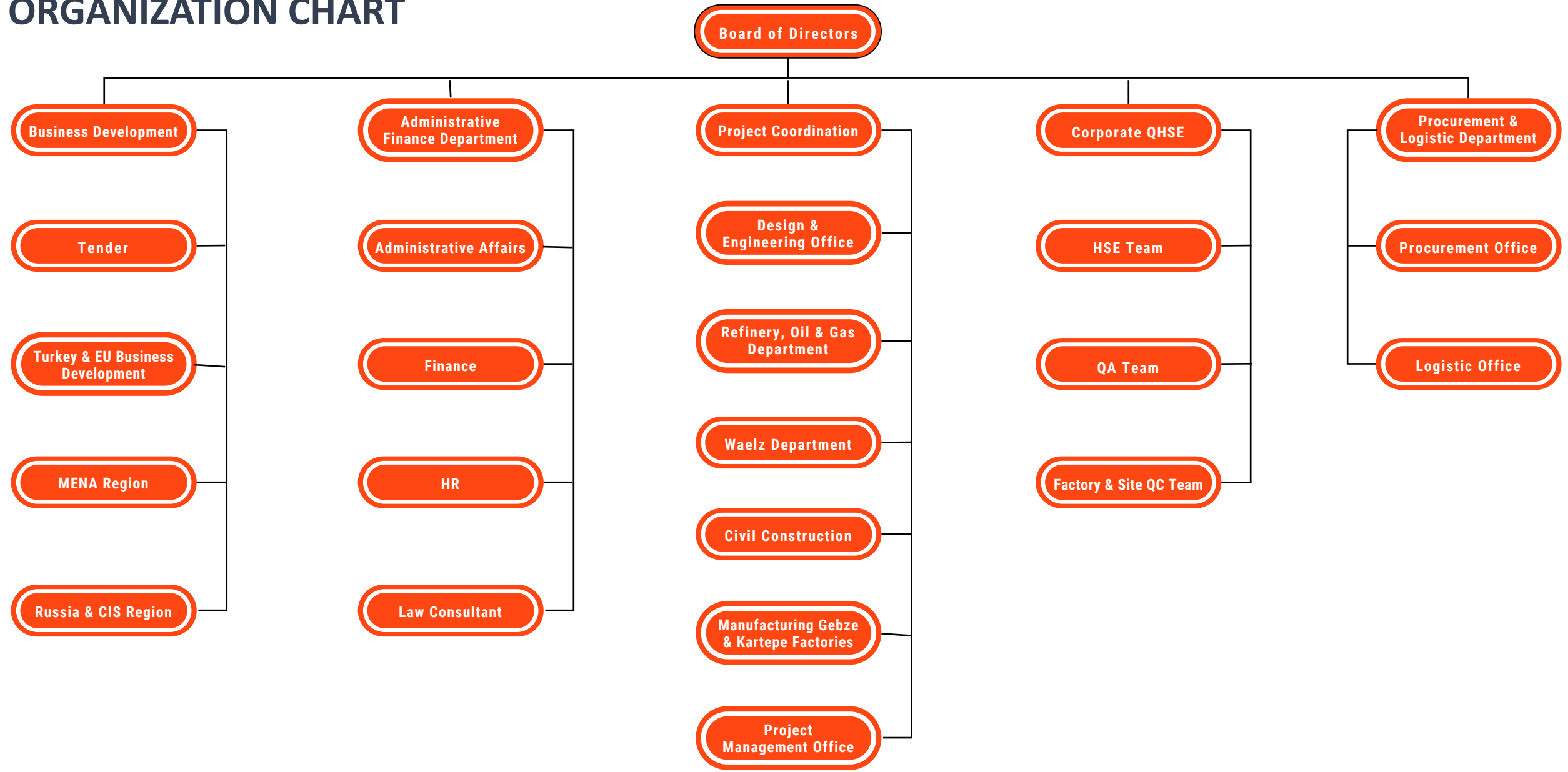
+ We offer services in the fields of design & engineering,  
+ procurement & logistic, fabrication, construction, and  
+ commissioning for various industries

Deha Tech is always improving its know-how, rich human resources and capacity. Making use of its values and capabilities today, Deha Tech has turned into a leading international EPC contractor.

On behalf of the company's board of directors, executives, employees, and subsidiaries, we would like to thank all our clients, partners, business allies to rely on us and support our business all along.



## ORGANIZATION CHART



# COMPANY PROFILE

## DEHA TECH AROUND THE WORLD

### Central Office

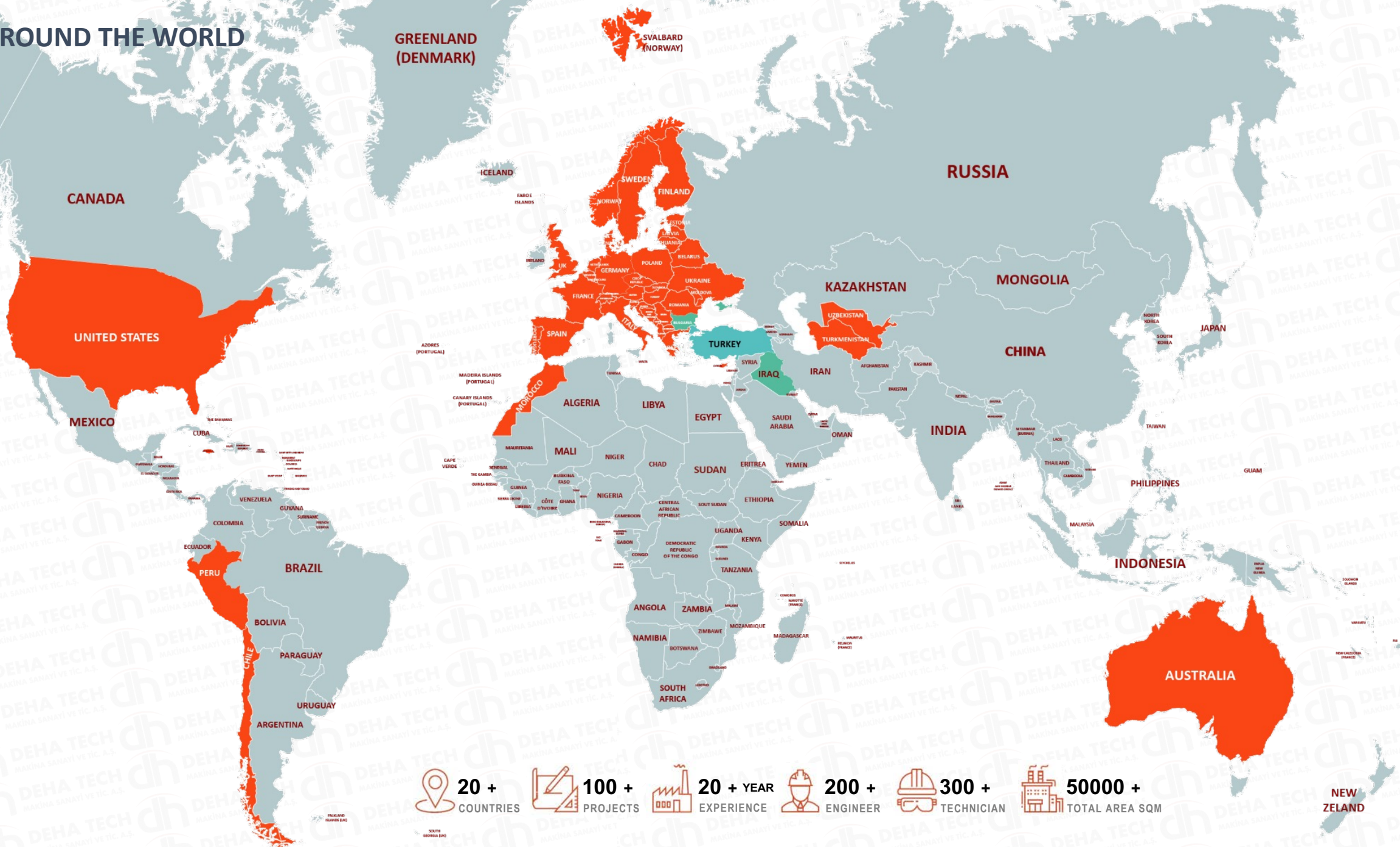
Turkey

### Branch Offices

Bulgaria  
Iraq  
Uzbekistan

### Projects

Turkey  
Italy  
Spain  
Finland  
Iraq  
Bulgaria  
United Kingdom  
France  
United States  
Peru  
Uzbekistan  
Turkmenistan  
Morocco  
Cyprus  
Jamaica  
Switzerland  
Australia  
Chile  
Norway



-  **20 +**  
COUNTRIES
-  **100 +**  
PROJECTS
-  **20 + YEAR**  
EXPERIENCE
-  **200 +**  
ENGINEER
-  **300 +**  
TECHNICIAN
-  **50000 +**  
TOTAL AREA SQM

## QUALITY POLICY

Deha Tech minimizes accidents by preventing the possibility of an accident at its source during all of its activities and makes an effort to prevent occupational diseases.

Deha Tech provides consultancy and participation to OHS activities with the awareness that all subcontractors, visitors and employees are responsible for their own safety in order to achieve the targets for occupational health and safety of all employees.

Seeing as the most important priority of applicable Occupational Health & Safety Legislation and to comply with the terms of Membership Organizations, Hazard & Risk assessment, identifying existing hazards and risks and to provide possible protection, activities and products are brought into an integral commitment, work environment and occupational Health & Continuous improvement in safety practices adopted as policy.

Deha Tech provides customer satisfaction with Quality, Price and On-time Delivery. Quality is the first principle of DEHA TECH. Our Quality System is certified in under the requirements of EN ISO 9001 standard.



## ENVIRONMENTAL POLICY

Deha Tech works in an environmentally and friendly way without harming the environment with its works and manufacturing methods in its sector and activity fields.

Deha Tech is aware of its responsibilities regarding the efficient use of the limited resources of the environment and the earth we live in.

We adopt to be respectful to the environment in its activities and comply with the legal regulations regarding the environment.



### Rights / Responsibility / Aim

As Deha Tech, we believe and follow all that social responsibility projects are part of the criteria of sustainability.

## SOCIAL RESPONSIBILITY

As part of its sustainability approach, Deha Tech has planned its studies on **Education**, Art, Nature and **Environment**, Employment, of Women and Youth, Animal Rights and will share it in the near future



ITU Races sponsored by Deha Tech

**WE'RE PROUD OF OUR SAFETY, INTEGRITY, TEAMWORK AND EXCELLENCE COMMITMENT**

## SUSTAINABILITY



The importance of every drop in water management



Collection and classification of waste at source at solid waste management



The contribution of shared decision-making, training and participation in our processes to our productivity principle



Our belief in the contribution of women and youth



We give priority to education with the awareness that there are no limits in personal development.



Social Approach



Environment



Management

## OCCUPATIONAL HEALTH AND SAFETY

Our priority is to maintain the health and safety of our employees and public, to minimise the environmental impact associated with our activities.

Working at Deha Tech means becoming a part of energetic team committed to obtain objectives in international conditions.

We ensure that Deha Tech Group Companies have effective occupational health and safety systems to generate customer confidence and protecting employees.



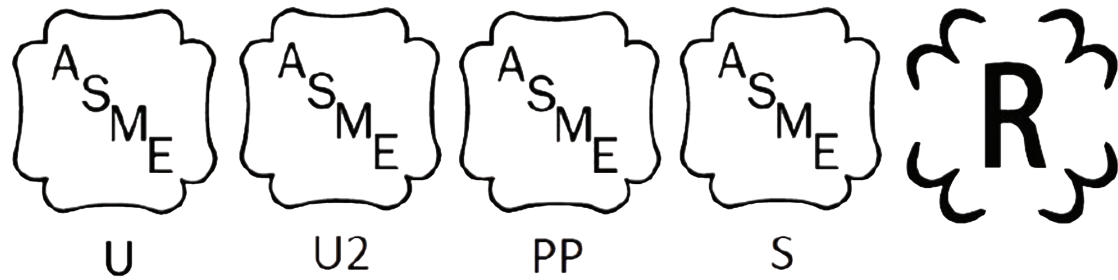
### SAFETY FIRST



We ensure that organizations have effective occupational health and safety systems in place to protect employees

- ★ Think Safe
- ★ Act Safe
- ★ Stay Safe

OUR CERTIFICATES












EXC - 4 CERTIFICATED



# BUSINESS PARTNERS



# TAMAN PORT STACKER – RECLAIMER & CONVEYOR SYSTEM

Bucket Wheel Stacker-Reclaimers, Conveyors (47,5 T + 703,1 T)

Bucket wheel reclaimers are ideal for handling and moving large amounts of bulk materials at the earliest time.

They can be designed as combined bucket wheel stacker reclaimers for handling huge volumes of coal, ores, and other materials in ports, power plants, stockyards.

Our bucket wheel reclaimers, which are the result of experience and technical competence, combine stability with remarkable speed and high efficiency.

Mechanical Installation, Electrical Installation & Commissioning

# TAMAN PORT STACKER – RECLAIMER & CONVEYOR SYSTEM

Bucket Wheel Stacker-Reclaimer Erection



Stacker-Reclaimer Bucket wheel Testing



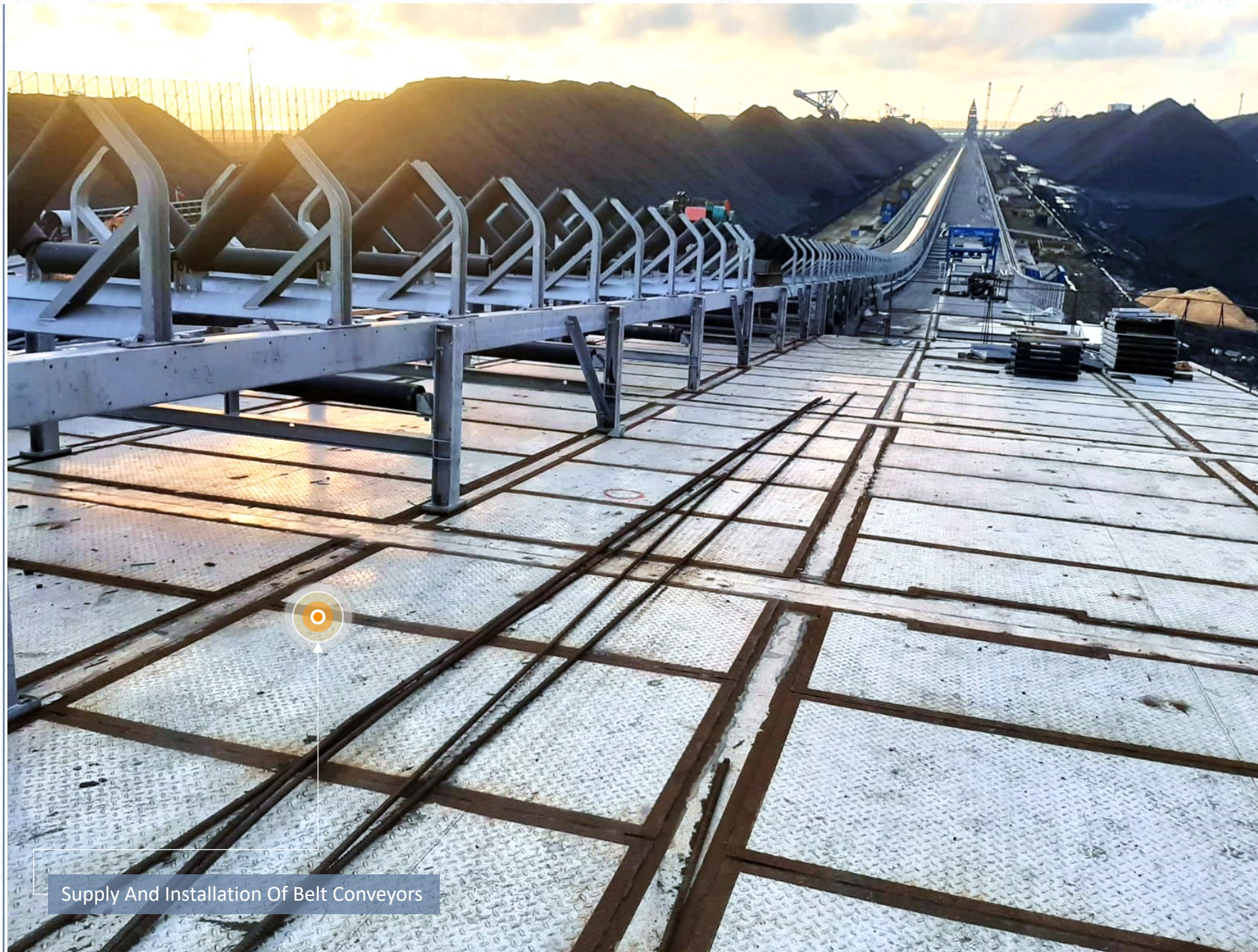
Bucket wheel Stacker-Reclaimer Erection



Supply Stacker-Reclaimers



# TAMAN PORT STACKER – RECLAIMER & CONVEYOR SYSTEM



Supply And Installation Of Belt Conveyors



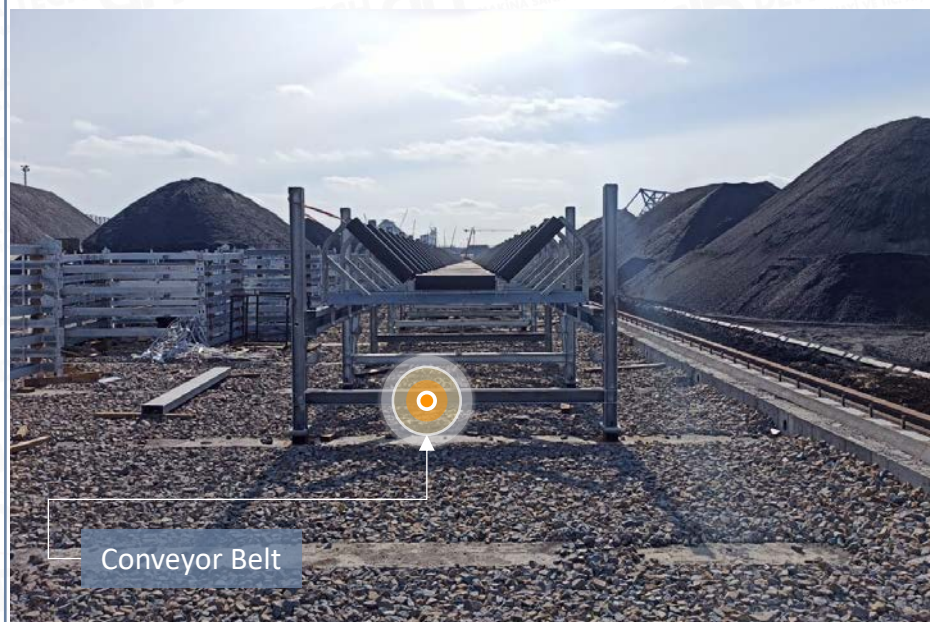
Installation Of Belt Conveyors

# TAMAN PORT STACKER – RECLAIMER & CONVEYOR SYSTEM



Supply And Installation Of Bucket Wheel Stacker - Reclaimer

# TAMAN PORT STACKER – RECLAIMER & CONVEYOR SYSTEM

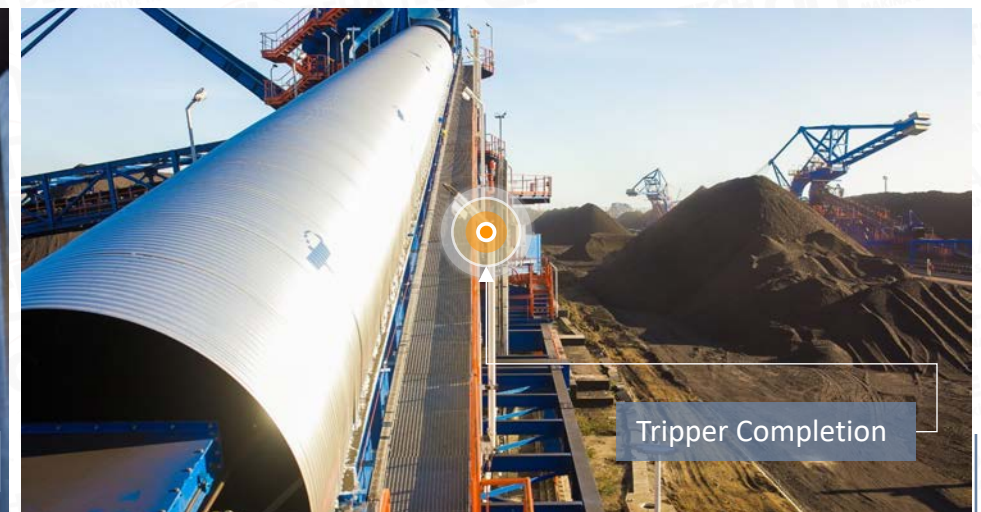
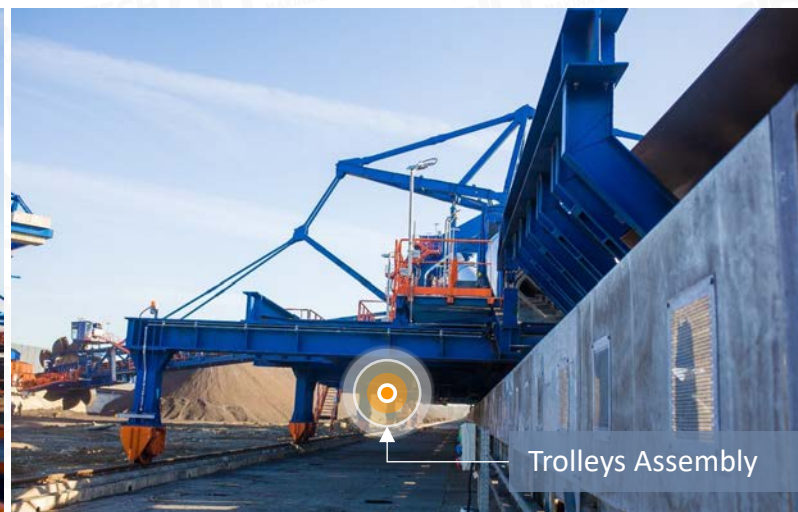
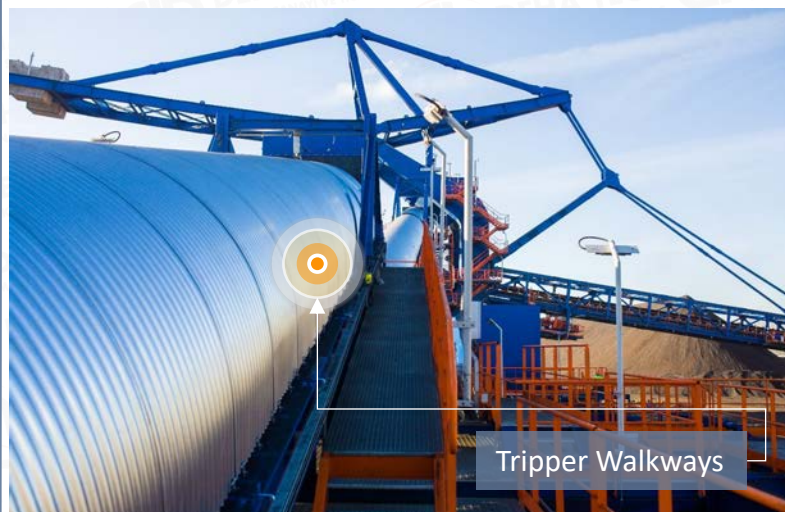


# TAMAN PORT STACKER – RECLAIMER & CONVEYOR SYSTEM



Automatic Storage For Stacking And Reclaiming

# TAMAN PORT STACKER – RECLAIMER & CONVEYOR SYSTEM



# TAMAN PORT STACKER – RECLAIMER & CONVEYOR SYSTEM

Stacker-Reclaimer & Tripper Overview



Bucket Wheel Stacker-Reclaimer



Stacker-Reclaimer & Tripper Coal Handling



Stacker-Reclaimer Overview



# TAMAN PORT STACKER – RECLAIMER & CONVEYOR SYSTEM



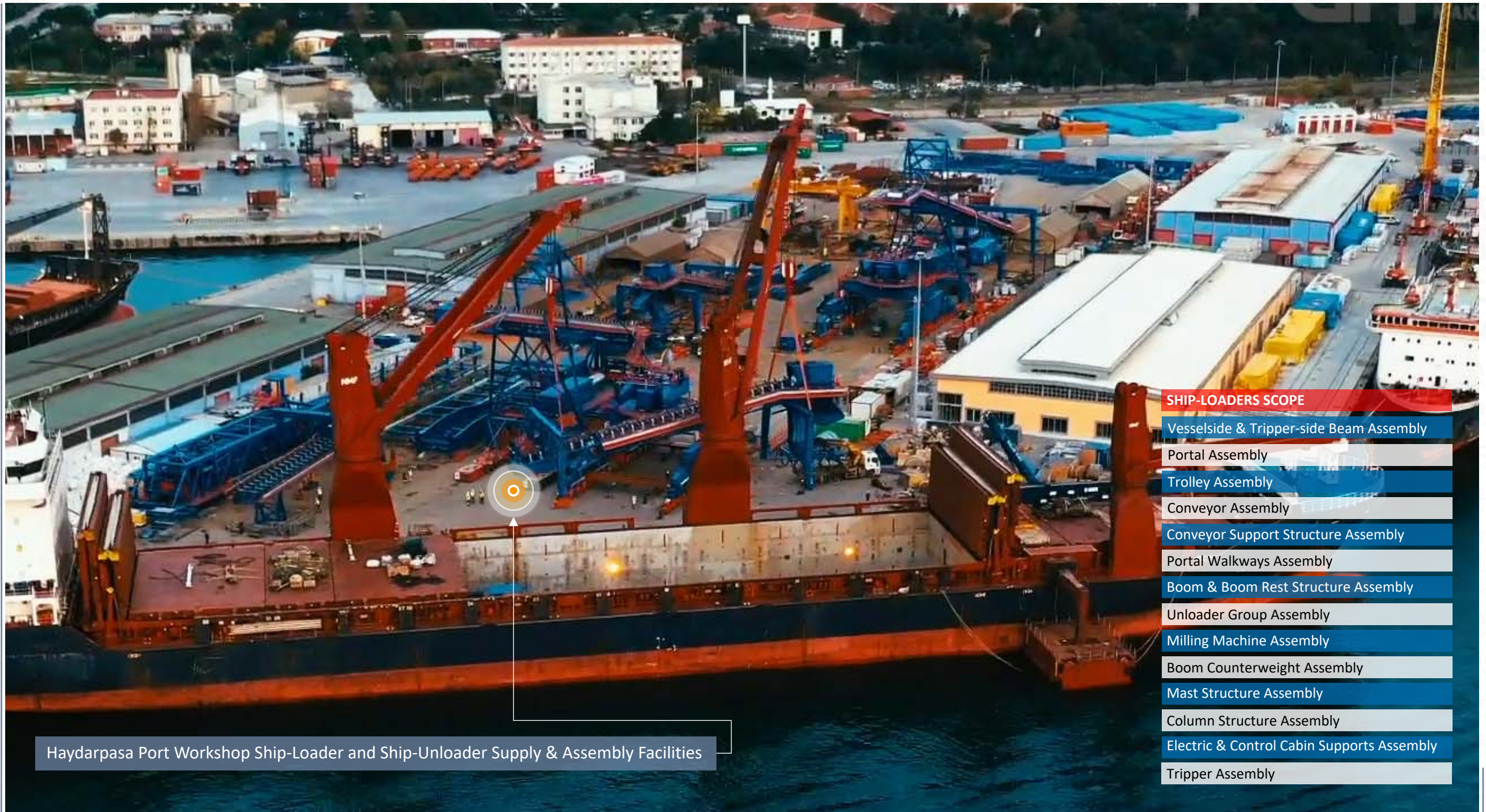
Stacker-Reclaimer Completion

# SHIP LOADER & SHIP UNLOADER

[www.dehatech.com](http://www.dehatech.com)



# SHIP LOADER AND SHIP UNLOADER WORKSHOP FACILITIES

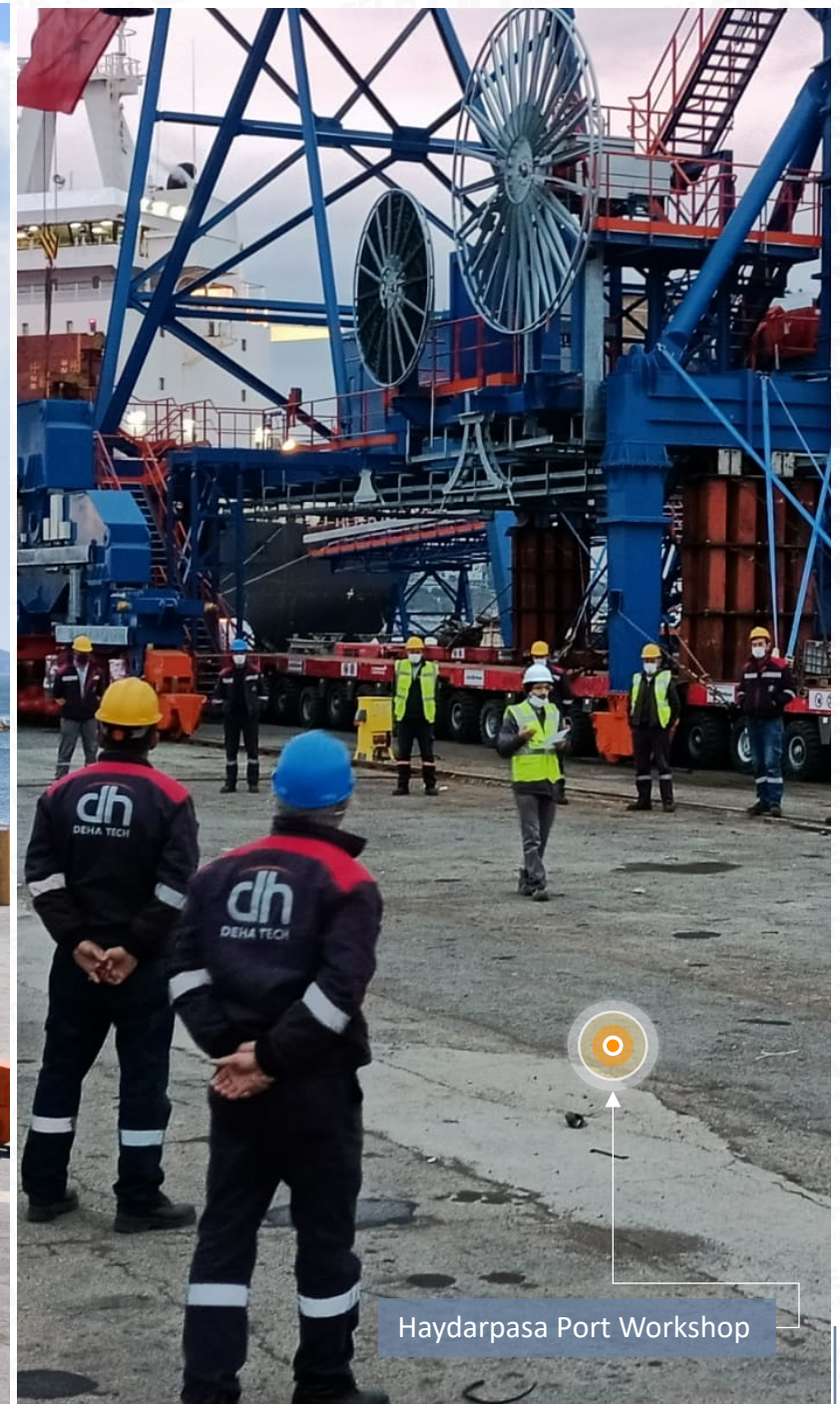


## SHIP-LOADERS SCOPE

- Vesselside & Tripper-side Beam Assembly
- Portal Assembly
- Trolley Assembly
- Conveyor Assembly
- Conveyor Support Structure Assembly
- Portal Walkways Assembly
- Boom & Boom Rest Structure Assembly
- Unloader Group Assembly
- Milling Machine Assembly
- Boom Counterweight Assembly
- Mast Structure Assembly
- Column Structure Assembly
- Electric & Control Cabin Supports Assembly
- Tripper Assembly

Haydarpasa Port Workshop Ship-Loader and Ship-Unloader Supply & Assembly Facilities

# SHIP LOADER WORKSHOP FACILITIES



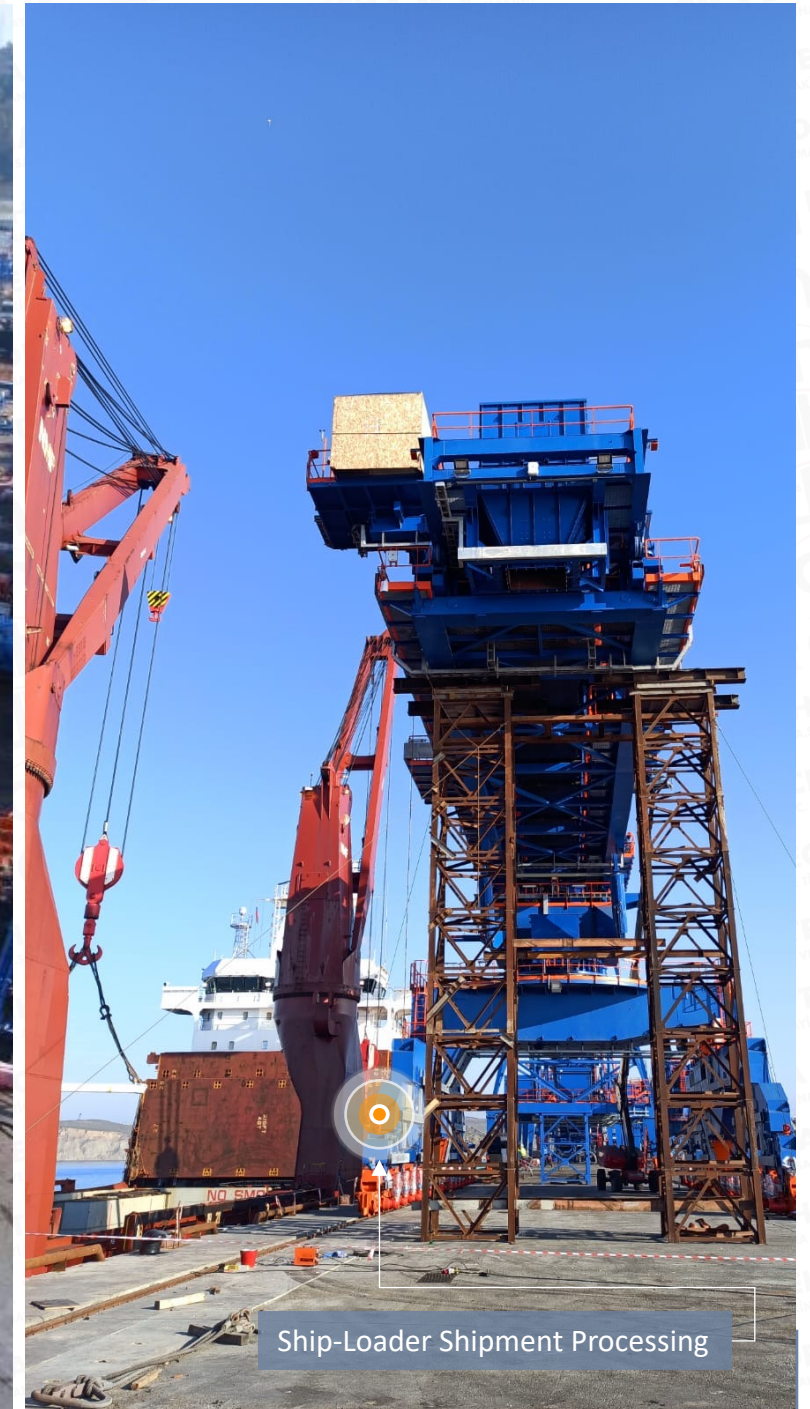
4 Nos. 8000 TPH Coal Ship-Loader

Haydarpasa Port Workshop

# SHIP LOADER AND WORKSHOP FACILITIES



4 Nos. 8000 TPH Coal Ship-Loader Assembly



Ship-Loader Shipment Processing

# SHIP LOADER WORKSHOP FACILITIES



Ship-Loader Shipment Processing



Ship-Loader Boom Shipment Processing

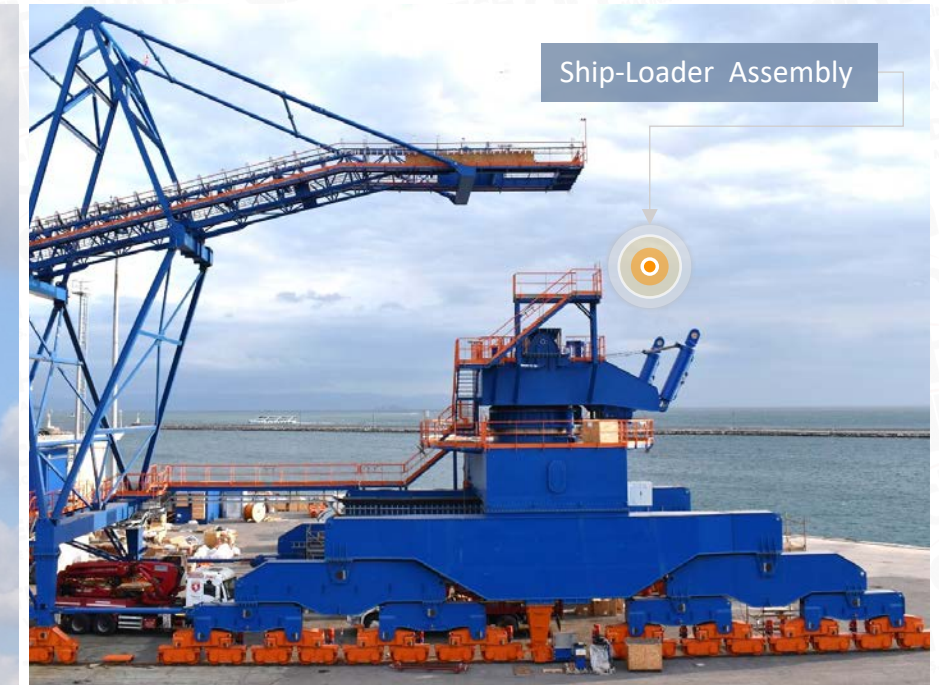


Ship-Loader Boom Shipment Processing

# SHIP LOADER WORKSHOP FACILITIES



Haydarpasa Port Workshop Ship-Loaders Assembly



Ship-Loader Assembly

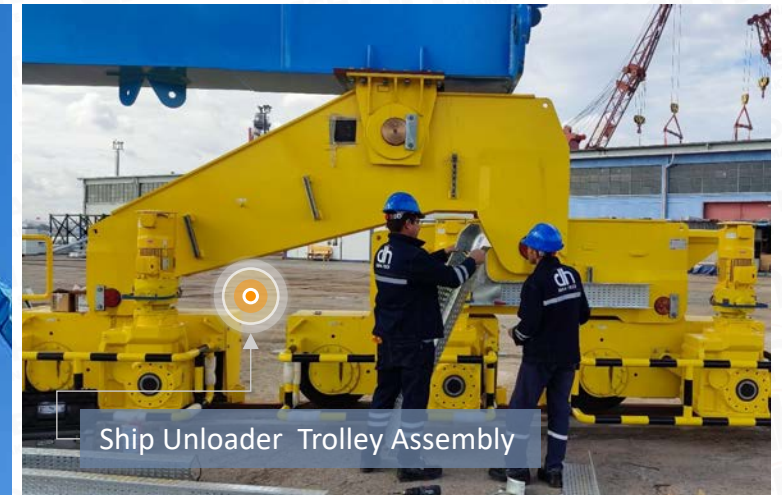


Ship-Loader Shipment Processing

# SHIP UNLOADER WORKSHOP FACILITIES



Ship Unloader Lower Portal Assembly

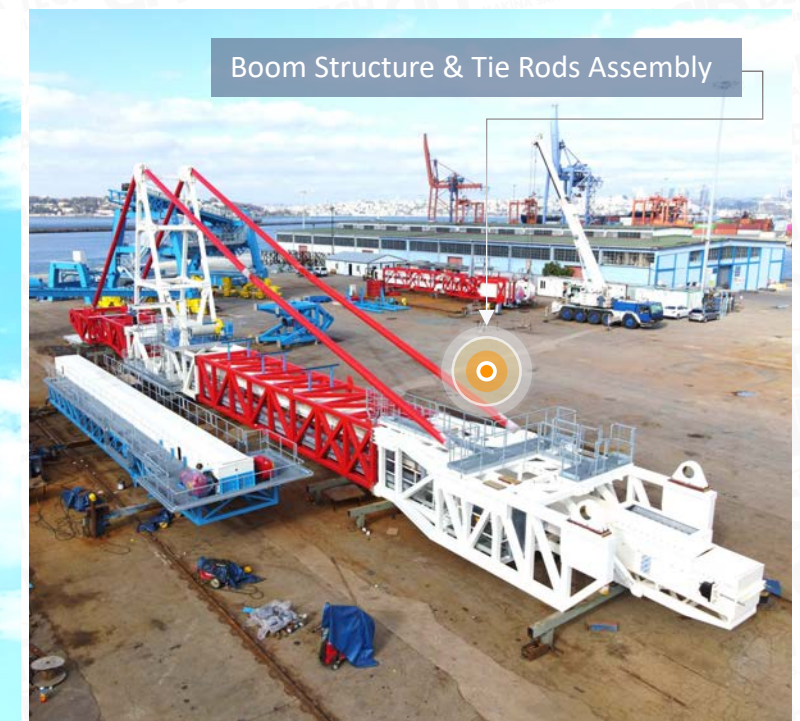


Ship Unloader Trolley Assembly



Ship Unloader Trolley Assembly

# SHIP UNLOADER WORKSHOP FACILITIES

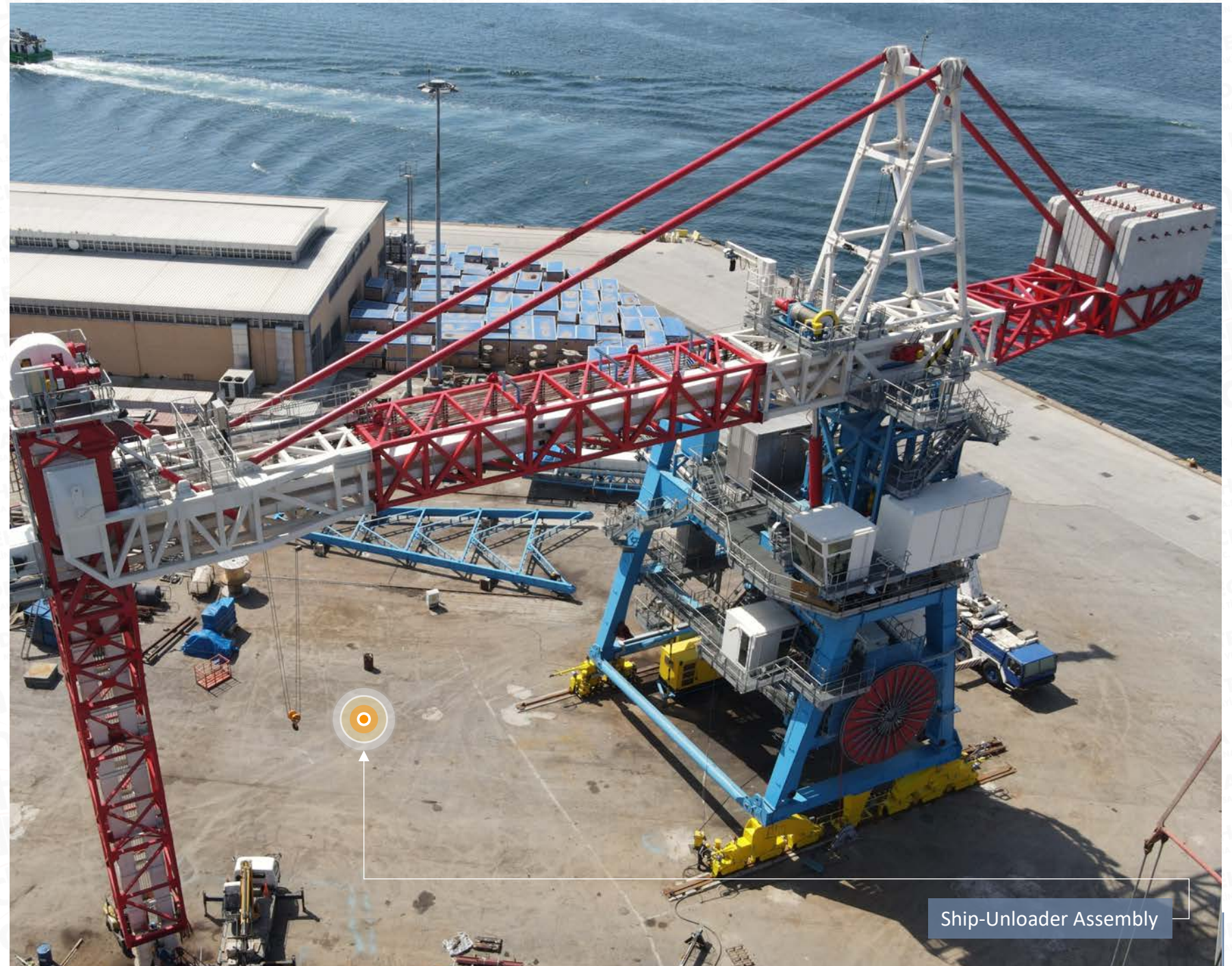
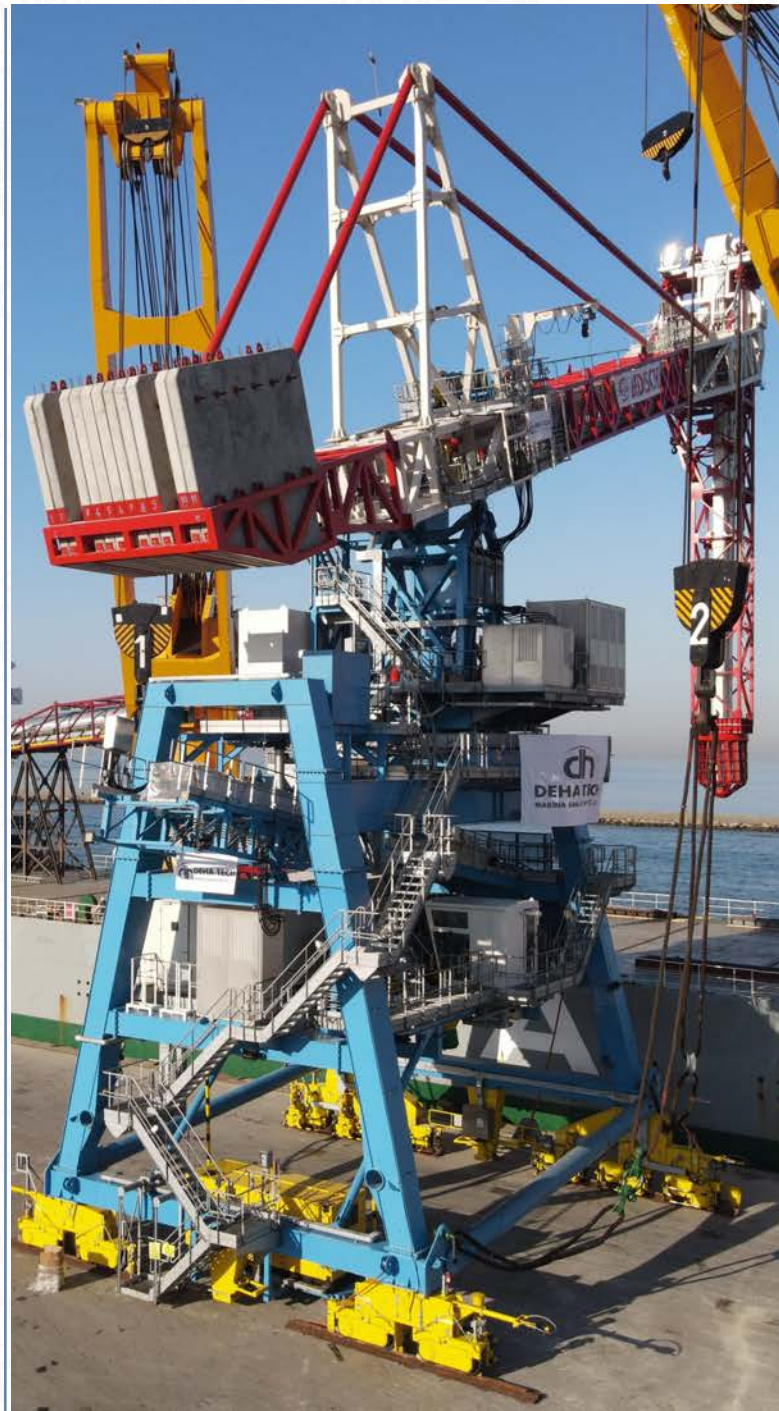


# SHIP UNLOADER WORKSHOP FACILITIES



Ship-Unloader Assembly

# SHIP UNLOADER WORKSHOP FACILITIES



Ship-Unloader Assembly

A large group of employees, mostly men wearing yellow hard hats and dark work uniforms with reflective stripes, are posed in several rows in front of a modern building. The building has large glass windows and a prominent logo consisting of the letters 'dh' in a stylized font with an orange arc above it, followed by the text 'DEHA TECH' in large, bold, grey letters. Some employees in the front row are wearing white hard hats and high-visibility yellow safety vests. The scene is set outdoors during the day.

# dh DEHA TECH

## MANUFACTURING PLANTS

# KARTEPE FACTORY 1 PROFILE

<b>Location</b>	Kartepe	<b>Status</b>	Active
<b>Open Area</b>	18.000 m <sup>2</sup>	<b>Closed Area</b>	10.000 m <sup>2</sup>
<b>Production Capacity</b>	4.800 t	<b>Personnel</b>	150
<b>Main Equipment</b>	<p>1500 mm x 300 mm Hydraulic Press 300 t                  HPK 100 Profile and Pipe Rolling Machine                  MIG / MAG Welding Machines                  TIG Welding Machines                  Aluminium Welding Machines                  Submerged Arc Welding Machines                  Sleeve Welding Machine                  Electric Welding Machine                  Screw Lathe                  Weighing Machine 150 t                  Band Saw Cutting Machine, D 1000 mm                  Radial Drill + Threading, Hole D 50 mm                  3 x 4 Rolls Hydraulic Plate Bending Machine                  Up to 80 mm x 3000 mm Bending Capacity                  Up to 12 mm x 3000 mm Bending Capacity                  Up to 60 mm x 3000 mm Bending Capacity</p>		
<b>Crane Capacity</b>	<p>8 x 30 t Overhead Cranes x (h) 9.5 m                  1 x 20 t Portal Crane x (h) 9.5 m                  2 x 25 t Portal Cranes x (h) 9.5 m                  1 x 30 t Portal Crane x (h) 9.5 m                  1 x 15 t Portal Crane x (h) 9.5 m</p>		



# KARTEPE FACTORY 2 PROFILE

<b>Location</b>	Kartepe
<b>Status</b>	Active
<b>Open Area</b>	2.500 m <sup>2</sup>
<b>Closed Area</b>	2.500 m <sup>2</sup>
<b>Production Capacity</b>	5.000 t
<b>Personnel</b>	40
<b>Main Equipment</b>	3 m x 12 m CNC Plasma + Oksi (Angle Cutting) 2,5 m x 12 m CNC Plasma (Angle Cutting) 12 m Plasma Pipe Cutting Machine Band Saw Cutting Machine Radial Drill + Threading, Hole D 50 mm 7100*600 mm Hydraulic Bending 700 t 1020*150 mm Hydraulic Bending 150 t 4000*440 mm Hydraulic Bending 440 t Screw Lathe Sand Blasting Cabinet & Paint Area CNC Milling Machine Universal Milling Machine Turning Lathe CNC Turning Machine
<b>Crane Capacity</b>	4 x 10 t Crane x (h) 7.3 m



# GEBZE FACTORY PROFILE

<b>Location</b>	Gebze
<b>Status</b>	Active
<b>Open Area</b>	1.000 m <sup>2</sup>
<b>Closed Area</b>	3.000 m <sup>2</sup>
<b>Production Capacity</b>	2.200 t
<b>Personnel</b>	65
<b>Main Equipment</b>	3 m x 12 m CNC Plasma + Oksi (Angle Cutting) Radial Drill + Threading, Hole D 50 mm Band Saw Cutting Machine Screw Lathe 2 x Submerged Arc Welding Machines MIG / MAG Welding Machines TIG Welding Machine Electric Welding Machine 4 Roll 40 mm x 3000 mm Bending Machine Up to 30 mm x 3000 mm Bending Capacity
<b>Crane Capacity</b>	1 x 30 t Overhead Crane x (h) 8 m 2 x 20 t Overhead Crane x (h) 8 m 1 x 10 t Portal Crane x (h) 8 m



# HAYDARPASA PORT PROFILE

<b>Location</b>	Haydarpaşa Port
<b>Status</b>	Active
<b>Open Area</b>	50.000 m <sup>2</sup>
<b>Closed Area</b>	1.000 m <sup>2</sup>
<b>Production Capacity</b>	4.500 Tons
<b>Personnel</b>	230



# KARTEPE FACTORY 1 GENERAL VIEW

150 Ton Weighbridge (24m x 3m)

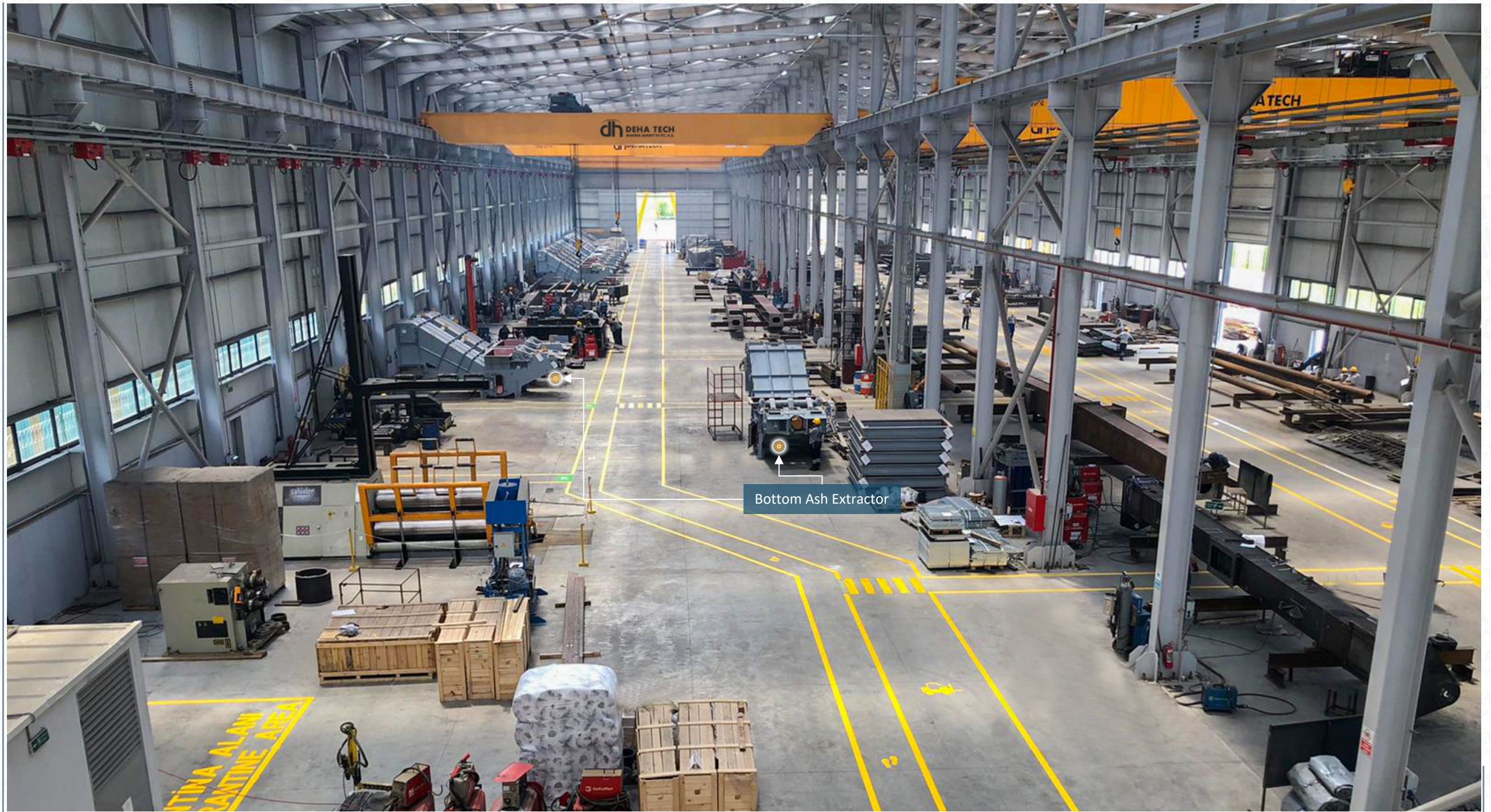
20 Ton Gantry Crane

25 Ton Gantry Cranes

30 + 15 Ton Gantry Crane

Deha Tech continues to provide the highest quality services worldwide at full speed, with a total of 2000 employees, 4 factories and 1 port in a 59000 sqm production area.

# DEHA TECH KARTEPE FACTORY INTERIOR VIEW



Bottom Ash Extractor

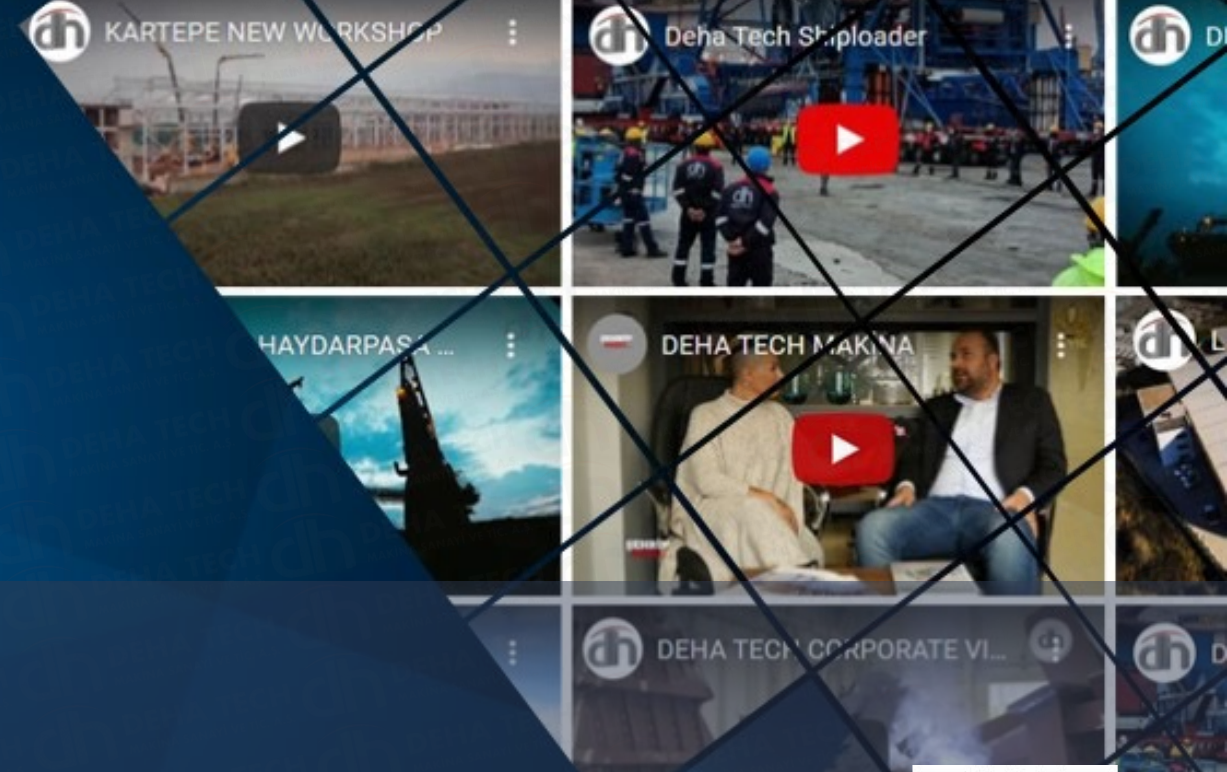
# DEHA TECH KARTEPE FACTORY GENERAL VIEW



Fast Response  
Technology Driven Projects  
Sustainable Profitability and Financial Stability

DEHA TECH KARTEPE FACTORY 1

# DEHA TECH`S CONTACT DETAILS



www.dehatech.com

## ▶ Deha Tech Headquarters

**A :** Kemeraltı Caddesi No:28, Pk:34425,  
Müeyyedzade Mahallesi, Karaköy /  
İSTANBUL / TR

**W :** info@dehatech.com

**W :** www.dehatech.com

**T :** +90 212 252 48 00

## ▶ Kartepe Factories

**A :** Arslanbey Mahallesi, Yeşilevler Sokak,  
No:5, Pk:41285, Kartepe / KOCAELİ / TR

**A :** Arslanbey OSB Mahallesi, 3. Sokak,  
No:12, Pk:41285, Kartepe / KOCAELİ / TR

## ▶ Gebze Factory

**A :** Barış, Koşuyolu Cd. No:23, Pk: 41400  
Gebze/Kocaeli



Genius Solutions For Industrial Projects



THANK YOU

[www.dehatech.com](http://www.dehatech.com)