

CEMENT & MINING INDUSTRY

www.dehatech.com



Designed to last, our easy-to-install and maintain material handling solutions serve both the Cement and Mining Industries.

ABOUT DEHA TECH

Deha Tech is an International acting EPC (Engineering, Procurement and Construction) Company committed to obtain the highest standard of client satisfaction and providing long-term business relations with its clients. Since 2009 we're proud to have completed more than 100 projects and work every day to be a global partner with the promise of excellence.

+ We offer services in the fields of design & engineering,
+ procurement & logistic, fabrication, construction, and
+ commissioning for various industries

Deha Tech is always improving its know-how, rich human resources and capacity. Making use of its values and capabilities today, Deha Tech has turned into a leading international EPC contractor.

On behalf of the company's board of directors, executives, employees, and subsidiaries, we would like to thank all our clients, partners, business allies to rely on us and support our business all along.





CEMENT & MINING INDUSTRY



FUEL, OIL & GAS INDUSTRY



ENERGY SECTOR



WAEZ (ZINC RECOVERY) TECHNOLOGY



CONSTRUCTION & CIVIL WORKS



MAIN BUSINESS AREAS



CEMENT & MINING INDUSTRY

Clinker Production Plant, Gypsum Production Plant, Cement Grinding Plant, Coal Grinding Plant, Process and Non-Process Equipment, Waelz Plant, Zinc Plant



WAE LZ (ZINC RECOVERY) TECHNOLOGY

Process Design, Rotary Kiln, Settling Chamber, Product Collecting Filter, Gas Treatment Filter, Material Transportation and Electric & Automation



REFINERY, OIL AND GAS INDUSTRY

Liquid Fuel Storage Systems, LNG – LPG Facilities, Onshore/ Downstream, Topping Plant, Asphalt Production Plant, Air Separation Units.



ENERGY SECTOR

Thermal Power Plants, Renewable Power Plants, Electric Substation, High Voltage Transmission Line



CONSTRUCTION & CIVIL WORKS

Civil and Steel Construction, Industrial Buildings, Process and Non-Process Infrastructure and Superstructure

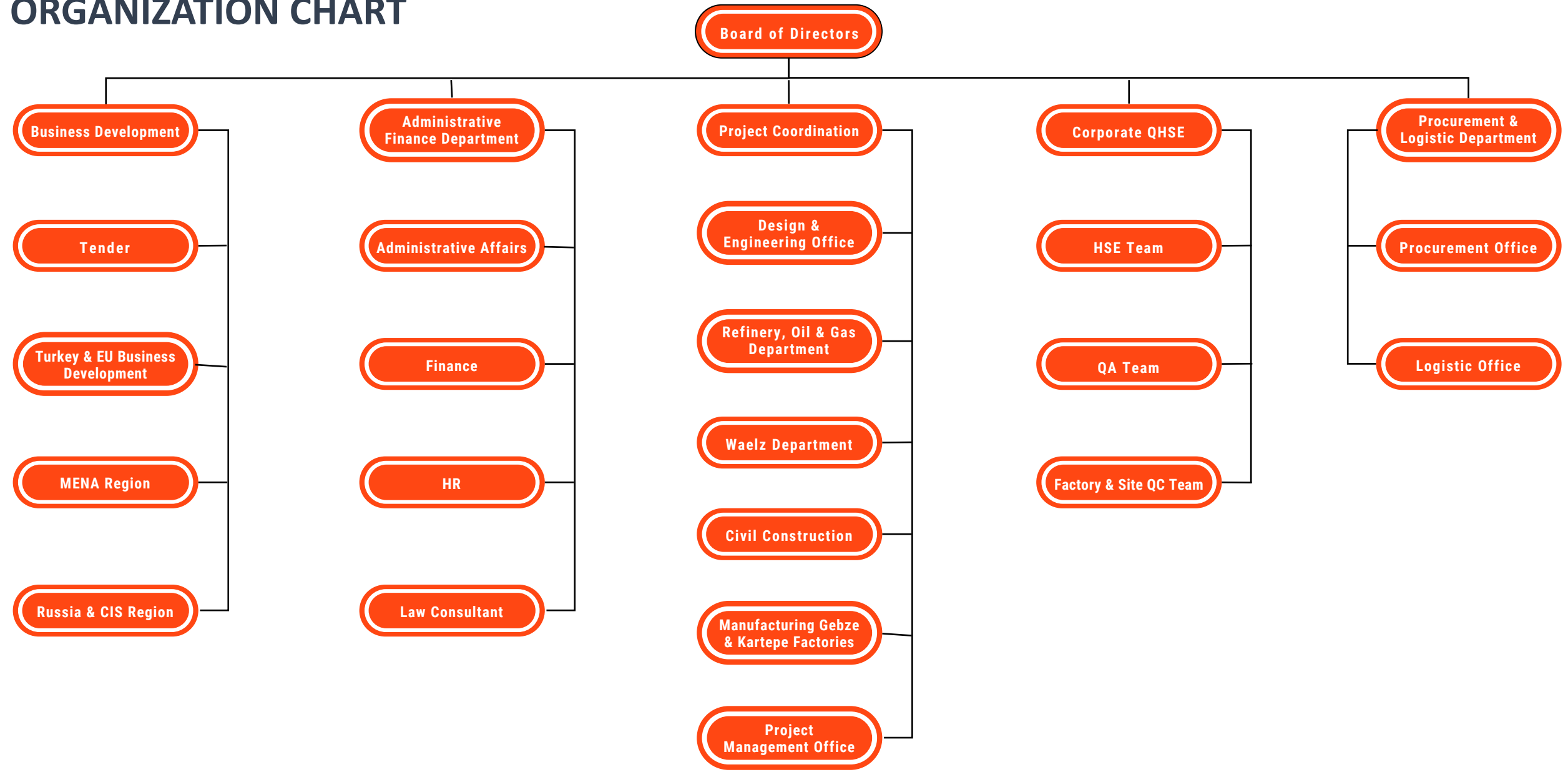


FABRICATION

Tanks, Pressure Vessels, Rotary Kiln and Dryer, Cement Plant Equipment, Steel Structure, Conveying and Material Handling Systems, Plate Works, Silo / Bunkers, Water/Wastewater Treatment Equipment, DeNOx/DeSOx Systems, Dedusting Filters and Systems.



ORGANIZATION CHART

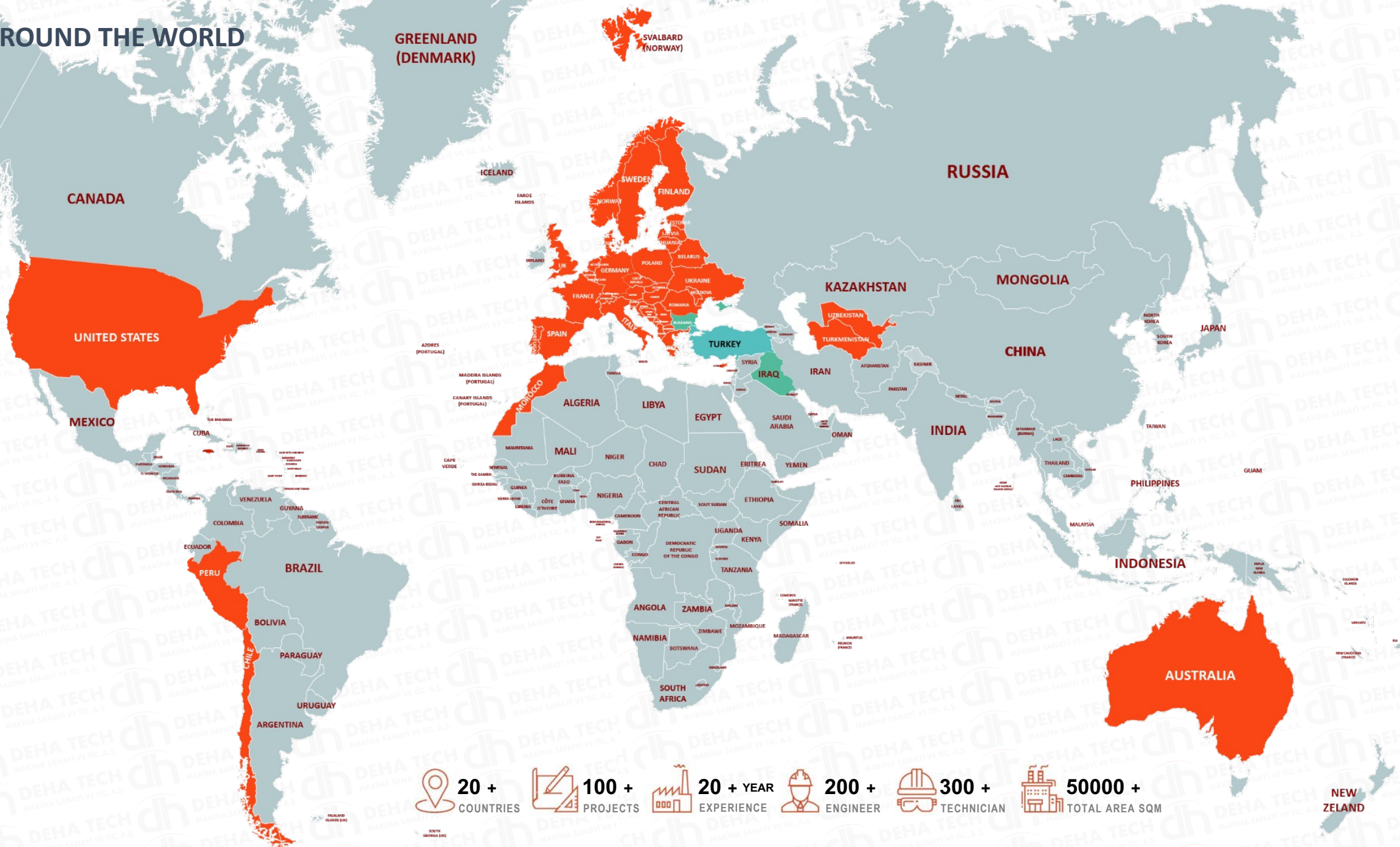


COMPANY PROFILE

DEHA TECH AROUND THE WORLD

- Central Office**
- Turkey
- Branch Offices**
- Bulgaria
- Iraq
- Uzbekistan
- Projects**

- Turkey
- Italy
- Spain
- Finland
- Iraq
- Bulgaria
- United Kingdom
- France
- Germany
- United States
- Peru
- Uzbekistan
- Turkmenistan
- Morocco
- Cyprus
- Jamaica
- Switzerland
- Australia
- Chile
- Norway



- 20 +**
COUNTRIES
- 100 +**
PROJECTS
- 20 + YEAR**
EXPERIENCE
- 200 +**
ENGINEER
- 300 +**
TECHNICIAN
- 50000 +**
TOTAL AREA SQM

QUALITY POLICY

Deha Tech minimizes accidents by preventing the possibility of an accident at its source during all of its activities and makes an effort to prevent occupational diseases.

Deha Tech provides consultancy and participation to OHS activities with the awareness that all subcontractors, visitors and employees are responsible for their own safety in order to achieve the targets for occupational health and safety of all employees.

Seeing as the most important priority of applicable Occupational Health & Safety Legislation and to comply with the terms of Membership Organizations, Hazard & Risk assessment, identifying existing hazards and risks and to provide possible protection, activities and products are brought into an integral commitment, work environment and occupational Health & Continuous improvement in safety practices adopted as policy.

Deha Tech provides customer satisfaction with Quality, Price and On-time Delivery. Quality is the first principle of DEHA TECH. Our Quality System is certified in under the requirements of EN ISO 9001 standard.



ENVIRONMENTAL POLICY

Deha Tech works in an environmentally and friendly way without harming the environment with its works and manufacturing methods in its sector and activity fields.

Deha Tech is aware of its responsibilities regarding the efficient use of the limited resources of the environment and the earth we live in.

We adopt to be respectful to the environment in its activities and comply with the legal regulations regarding the environment.



Rights / Responsibility / Aim

As Deha Tech, we believe and follow all that social responsibility projects are part of the criteria of sustainability.

SOCIAL RESPONSIBILITY

As part of its sustainability approach, Deha Tech has planned its studies on **Education**, Art, Nature and **Environment**, Employment, of Women and Youth, Animal Rights and will share it in the near future



ITU Races sponsored by Deha Tech

WE'RE PROUD OF OUR SAFETY, INTEGRITY, TEAMWORK AND EXCELLENCE COMMITMENT

SUSTAINABILITY



The importance of every drop in water management



Collection and classification of waste at source at solid waste management



The contribution of shared decision-making, training and participation in our processes to our productivity principle



Our belief in the contribution of women and youth



We give priority to education with the awareness that there are no limits in personal development.



ITU Races sponsored by Deha Tech

Social Approach



Environment



Management

OCCUPATIONAL HEALTH AND SAFETY

Our priority is to maintain the health and safety of our employees and public, to minimise the environmental impact associated with our activities.

Working at Deha Tech means becoming a part of energetic team committed to obtain objectives in international conditions.

We ensure that Deha Tech Group Companies have effective occupational health and safety systems to generate customer confidence and protecting employees.



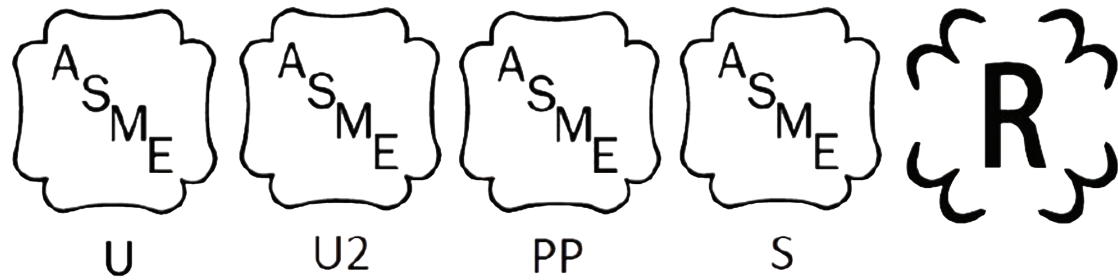
SAFETY FIRST



We ensure that organizations have effective occupational health and safety systems in place to protect employees

- ★ Think Safe
- ★ Act Safe
- ★ Stay Safe

OUR CERTIFICATES











EXC - 4 CERTIFICATED



BUSINESS PARTNERS



DEHA TECH has comprehensive technologies like feasibility study, designing, manufacturing, procurement, construction, test-running, running, maintenance of a CEMENT Plant as well as manufacturing machinery for the plant.

Deha Tech provides following activities for Cement and Grinding Plants Project according to customer needs.

The design, manufacturing and supply of the system and technological equipment are a part of our scope:

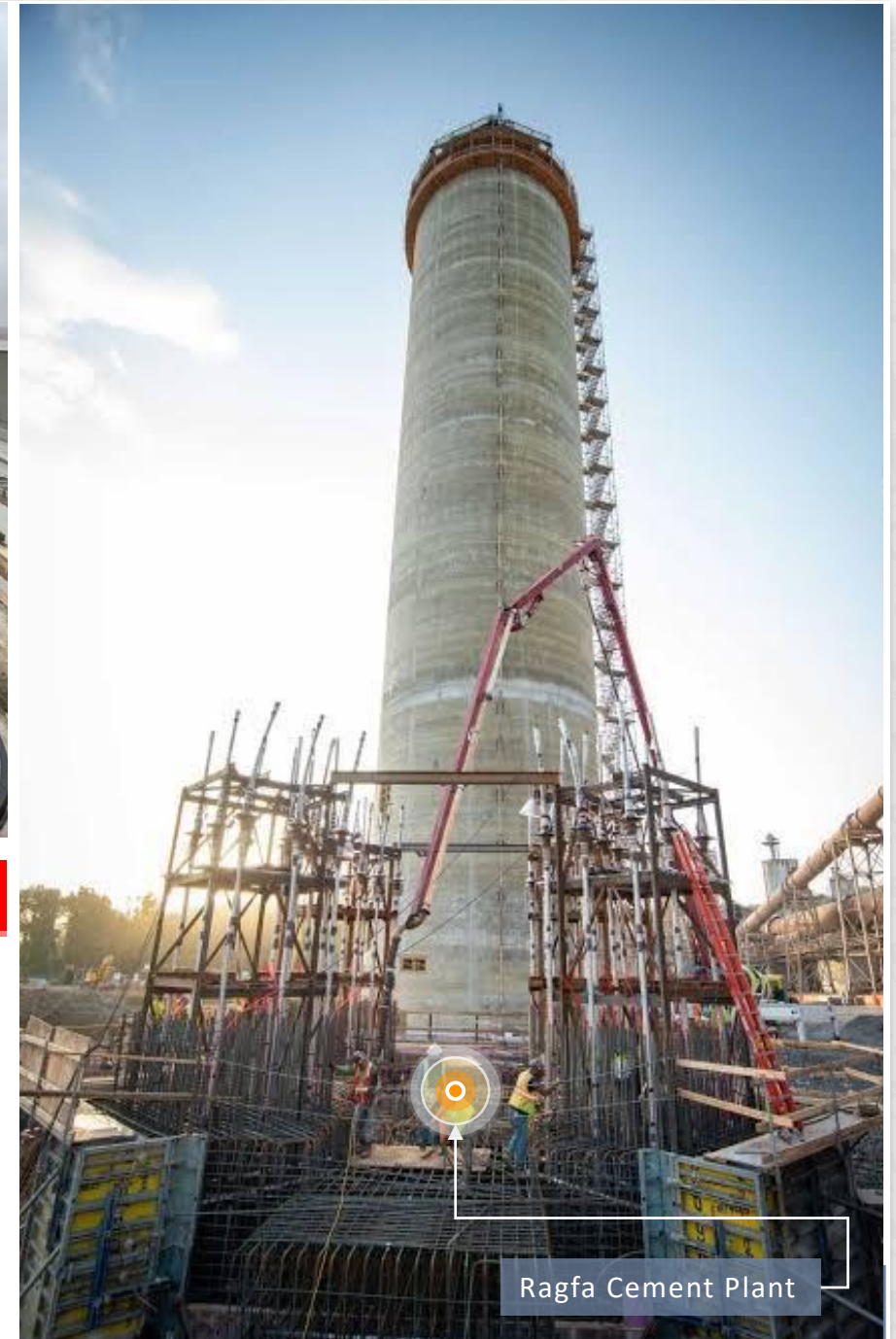
- Complete Clinker Production Plant
- Complete Cement Grinding Plant
- Complete Coal Grinding Plant
- Raw Material Crusher
- Storage Systems
- Preheater / Clinker Cooler
- Turn-key Rotary Kiln & Dryer
- Vertical and Ball Mill
- Dynamic Classifier /Thrust Roller
- V-Separator / Girth & Pinion Gears
- Conveying and Elevator Systems
- Rotary Kiln Tyre & Rollers



Construction and Erection Works

Deha Tech Group Company supplies erection services for Civil, Mechanical, Electric & Automation erection services by qualified erection team. Erection works are executed under the safety and regulated working conditions of each country.

During erection period, necessary tests, norms and standard are applied to full fill work completion in proper installation.



Ragfa Cement Plant

MAIN EQUIPMENT AND MACHINERY

Vertical Roller Mill	Belt Conveyors and Supporting Frames	Bins, Hoppers or Bunker
Rotary Kiln Shell Manufacturing	Bucket Elevators Casings and Buckets	Preheater Cyclones
Clinker Cooler Main Frame	Air Slides	Dedusting Cyclones
Dynamic Separator	Screw, Chain and Drag Chain Conveyors	Process Gas Ducts
Process Bag Filter	Rotary Feeders	Process Chimneys
Electrostatic Precipitators etc.	Diverter Gates and Pendulum Flaps	Chutes and Spillage Box

CEMENT AND MINERAL INDUSTRY MAJOR REFERENCES

Project Name	Project Description	Year	Client	Country	Status
Navoi Clinker Production Line	5500 TPD EPC Clinker Line	2020	Navoi Cement	Uzbekistan	Ongoing
Tashkent Grinding Plant	100 TPH EPC Cement Grinding Plant	2020	Tashkent Cement	Uzbekistan	Ongoing
Alabama Ragfa Cement Plant Project	5000 TPD Fabrication of All Machinery	2020	Thyssenkrupp	USA	Ongoing
Bulgaria Zinc Recovery Plant	EPC Zinc Recovery Plant	2020	Harmonee	Bulgaria	Ongoing
Befesa Zinc Recovery Plant	EPC Pyro Process of Zinc Recovery Plant	2018	Sartech	Turkey	Completed
Cimentas Kars Cement Factory Filter Conversion	Kiln Bag Filter Conversation Brand New Clinker Cooler, Heat Exchanger and Bag Filter	2013	CTP	Turkey	Completed
EPC Zinc Recycling Project	EPC Zinc Recovery Plant	2012	Marzinc	Turkey	Completed



CEMENT PLANT 5500 TPD / UZBEKISTAN / NAVOI

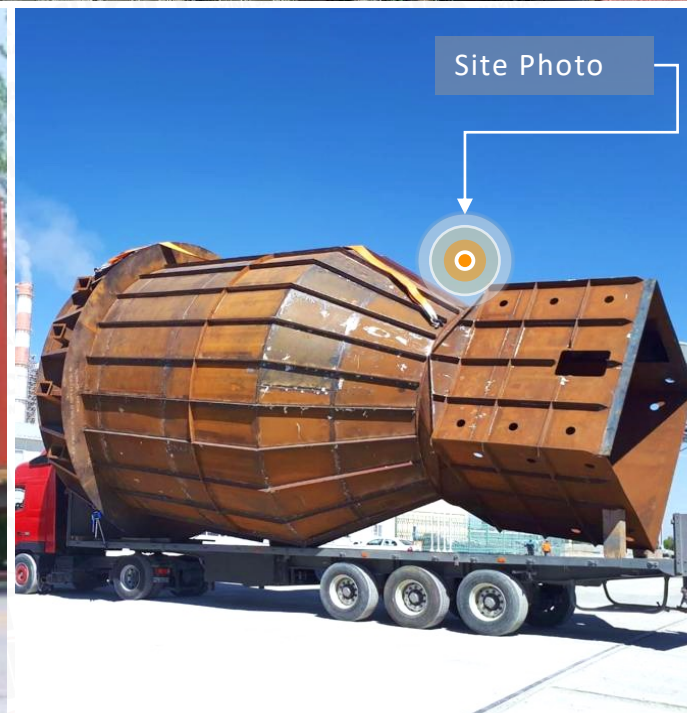
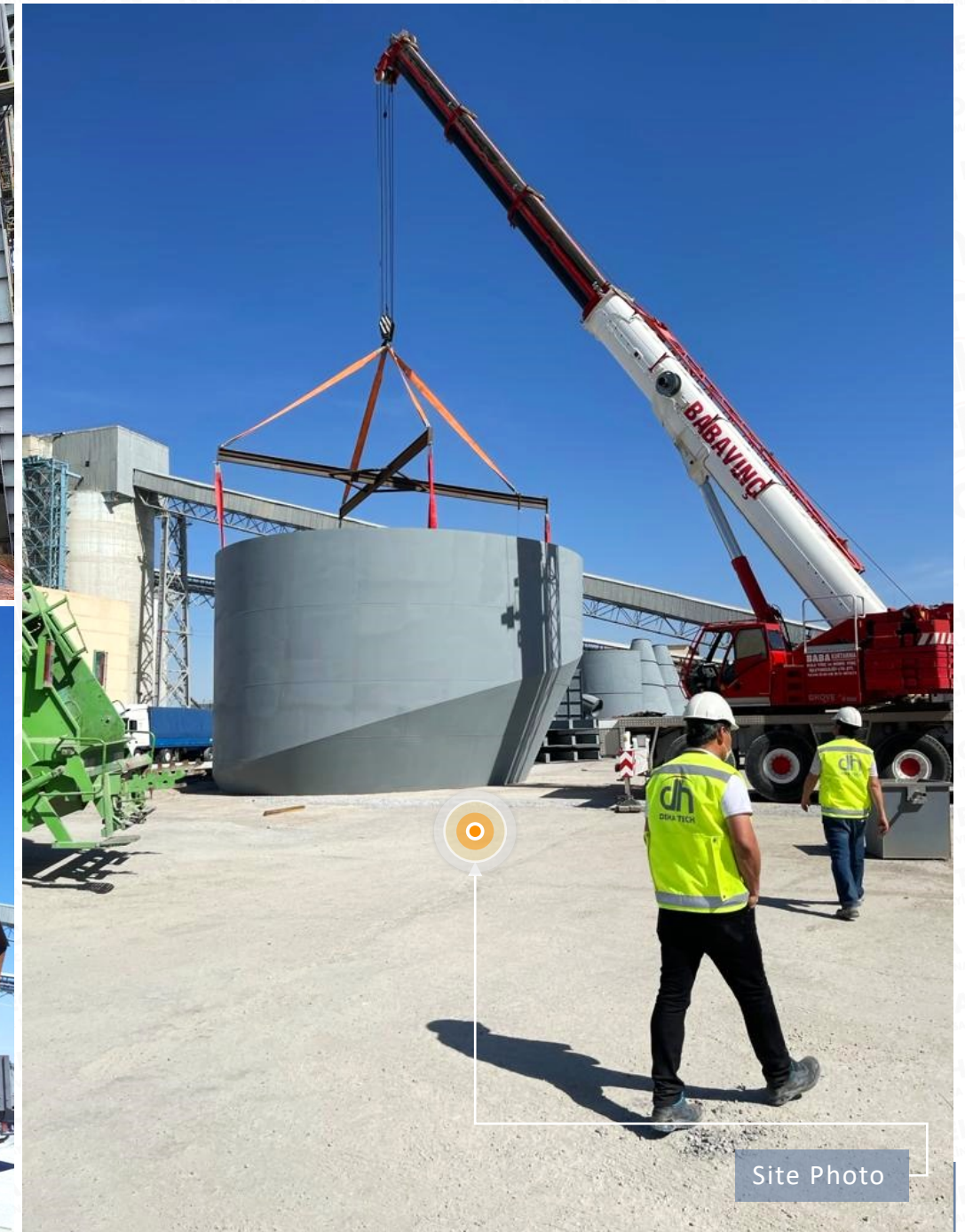


Cement Plant Clinker Line



Uzbekistan Cement Plant

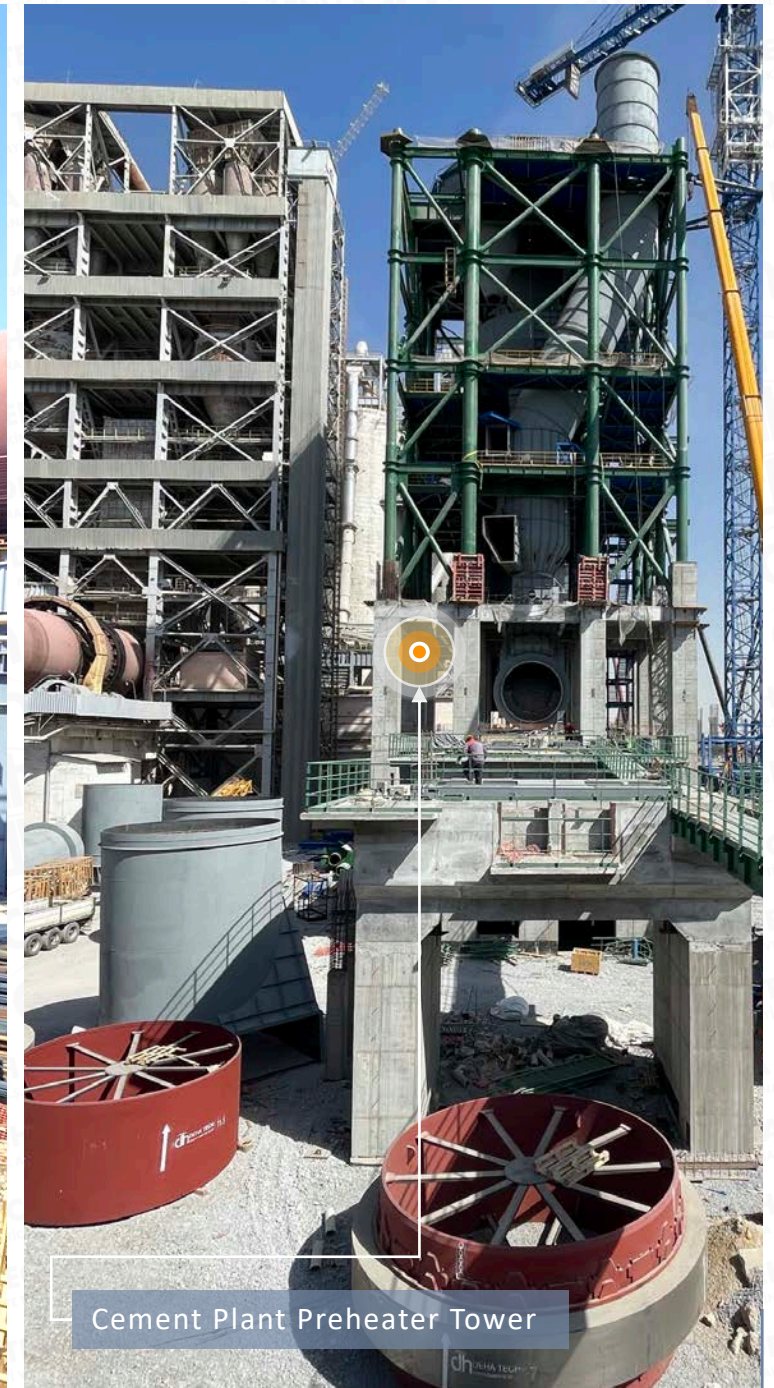
CEMENT PLANT 5500 TPD / UZBEKISTAN / NAVOI



CEMENT PLANT 5500 TPD / UZBEKISTAN / NAVOI



Cement Plant Clinker Line



Cement Plant Preheater Tower

CEMENT PLANT 5500 TPD / UZBEKISTAN / NAVOI



Scope

Fabrication, Site Erection & Commissioning of 300.000 m3 Kiln Bag Filter & 150.000 m3 Clinker Cooler

Kiln Bag Filter

Clinker Cooler Bag Filter with Casing

Plenum, Hoppers, Gates & Flaps

Tube Type Heat Exchanger

2 Radial Fans

2 Stacks & Flue Gas Ducts

Conveying System

Structural Steel

Uzbekistan Cement Plant Overview

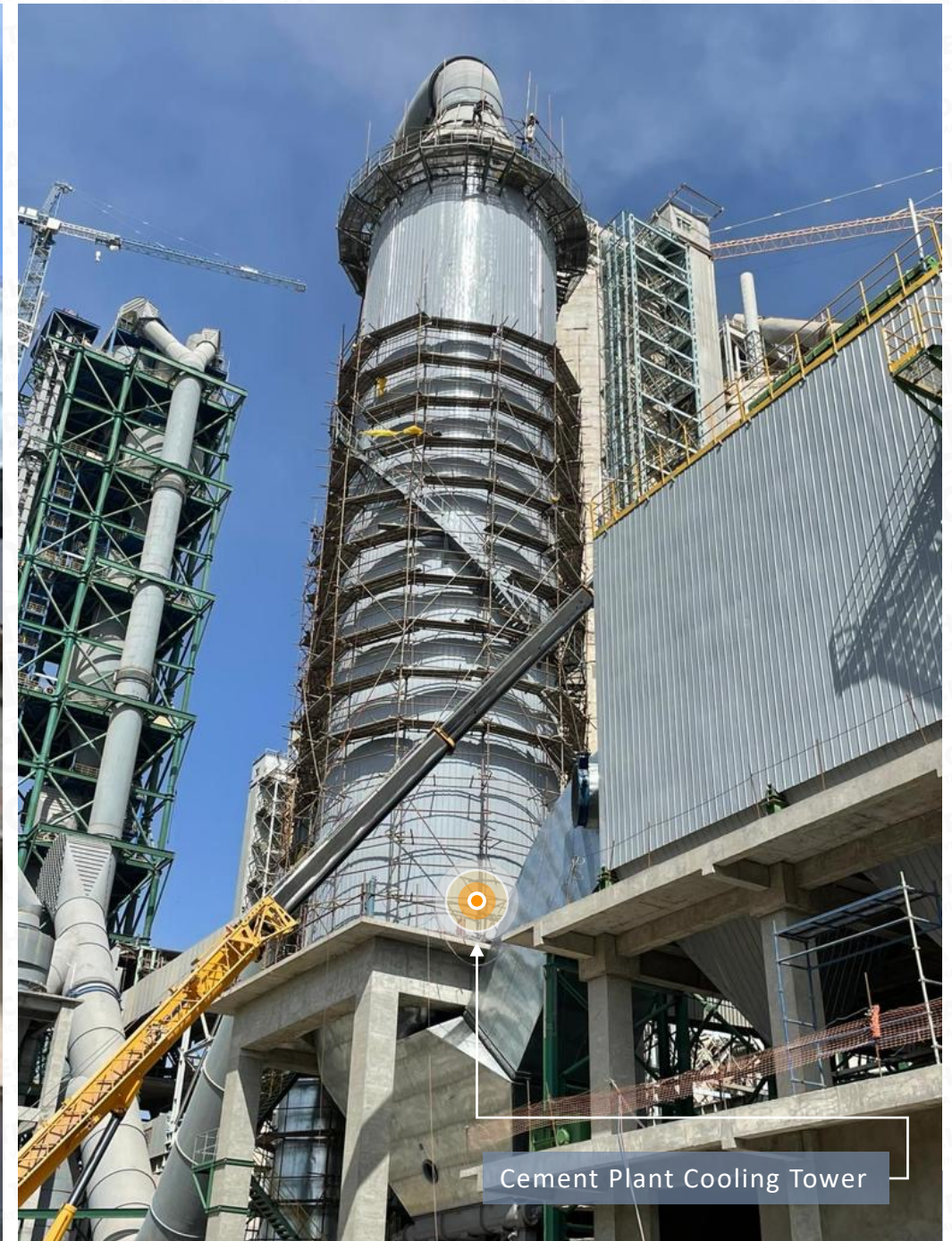


Cement Plant Cooling Tower

CEMENT PLANT 5500 TPD / UZBEKISTAN / NAVOI



Uzbekistan Cement Plant Overview



Cement Plant Cooling Tower

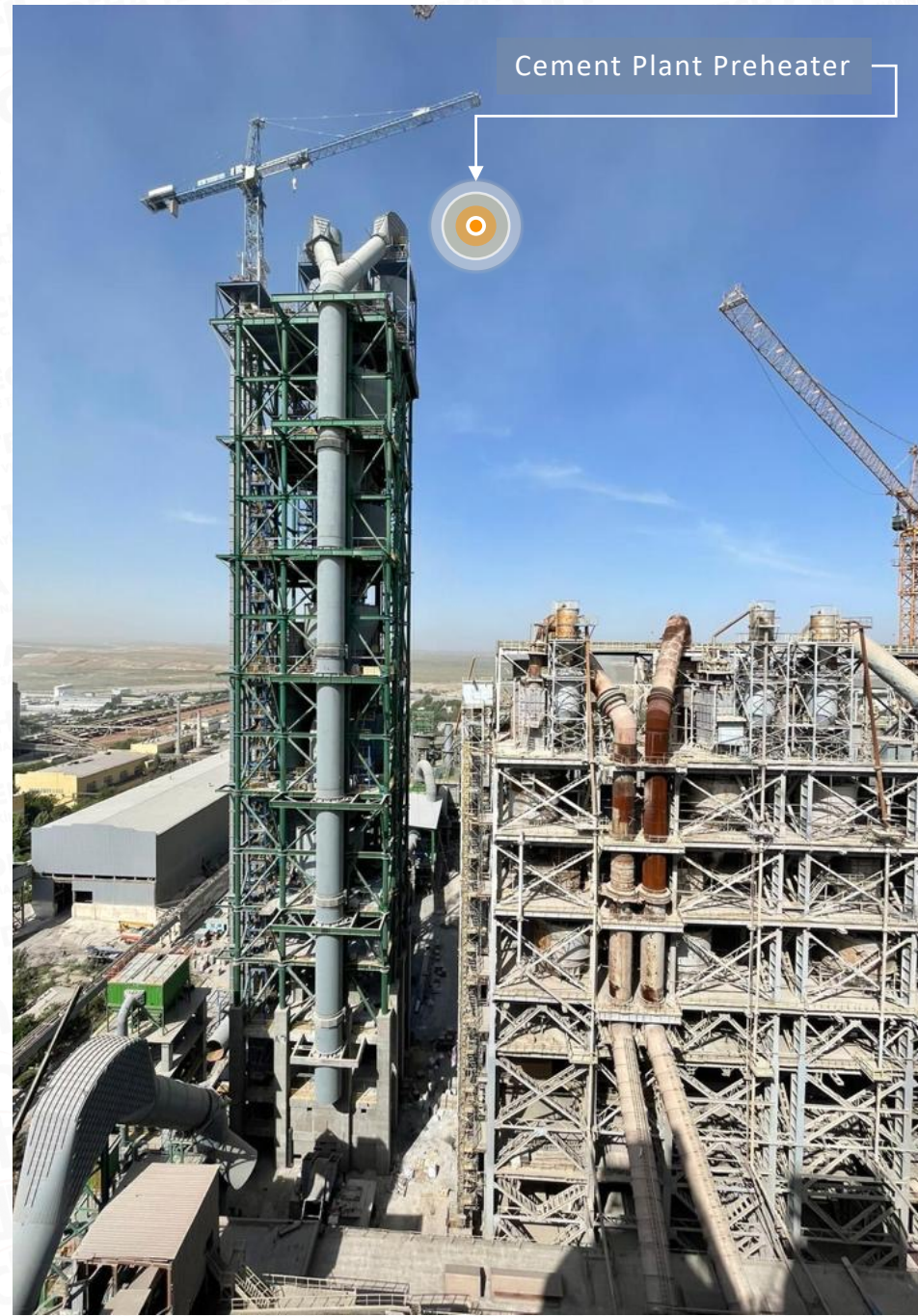


Uzbekistan Cement Plant Overview

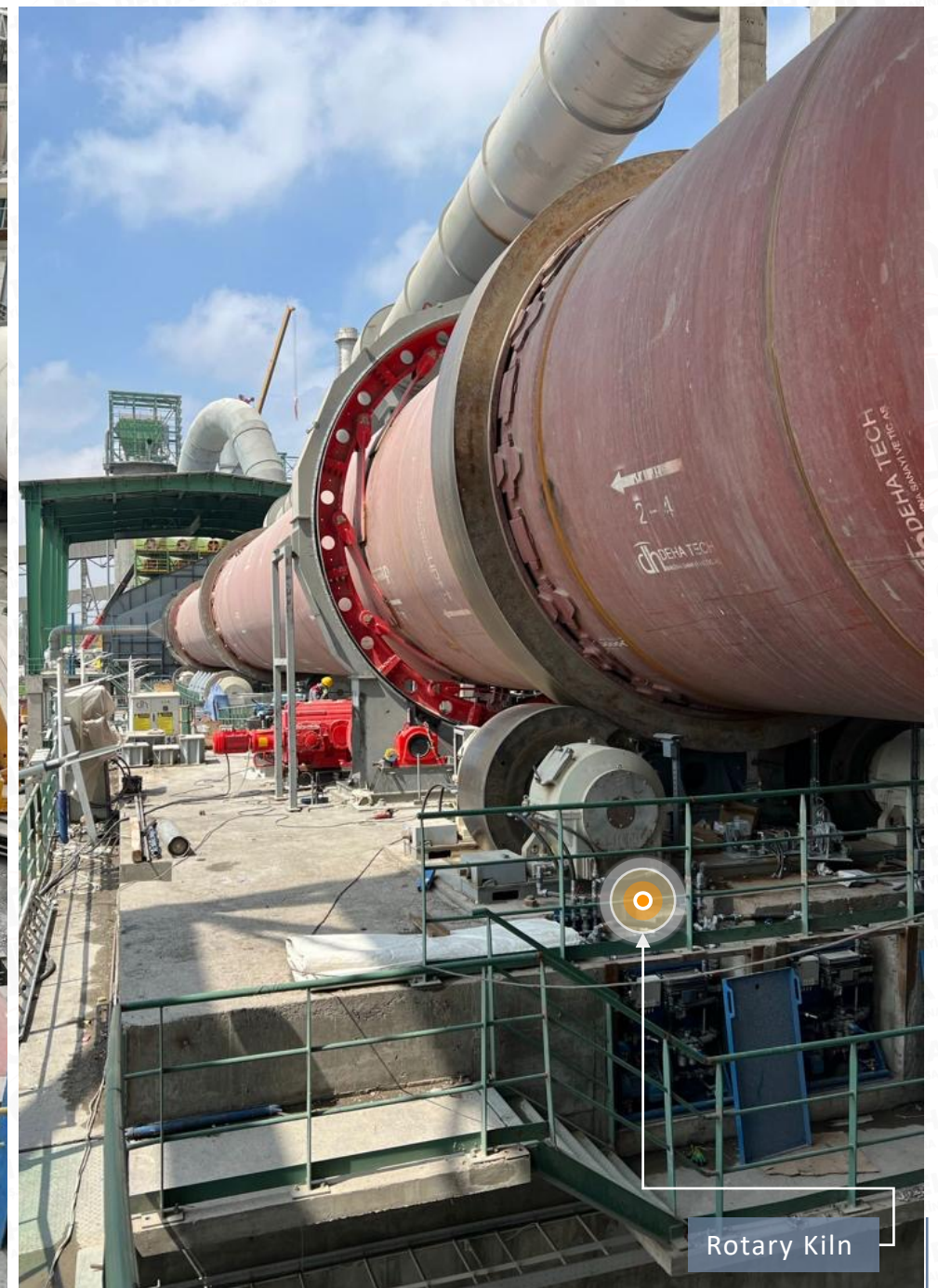


Cement Plant Cooling Filter

CEMENT PLANT 5500 TPD / UZBEKISTAN / NAVOI



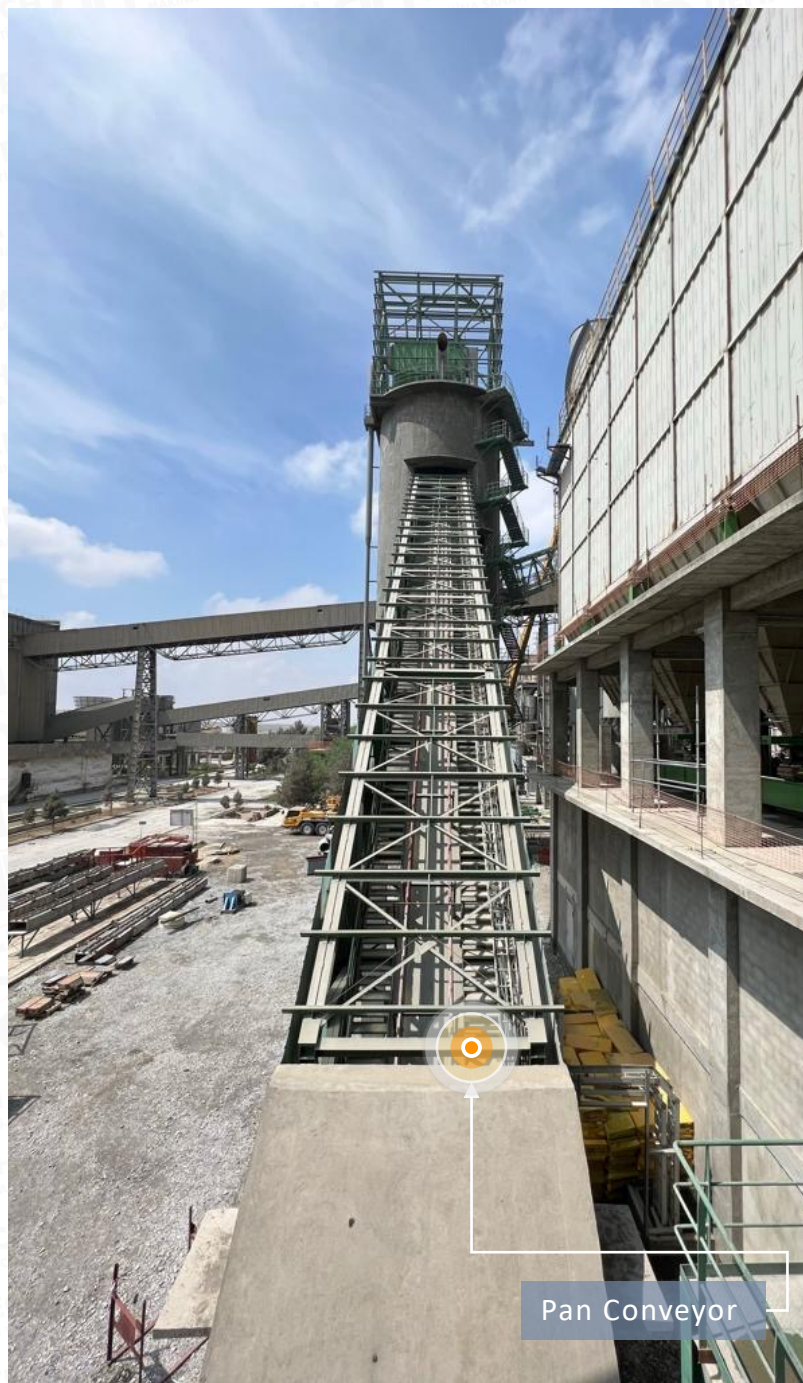
CEMENT PLANT 5500 TPD / UZBEKISTAN / NAVOI



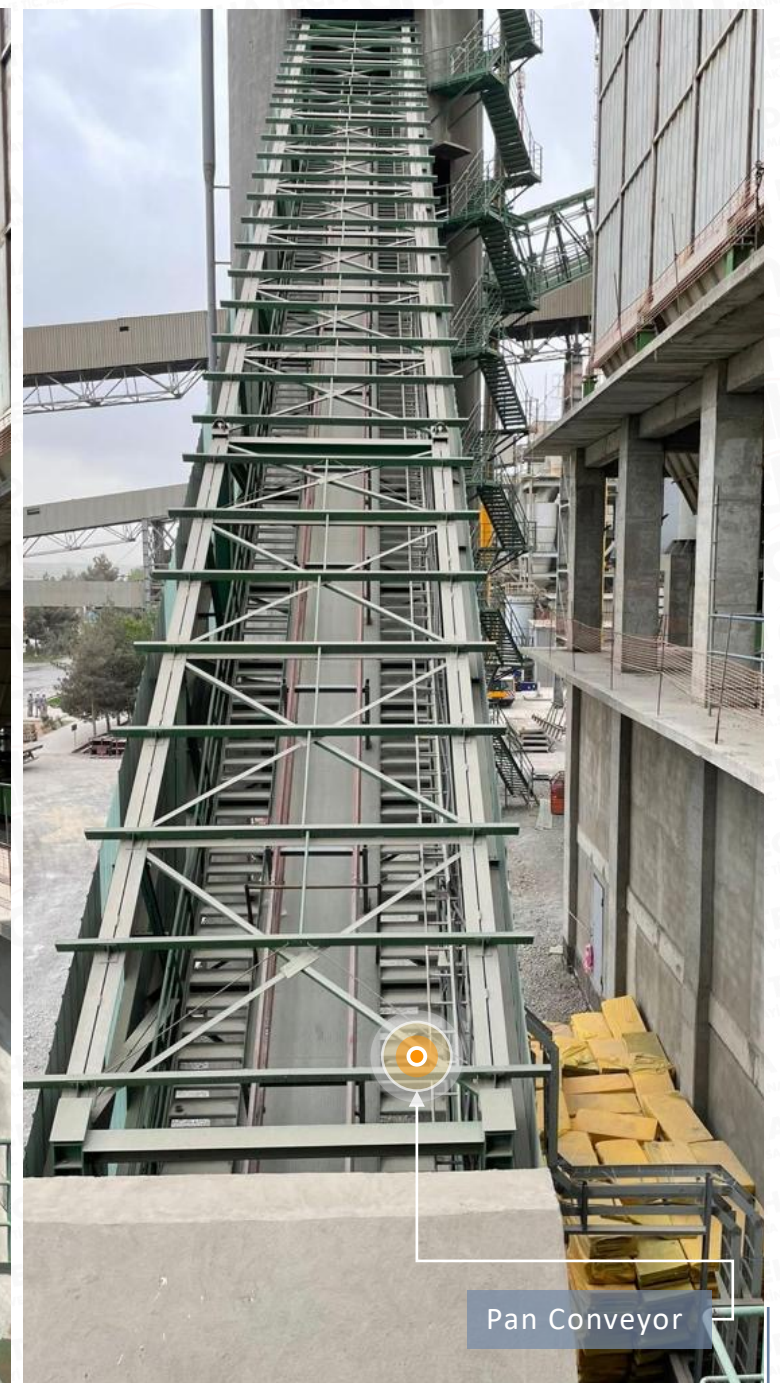
CEMENT PLANT 5500 TPD / UZBEKISTAN / NAVOI



Clinker Silo



Pan Conveyor



Pan Conveyor

TASHKENT CEMENT PLANT GRINDING STATION PROJECT

Cement Silo



Tashkent Cement Grinding Plant

Engineering

Construction

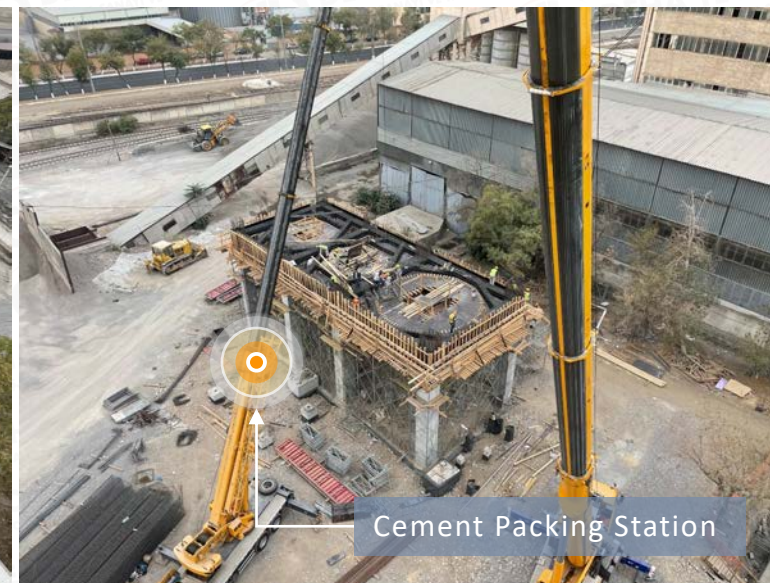
Procurement

Capacity 100 TPH

Cement Mill



Cement Packing Station



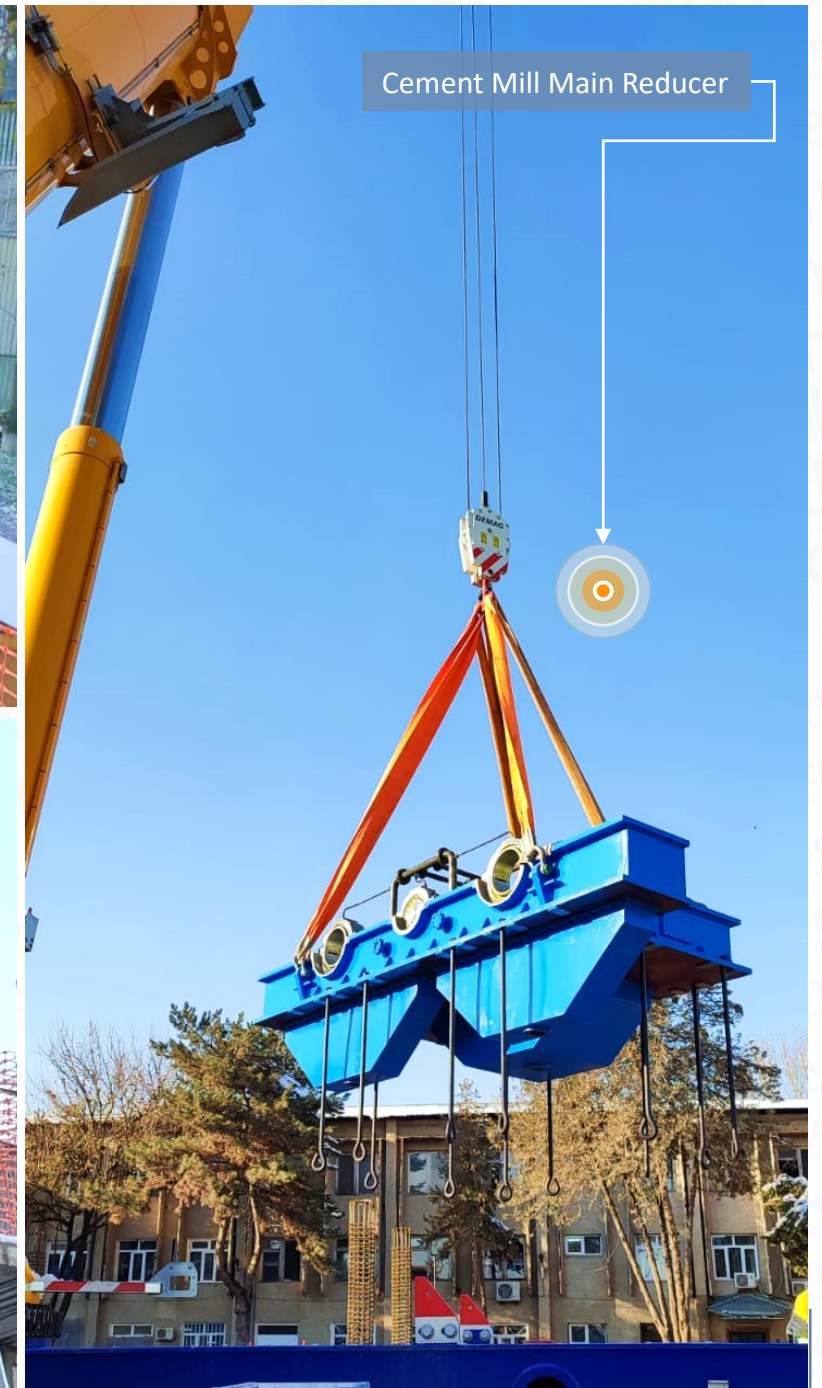
Wagon Unloading Unit Foundation Rebar Fixing



TASHKENT CEMENT PLANT GRINDING STATION PROJECT



TASHKENT CEMENT PLANT GRINDING STATION PROJECT



TASHKENT CEMENT PLANT GRINDING STATION PROJECT



Tashkent Cement Silos General View

TASHKENT CEMENT PLANT GRINDING STATION PROJECT



Tashkent 100TPH Cement Grinding And Packing Station General View

Scope

Fabrication, Site Erection & Commissioning of 300.000 m³ Kiln Bag Filter & 150.000 m³ Clinker Cooler

Kiln Bag Filter

Clinker Cooler Bag Filter with Casing Plenum, Hoppers, Gates & Flaps

Tube Type Heat Exchanger

2 Radial Fans

2 Stacks & Flue Gas Ducts

Conveying System

Structural Steel



Kars Cement Plant Overview



Kars Cement Plant Structural Steel and Conveying System



Kars Cement Bag Filters



Kars Cement Plant Stacks, Flue Gas Ducts Installation



Kars Cement Overview



Kars Cement Plant Bag Filters, Flue Gas Ducts

AFYON CEMENT PLANT



Afyon Cement Plant Overview



Afyon Cement Plant Bag Filters Installation



Afyon Cement Plant Filter Conversation



Afyon Cement Plant Piping

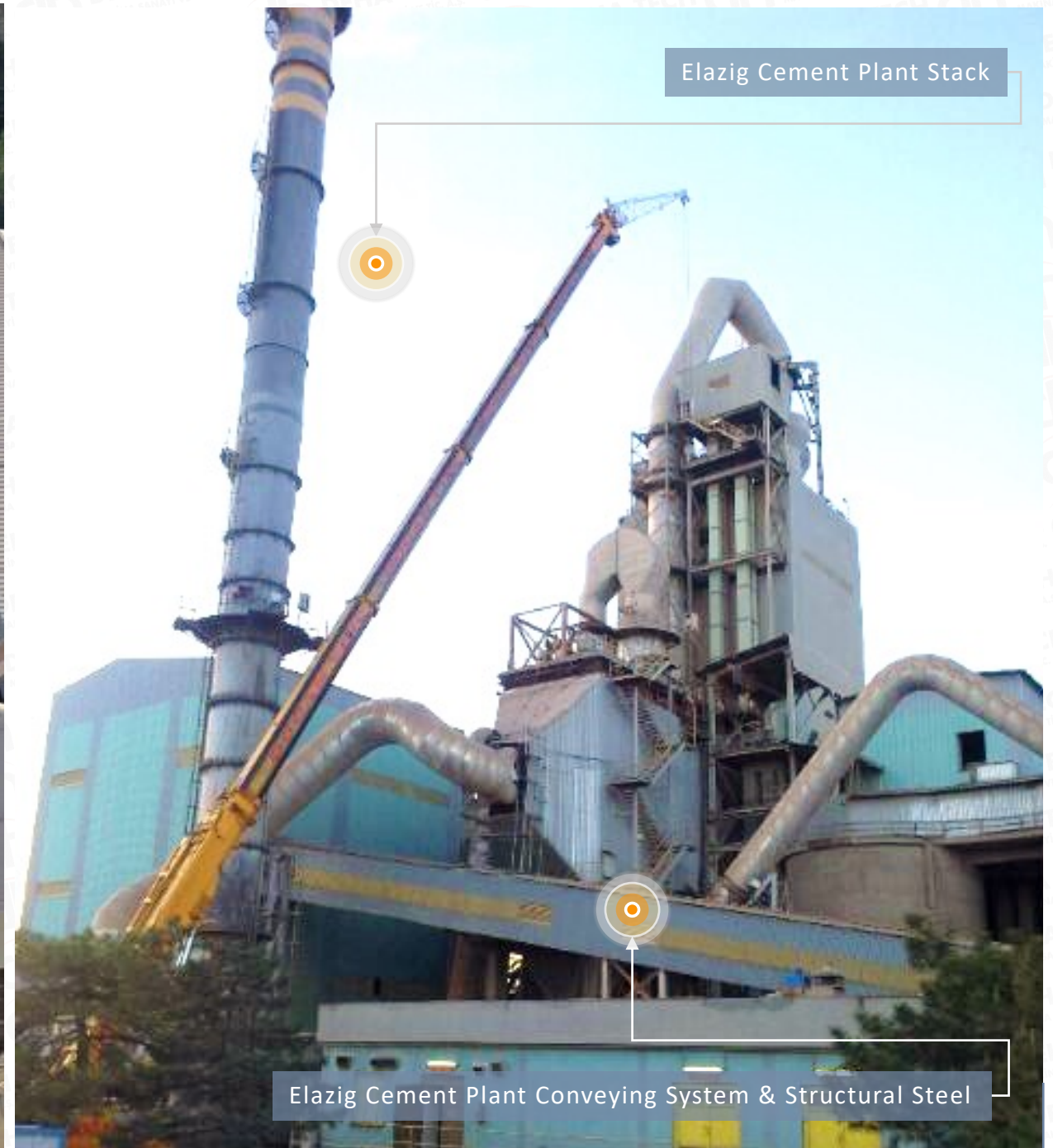


Afyon Cement Plant Ducts

ELAZIG CEMENT PLANT FABRICATION & INSTALLATION



Elazig Cement Plant Fabrication, Installation of Flue Gas Duct, Filter Bags, Hoppers, Gates, Stacks, Radial Fans, Flaps



Elazig Cement Plant Stack

Elazig Cement Plant Conveying System & Structural Steel

ELAZIG CEMENT PLANT FABRICATION & INSTALLATION



Elazig Cement Plant Flue Gas Ducts



Elazig Cement Plant Bag Filters

SONMEZ 5000 TPD CEMENT PLANT

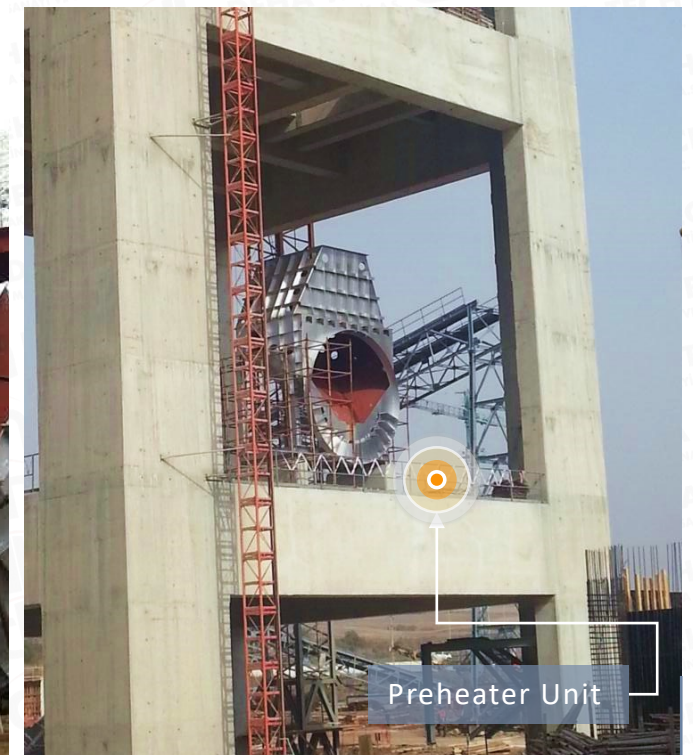


Sonmez 5000 TPD Cement Plant Engineering, Fabrication & Surface Preparation

SONMEZ 5000 TPD CEMENT PLANT



SONMEZ 5000 TPD CEMENT PLANT



Sonmez 5000 TPD Cement Plant Preheater Units

Preheater Unit

RAGFA CEMENT PLANT 5000 TPD EQUIPMENT FABRICATION ALABAMA / USA



Ragfa Cement Plant



Ragfa Cement Plant

RAGFA CEMENT PLANT 5000 TPD EQUIPMENT FABRICATION ALABAMA / USA



ZINC RECOVERY WAE LZ PLANT / BULGARIA



Bulgaria Zinc Recovery Waelz Plant

ZINC RECOVERY WAE LZ PLANT / BULGARIA



Bulgaria Zinc Recovery Waelz Plant

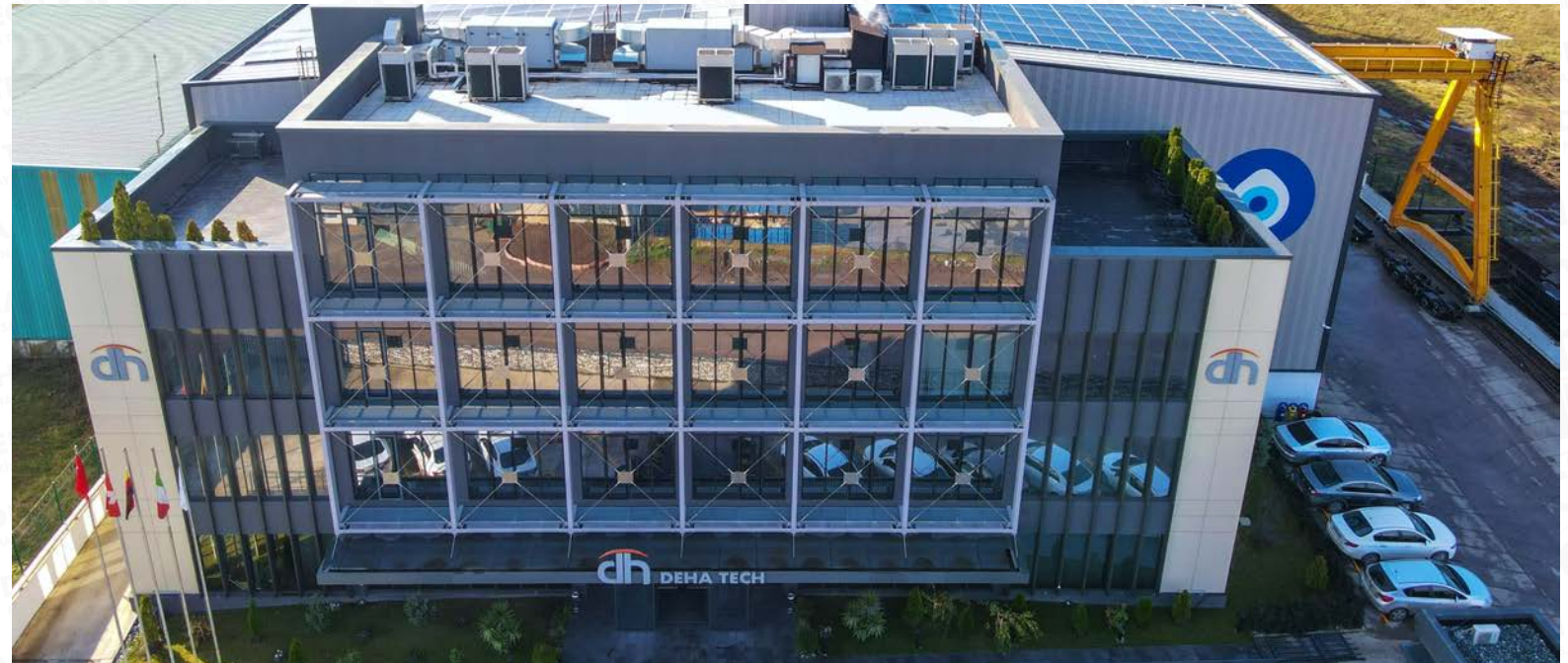
A large group of employees, mostly men wearing yellow hard hats and dark work uniforms with reflective stripes, are posed in several rows in front of a modern building. The building has large glass windows and a prominent logo consisting of the letters 'dh' in a stylized font with an orange arc above it, followed by the text 'DEHA TECH' in large, bold, grey letters. Some employees in the front row are wearing white hard hats and high-visibility yellow safety vests. The scene is set outdoors during the day.

dh DEHA TECH

MANUFACTURING PLANTS

KARTEPE FACTORY 1 PROFILE

Location	Kartepe	Status	Active
Open Area	18.000 m ²	Closed Area	10.000 m ²
Production Capacity	4.800 t	Personnel	150
Main Equipment	<p>1500 mm x 300 mm Hydraulic Press 300 t HPK 100 Profile and Pipe Rolling Machine MIG / MAG Welding Machines TIG Welding Machines Aluminium Welding Machines Submerged Arc Welding Machines Sleeve Welding Machine Electric Welding Machine Screw Lathe Weighing Machine 150 t Band Saw Cutting Machine, D 1000 mm Radial Drill + Threading, Hole D 50 mm 3 x 4 Rolls Hydraulic Plate Bending Machine Up to 80 mm x 3000 mm Bending Capacity Up to 12 mm x 3000 mm Bending Capacity Up to 60 mm x 3000 mm Bending Capacity</p>		
Crane Capacity	<p>8 x 30 t Overhead Cranes x (h) 9.5 m 1 x 20 t Portal Crane x (h) 9.5 m 2 x 25 t Portal Cranes x (h) 9.5 m 1 x 30 t Portal Crane x (h) 9.5 m 1 x 15 t Portal Crane x (h) 9.5 m</p>		



KARTEPE FACTORY 2 PROFILE

Location	Kartepe
Status	Active
Open Area	2.500 m ²
Closed Area	2.500 m ²
Production Capacity	5.000 t
Personnel	40
Main Equipment	3 m x 12 m CNC Plasma + Oksi (Angle Cutting) 2,5 m x 12 m CNC Plasma (Angle Cutting) 12 m Plasma Pipe Cutting Machine Band Saw Cutting Machine Radial Drill + Threading, Hole D 50 mm 7100*600 mm Hydraulic Bending 700 t 1020*150 mm Hydraulic Bending 150 t 4000*440 mm Hydraulic Bending 440 t Screw Lathe Sand Blasting Cabinet & Paint Area CNC Milling Machine Universal Milling Machine Turning Lathe CNC Turning Machine
Crane Capacity	4 x 10 t Crane x (h) 7.3 m



GEBZE FACTORY PROFILE

Location	Gebze
Status	Active
Open Area	1.000 m ²
Closed Area	3.000 m ²
Production Capacity	2.200 t
Personnel	65
Main Equipment	3 m x 12 m CNC Plasma + Oksi (Angle Cutting) Radial Drill + Threading, Hole D 50 mm Band Saw Cutting Machine Screw Lathe 2 x Submerged Arc Welding Machines MIG / MAG Welding Machines TIG Welding Machine Electric Welding Machine 4 Roll 40 mm x 3000 mm Bending Machine Up to 30 mm x 3000 mm Bending Capacity
Crane Capacity	1 x 30 t Overhead Crane x (h) 8 m 2 x 20 t Overhead Crane x (h) 8 m 1 x 10 t Portal Crane x (h) 8 m



HAYDARPASA PORT PROFILE

Location	Haydarpaşa Port
Status	Active
Open Area	50.000 m ²
Closed Area	1.000 m ²
Production Capacity	4.500 Tons
Personnel	230



KARTEPE FACTORY 1 GENERAL VIEW

150 Ton Weighbridge (24m x 3m)

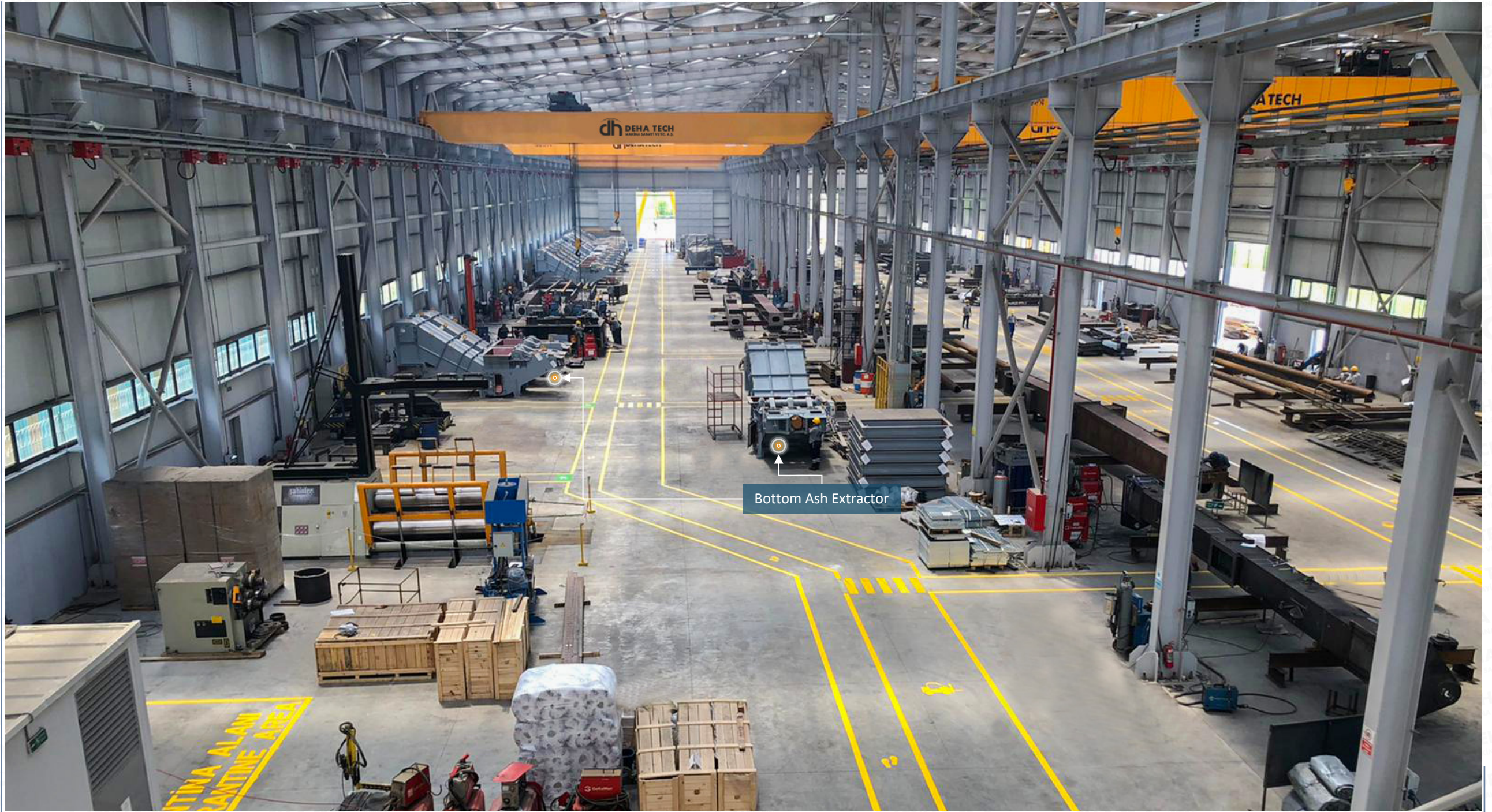
20 Ton Gantry Crane

25 Ton Gantry Cranes

30 + 15 Ton Gantry Crane

Deha Tech continues to provide the highest quality services worldwide at full speed, with a total of 2000 employees, 4 factories and 1 port in a 59000 sqm production area.

DEHA TECH KARTEPE FACTORY INTERIOR VIEW



Bottom Ash Extractor

DEHA TECH KARTEPE FACTORY GENERAL VIEW

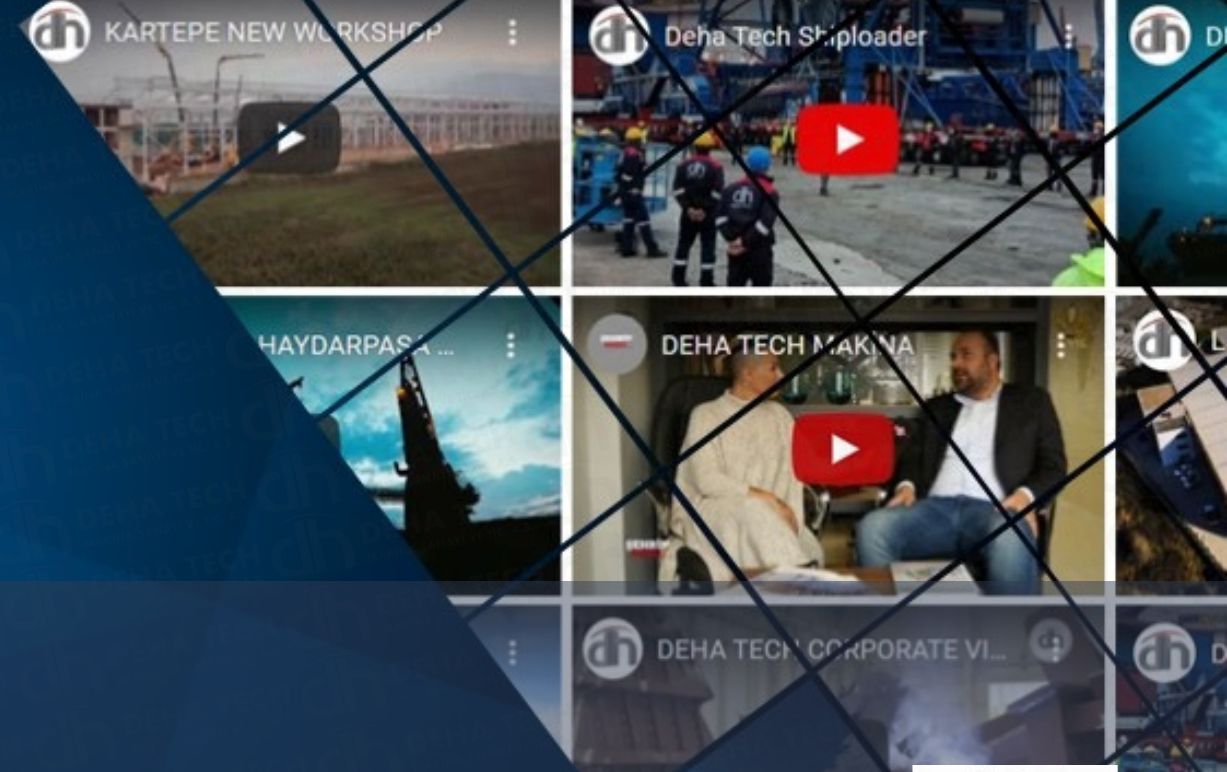


DEHA TECH KARTEPE FACTORY 2

DEHA TECH KARTEPE FACTORY 1

- Fast Response
- Technology Driven Projects
- Sustainable Profitability and Financial Stability

DEHA TECH`S CONTACT DETAILS



www.dehatech.com

▶ Deha Tech Headquarters

A : Kemeraltı Caddesi No:28, Pk:34425,
Müeyyedzade Mahallesi, Karaköy /
İSTANBUL / TR

W : info@dehatech.com

W : www.dehatech.com

T : +90 212 252 48 00

▶ Kartepe Factories

A : Arslanbey Mahallesi, Yeşilevler Sokak,
No:5, Pk:41285, Kartepe / KOCAELİ / TR

A : Arslanbey OSB Mahallesi, 3. Sokak,
No:12, Pk:41285, Kartepe / KOCAELİ / TR

▶ Gebze Factory

A : Barış, Koşuyolu Cd. No:23, Pk: 41400
Gebze/Kocaeli



Genius Solutions For Industrial Projects



THANK YOU