

CONSTRUCTION AND CIVIL WORKS



ABOUT DEHA TECH

Deha Tech is an International acting EPC (Engineering, Procurement and Construction) Company committed to obtain the highest standard of client satisfaction and providing long-term business relations with its clients. Since 2009 we're proud to have completed more than 100 projects and work every day to be a global partner with the promise of excellence.

+ We offer services in the fields of design & engineering,
+ procurement & logistic, fabrication, construction, and
+ commissioning for various industries

Deha Tech is always improving its know-how, rich human resources and capacity. Making use of its values and capabilities today, Deha Tech has turned into a leading international EPC contractor.

On behalf of the company's board of directors, executives, employees, and subsidiaries, we would like to thank all our clients, partners, business allies to rely on us and support our business all along.





CEMENT & MINING INDUSTRY



FUEL, OIL & GAS INDUSTRY



ENERGY SECTOR



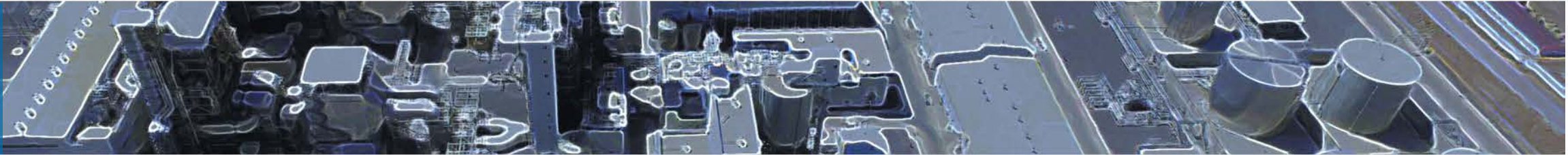
WALZ (ZINC RECOVERY) TECHNOLOGY



CONSTRUCTION & CIVIL WORKS



MAIN BUSINESS AREAS



CEMENT & MINING INDUSTRY

Clinker Production Plant, Gypsum Production Plant, Cement Grinding Plant, Coal Grinding Plant, Process and Non-Process Equipment, Waelz Plant, Zinc Plant



WAE LZ (ZINC RECOVERY) TECHNOLOGY

Process Design, Rotary Kiln, Settling Chamber, Product Collecting Filter, Gas Treatment Filter, Material Transportation and Electric & Automation



REFINERY, OIL AND GAS INDUSTRY

Liquid Fuel Storage Systems, LNG – LPG Facilities, Onshore/ Downstream, Topping Plant, Asphalt Production Plant, Air Separation Units.



ENERGY SECTOR

Thermal Power Plants, Renewable Power Plants, Electric Substation, High Voltage Transmission Line



CONSTRUCTION & CIVIL WORKS

Civil and Steel Construction, Industrial Buildings, Process and Non-Process Infrastructure and Superstructure

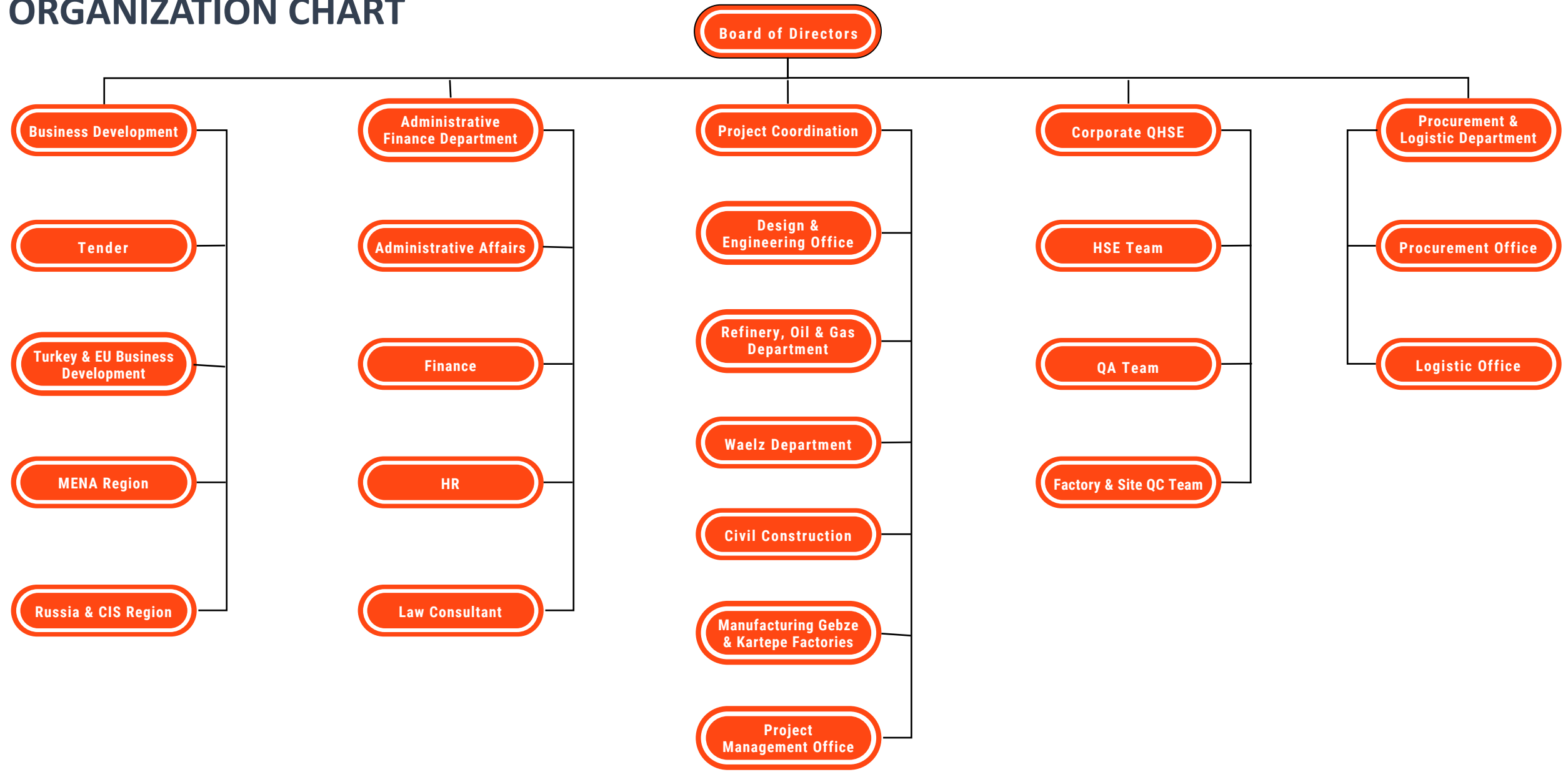


FABRICATION

Tanks, Pressure Vessels, Rotary Kiln and Dryer, Cement Plant Equipment, Steel Structure, Conveying and Material Handling Systems, Plate Works, Silo / Bunkers, Water/Wastewater Treatment Equipment, DeNOx/DeSOx Systems, Dedusting Filters and Systems.



ORGANIZATION CHART



COMPANY PROFILE

DEHA TECH AROUND THE WORLD

Central Office

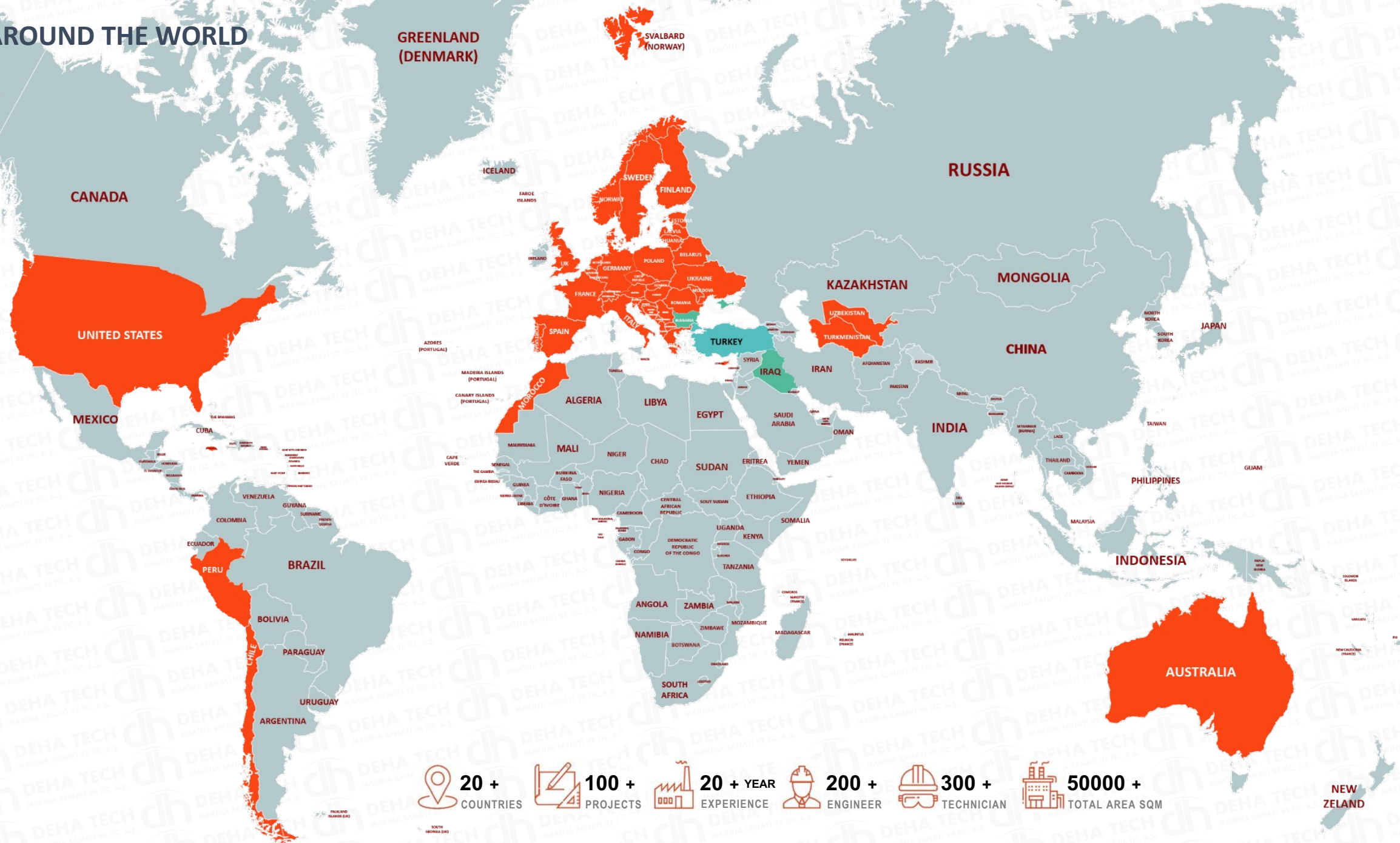
Turkey

Branch Offices

Bulgaria
Iraq
Uzbekistan

Projects

Turkey
Italy
Spain
Finland
Iraq
Bulgaria
United Kingdom
France
United States
Peru
Uzbekistan
Turkmenistan
Morocco
Cyprus
Jamaica
Switzerland
Australia
Chile
Norway



20 +
COUNTRIES

100 +
PROJECTS

20 + YEAR
EXPERIENCE

200 +
ENGINEER

300 +
TECHNICIAN

50000 +
TOTAL AREA SQM

QUALITY POLICY

Deha Tech minimizes accidents by preventing the possibility of an accident at its source during all of its activities and makes an effort to prevent occupational diseases.

Deha Tech provides consultancy and participation to OHS activities with the awareness that all subcontractors, visitors and employees are responsible for their own safety in order to achieve the targets for occupational health and safety of all employees.

Seeing as the most important priority of applicable Occupational Health & Safety Legislation and to comply with the terms of Membership Organizations, Hazard & Risk assessment, identifying existing hazards and risks and to provide possible protection, activities and products are brought into an integral commitment, work environment and occupational Health & Continuous improvement in safety practices adopted as policy.

Deha Tech provides customer satisfaction with Quality, Price and On-time Delivery. Quality is the first principle of DEHA TECH. Our Quality System is certified in under the requirements of EN ISO 9001 standard.



ENVIRONMENTAL POLICY

Deha Tech works in an environmentally and friendly way without harming the environment with its works and manufacturing methods in its sector and activity fields.

Deha Tech is aware of its responsibilities regarding the efficient use of the limited resources of the environment and the earth we live in.

We adopt to be respectful to the environment in its activities and comply with the legal regulations regarding the environment.



Rights / Responsibility / Aim

As Deha Tech, we believe and follow all that social responsibility projects are part of the criteria of sustainability.

SOCIAL RESPONSIBILITY

As part of its sustainability approach, Deha Tech has planned its studies on **Education**, Art, Nature and **Environment**, Employment, of Women and Youth, Animal Rights and will share it in the near future



ITU Races sponsored by Deha Tech

WE'RE PROUD OF OUR SAFETY, INTEGRITY, TEAMWORK AND EXCELLENCE COMMITMENT

SUSTAINABILITY



The importance of every drop in water management



Collection and classification of waste at source at solid waste management



The contribution of shared decision-making, training and participation in our processes to our productivity principle



Our belief in the contribution of women and youth



We give priority to education with the awareness that there are no limits in personal development.



Social Approach



Environment



Management

OCCUPATIONAL HEALTH AND SAFETY

Our priority is to maintain the health and safety of our employees and public, to minimise the environmental impact associated with our activities.

Working at Deha Tech means becoming a part of energetic team committed to obtain objectives in international conditions.

We ensure that Deha Tech Group Companies have effective occupational health and safety systems to generate customer confidence and protecting employees.



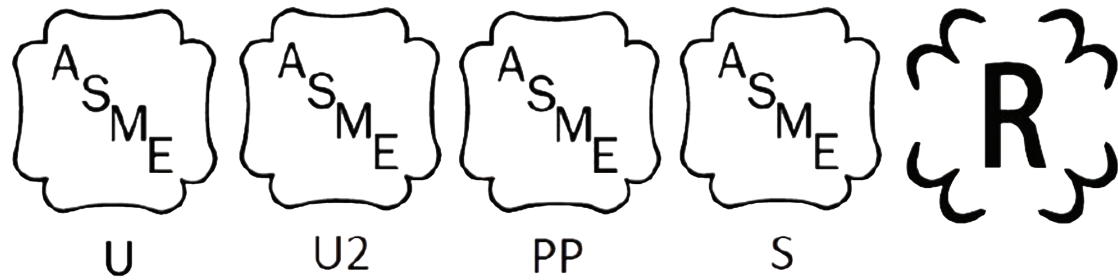
SAFETY FIRST



We ensure that organizations have effective occupational health and safety systems in place to protect employees

- ★ Think Safe
- ★ Act Safe
- ★ Stay Safe

OUR CERTIFICATES











EXC - 4 CERTIFICATED



BUSINESS PARTNERS



Turnkey Construction Projects

Deha Tech Group Company supplies erection services for Civil, Mechanical, Electric & Automation erection services by qualified erection team. Erection works are executed under the safety and regulated working conditions of each country.

During erection period, necessary tests, norms and standard are applied to full fill work completion in proper installation.

And Deha Tech's primary aim is to finish our job properly and always be focused on the future and **produce better results in the field of following services:**

- Civil and Steel Construction
- Residences
- Stadiums /Airports /Hospitals
- Commissioning, Start-up Assistance
- Equipment & Machinery Installation
- Automotive Assembly Plant
- Civil and Steel Construction
- Ammonium Urea and Fertilizer Plant
- Port and Harbour
- Roads and Bridges



KARTEPE FACTORY AND ADMINISTRATIVE BUILDING PROJECT

Project Name Kartepe Factory and Administrative Building

Location Turkey / Kocaeli / Kartepe / Arslanbey

Client Deha Tech Machinery

Project Start 05/07/2020

Finish Date 07/06/2021

Project Scope

- 15250 m2 Land Area
- 2000 m2 Administrative Building
- 10.000 m2 Closed Factory Area
- 1500 m2 Utilites Area
- 5500 m2 Open Stock Area
- Machine foundations
- infrastructure works



KARTEPE FACTORY AND ADMINISTRATIVE BUILDING PROJECT

Civil Works

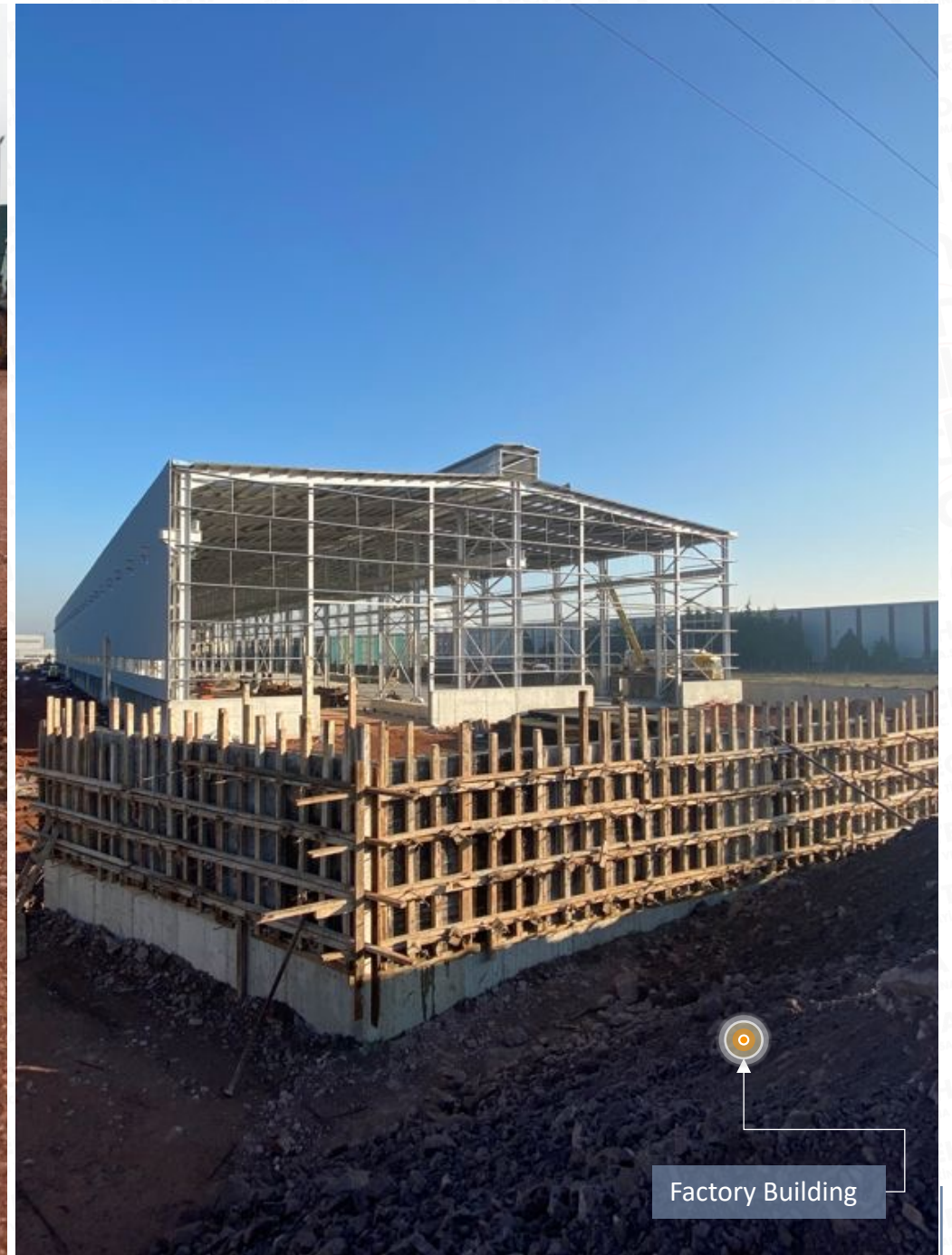
Excavation	m3	12.000
Rainwater and Wastewater Infrastructure	mt	2500
Back Filling	m3	15.000
Form Work	m2	7.000
Rebar $\varnothing 8$ - $\varnothing 24$	ton	400
Concrete	m3	2000
Waterproofing	m2	2500
Industrial Floor Concrete (h=20cm)	m2	16.000
Sandwich Panel Erection	m2	15.000
Silicone Facade System	m2	450
Steel Structure Erection and others	ton	1200



KARTEPE FACTORY AND ADMINISTRATIVE BUILDING PROJECT



Administrative Building

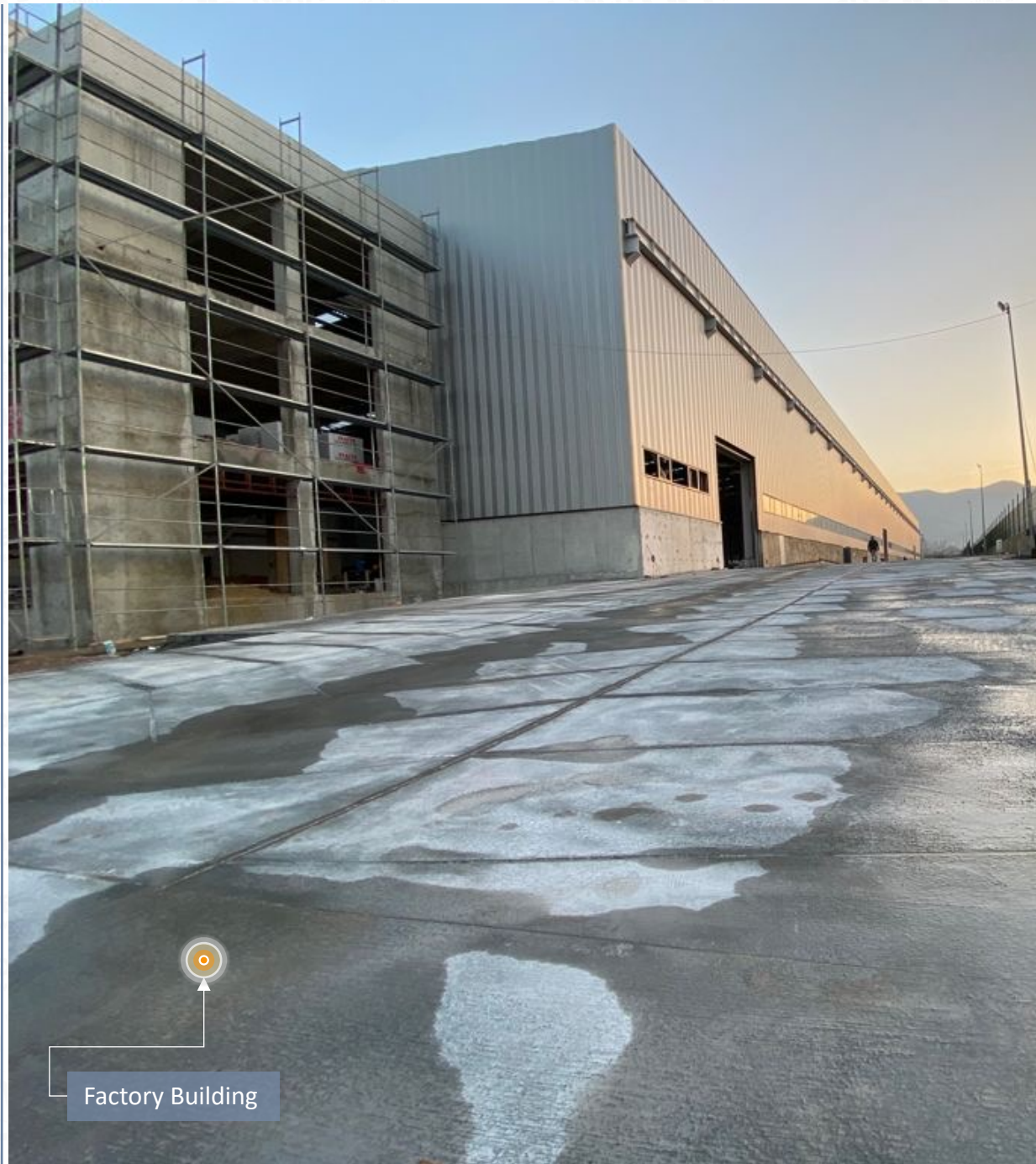


Factory Building

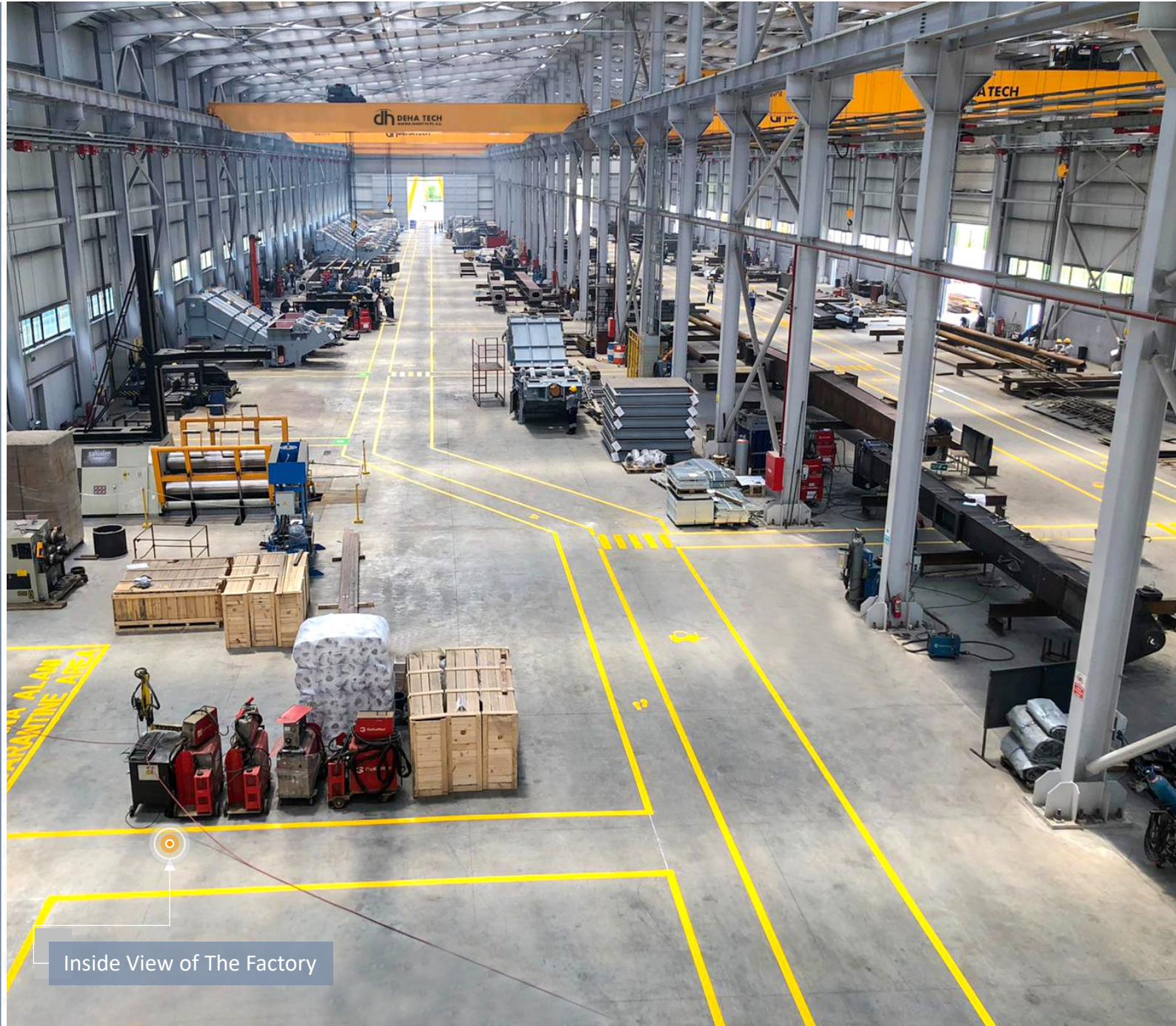
KARTEPE FACTORY AND ADMINISTRATIVE BUILDING PROJECT



KARTEPE FACTORY AND ADMINISTRATIVE BUILDING PROJECT



KARTEPE FACTORY AND ADMINISTRATIVE BUILDING PROJECT



Inside View of The Factory



Inside View of The Factory



Inside View of The Factory

GARRI-3 OCPP PROJECT CONSTRUCTION INFORMATION

Project Name	Garri-3 SCPP, Tank Farm and Fuel Unloading Stations
Location	Sudan
Client	SEMI International Trading FZE
Project Start	21.12.2018
Project Finish	Ongoing
Project Scope	Engineering, Procurement, Construction, Test and Commissioning of Fuel Unloading Station and Fuel / Water Tanks in Garri-3 Open Cycle Power Plant

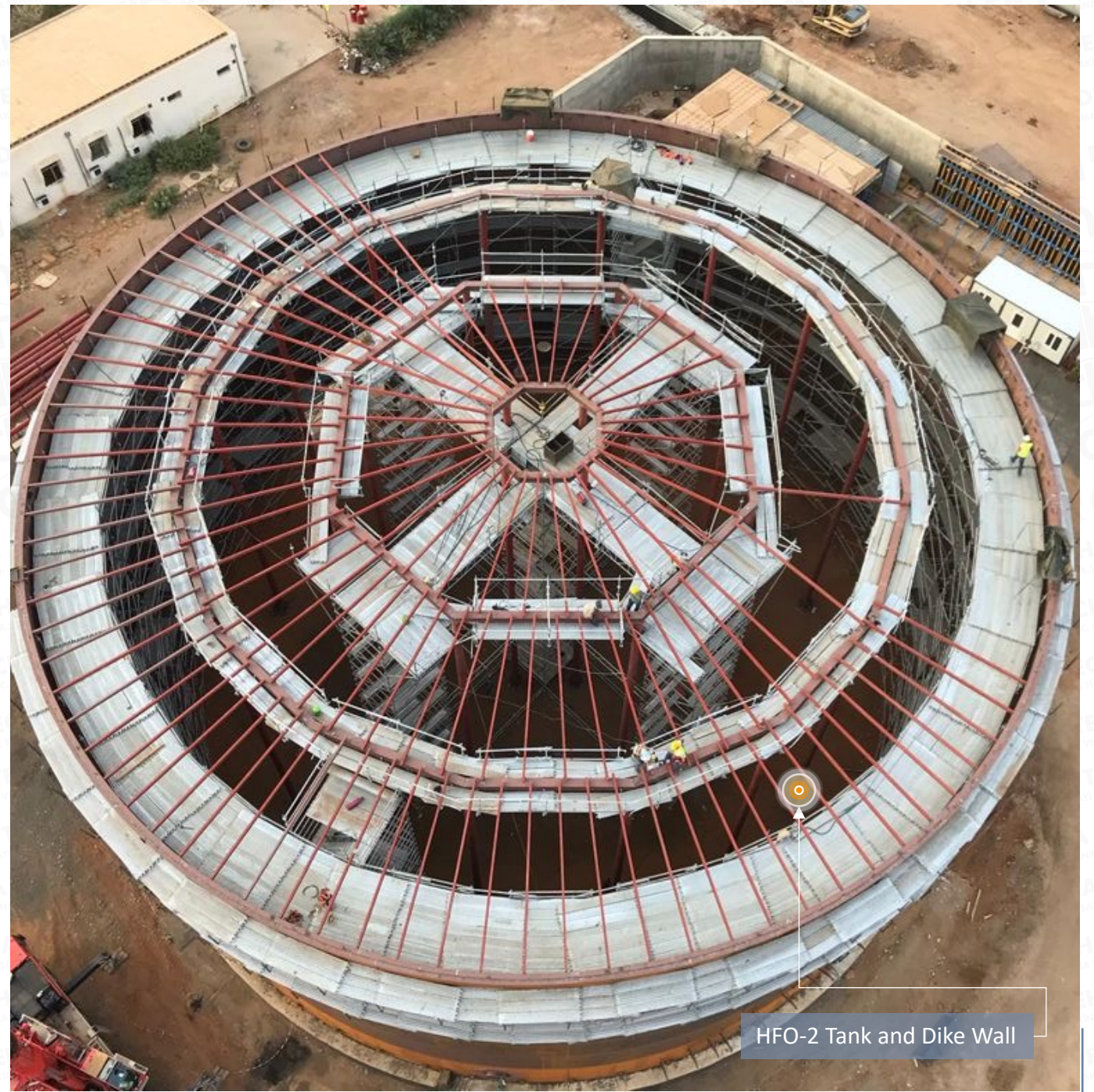


Construction Tank Farm and Fuel Unloading Station

GARRI-3 OCPP PROJECT CONSTRUCTION INFORMATION



Works Completed by Deha Tech

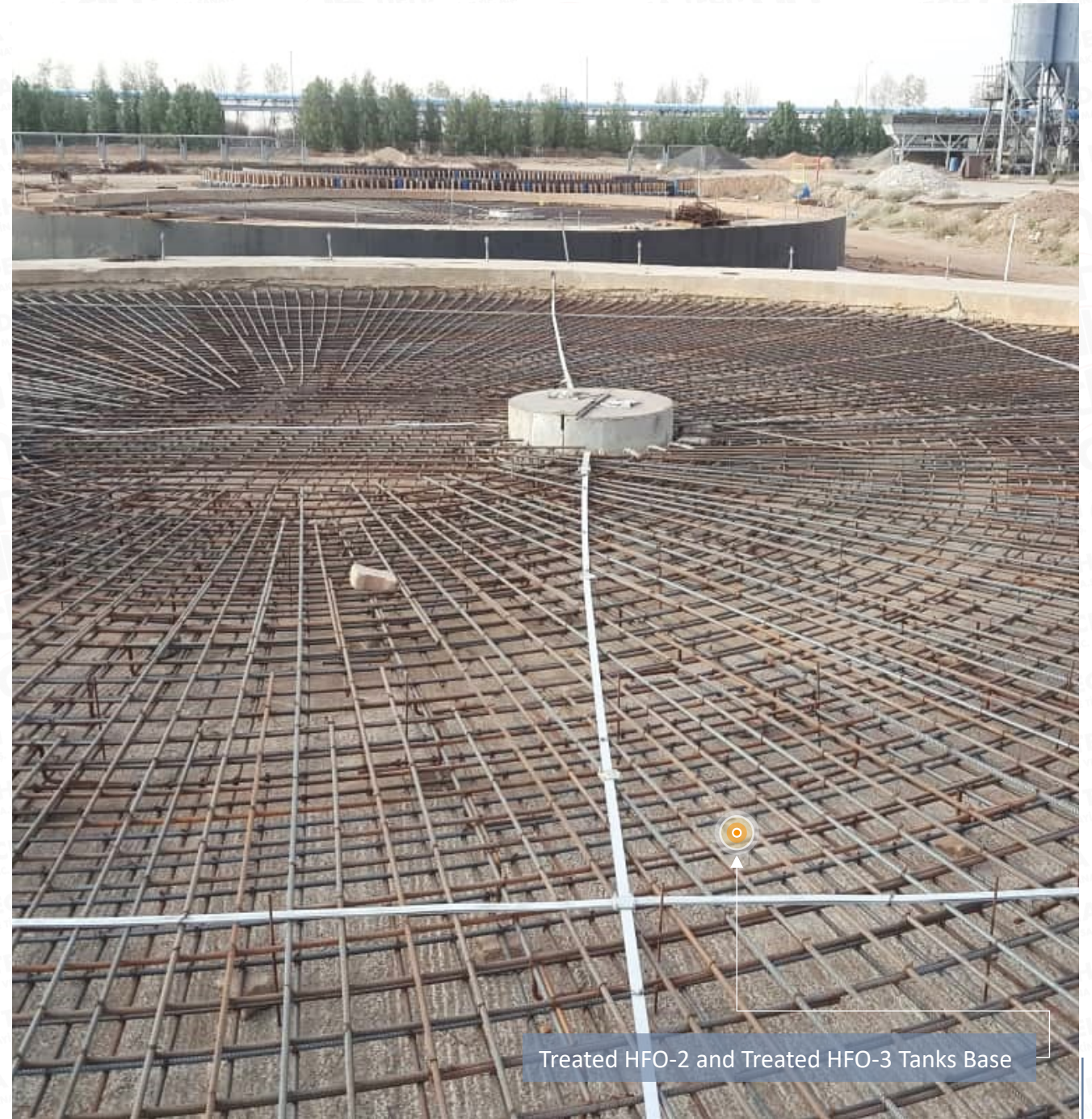


HFO-2 Tank and Dike Wall

GARRI-3 OCPP PROJECT CONSTRUCTION INFORMATION



Foam Station and Valve Chamber for LDO and HFO-1 Tank



Treated HFO-2 and Treated HFO-3 Tanks Base

GARRI-3 OCPP PROJECT CONSTRUCTION INFORMATION



HFO-3 Tank Base



Foam Station

WAEZ PLANT PROJECT BUILDING INFORMATION

Project Name	Waelz facility for processing of Zinc Bearing Materials
Location	Bulgaria
Client	HARMONEE
Project Start	09.03.2020
Project Finish	Ongoing
Project Scope	Construction of “Waelz facility for processing of Zn Bearing Materials Project” civil and mechanical works

BUILDINGS

Rotary Kiln Station

Roller Station and Burner Building

Feed Hopper Building

Drum Cooler and Clinker Pit

Settling Chamber and Stair Tower

Raw Material Storage

Silo Building



Construction of Waelz Facility

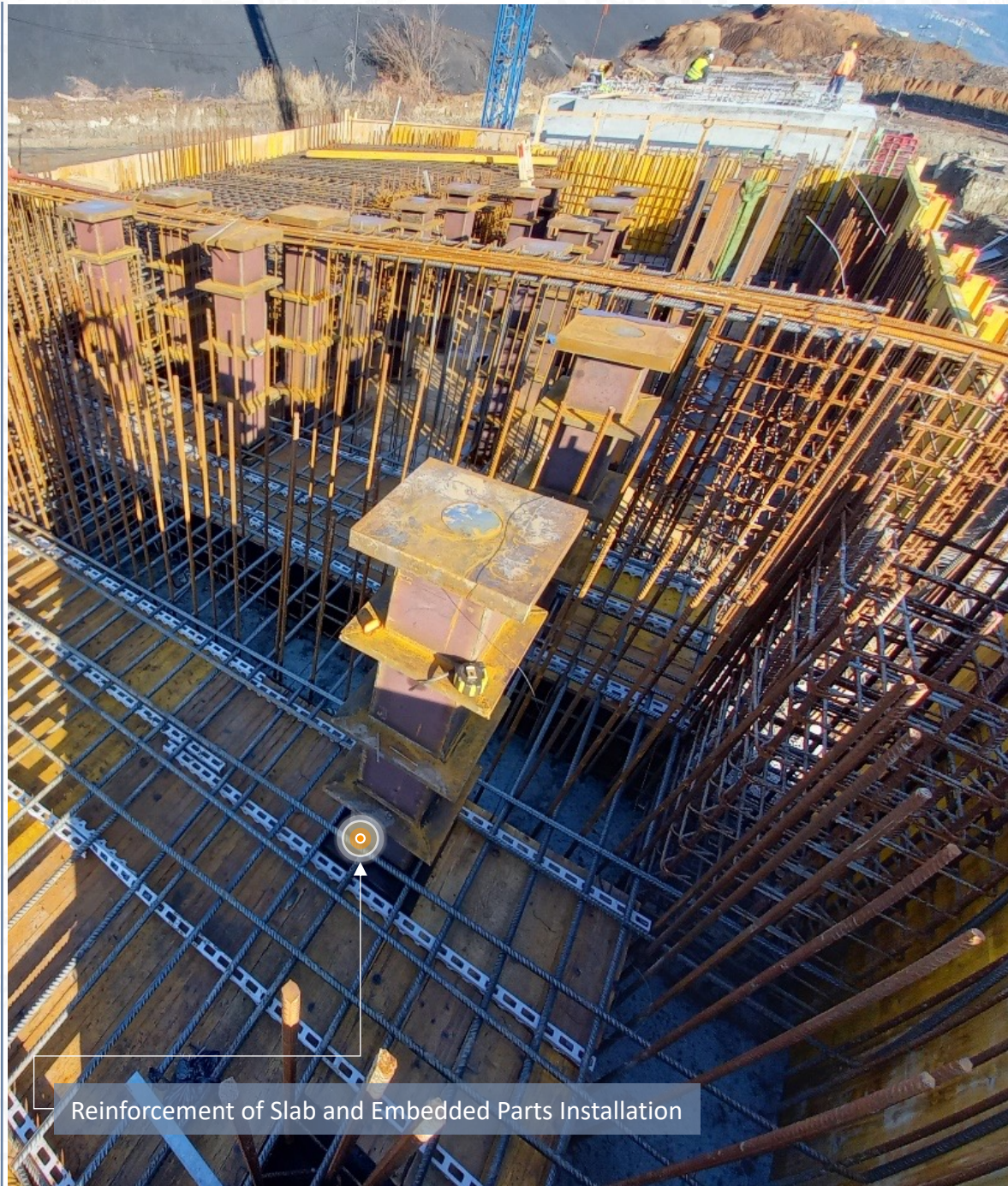
WAEZ PLANT PROJECT BUILDING INFORMATION

Civil Works	Units	Quantity
Form Work	m2	5350
Concrete	m3	4200
Reinforcement Steel	t	570
Roller Kiln Station Supporting Constructures for Rotary Kiln	Units	Quantity
Concrete	m3	1500
Form Work	m3	1300
Lean Concrete	m2	80
Rebars	kg	155000



Stages of Construction: Excavation and Backfill

WAEZ PLANT PROJECT BUILDING INFORMATION



Reinforcement of Slab and Embedded Parts Installation



Roller stations 1, 2 and 3 – Completed Civil Works



Foundation Formwork and Reinforcement



Walls Formwork and Reinforcement

WAEZ PLANT PROJECT BUILDING INFORMATION



Feed Hopper Building – it has the deepest foundation	Units	Quantity
--	-------	----------

Concrete	m3	250
----------	----	-----

Form Work	m3	500
-----------	----	-----

Lean Concrete	m2	11
---------------	----	----

Rebars	kg	24200
--------	----	-------

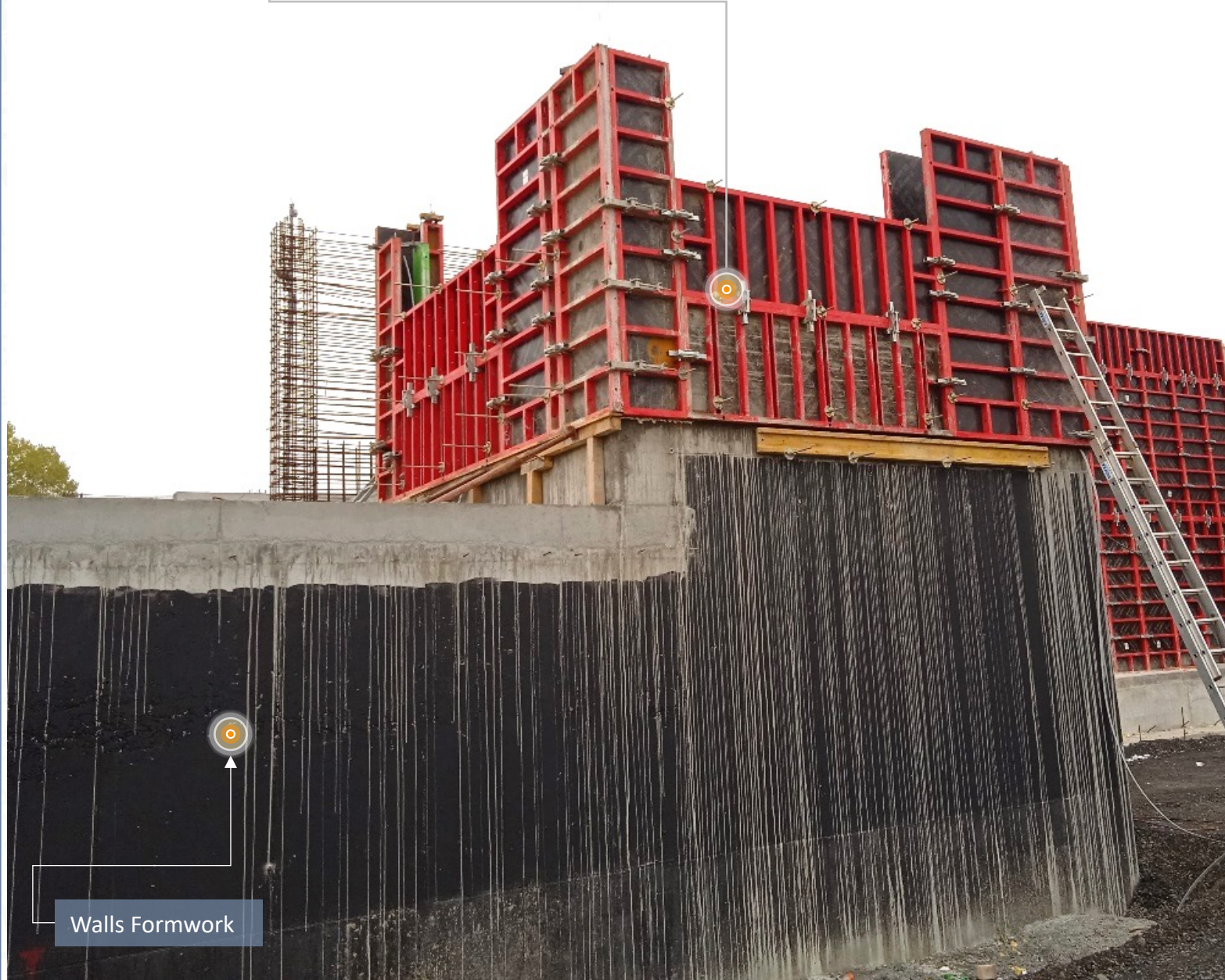
1: Excavation, backfill, lean concrete, waterproofing, lean concrete, reinforced foundation, walls, slabs, embedded steels

Frames and rollers have been installed on all 3 Roller stations

Feed Hopper Building

WAEZ PLANT PROJECT BUILDING INFORMATION

Excavation, Backfill and Lean Concrete



Walls Formwork

Burner Building	Units	Quantity
Concrete	m3	795
Form Work	m3	1300
Lean Concrete	m2	45
Rebars	kg	86500



WAEZ PLANT PROJECT BUILDING INFORMATION



Foundation, Walls, Backfill and Level 0 Slab



Columns, Beams and Slab

WAEZ PLANT PROJECT BUILDING INFORMATION



Erection of Scaffolding Needed to Pour The Slab



Completed Reinforced Concrete Structure of Burner Building

WAEZ PLANT PROJECT BUILDING INFORMATION



Settling Chamber and Stair Tower	Units	Quantity
Concrete	m3	500
Form Work	m3	330
Lean Concrete	m2	36
Rebars	kg	50800

Settling chamber and stair tower – Equipment needed for settling the product

1. Excavation, backfill, lean concrete, foundation reinforcement and concrete
2. Formwork, embedded parts and anchorages (needed for the erection of steel structure) and concrete for the columns

Settling Chamber and Stair Tower

WAEZ PLANT PROJECT BUILDING INFORMATION



Concrete Pouring



Supporting Steel Structure

WAEZ PLANT PROJECT BUILDING INFORMATION



Settling Chamber and Stair Tower Complete

Raw Material Storage	Units	Quantity
Concrete	m3	1200
Form Work	m3	1500
Lean Concrete	m2	70
Rebars	kg	81000



Stair Tower Structure

WAEZ PLANT PROJECT BUILDING INFORMATION



Formwork and Reinforcement



Steel Structure Completed

WAEZ PLANT PROJECT BUILDING INFORMATION



Silo Building – Raw Material	Units	Quantity
Concrete	m3	971.32
Form Work	m3	1789.72
Lean Concrete	m2	46.03
Rebars	kg	168610.41

1. Excavation, backfill, lean concrete, reinforced foundation, walls, inside backfill, Ground floor slab



WAEZ PLANT PROJECT BUILDING INFORMATION



Silo Building- View From the Side



Clinker Pit Walls

WAEZ PLANT PROJECT BUILDING INFORMATION



Clinker Pit Reinforcement of Foundation



Drum Cooler Foundation

AREVA MV TRANSFORMER FACTORY CONSTRUCTION



- Scope of Works
- Relocation Manufacturing Equipment
- Uninstalling
- Transportation
- Installing Manufacturing Equipment
- Engineering
- Fabrication
- Erection
- Partial Revamping Equipment

Areva MV Transformer Factory Construction

AREVA MV TRANSFORMER FACTORY CONSTRUCTION

Scope of Works

Relocation Manufacturing Equipment

Uninstalling

Transportation

Installing Manufacturing Equipment

Engineering

Fabrication

Erection

Partial Revamping Equipment



Areva MV Transformer Factory Construction



Areva MV Transformer Factory Construction

BOLU BIOMASS POWER PLANT



Bolu Biomass Power Plant Construction



General View of Bolu Biomass Power Plant Construction

BAGFAS CALCIUM AMMONIUM UREA PLANT



Bagfas Calcium Ammanium Urea Plant

BAGFAS CALCIUM AMMONIUM UREA PLANT



Bagfas Calcium Ammanium Urea Plant



BAGFAS CALCIUM AMMONIUM UREA PLANT



Bagfas Calcium Ammanium Urea Plant



Bagfas Calcium Ammanium Urea Plant



UZBEKISTAN CEMENT PLANT PROJECT INFORMATION

Scope of Works	
Project Name	Construction of the 4th technological line for the production of clinker» in the territory of JSC «QIZILQUMSEMENT»
Project Location	Uzbekistan
Client	QIZILQUM CEMENT
Project Start Date	6.10.2020
Project Finish Date	23.02.2022
Project Scope	Construction of the 4th technological line for the production of clinker



BUILDINGS

Piling Works

Preheater Tower Concrete Structure

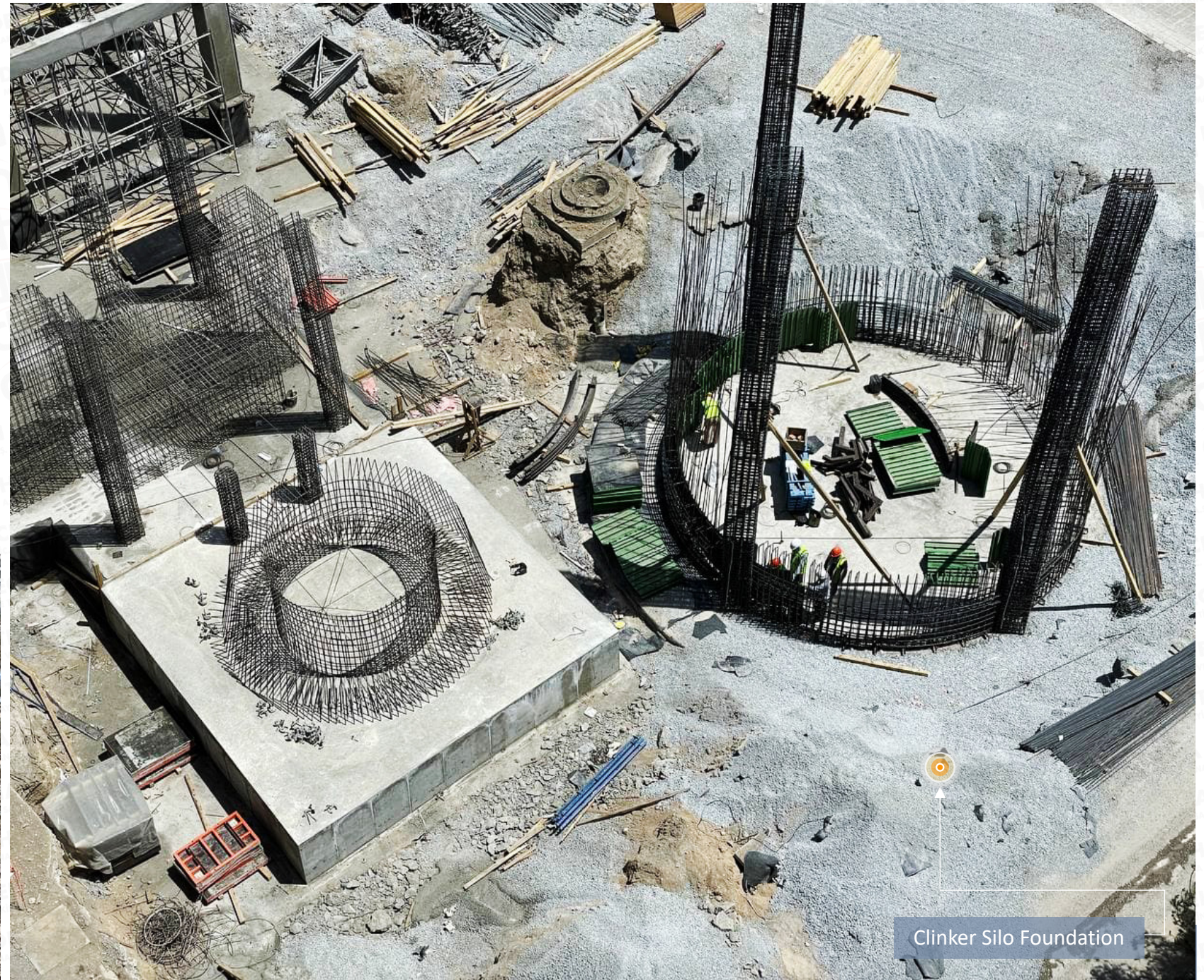
Rotary Kiln Concrete Structure

Cooler and Cooler Filter Concrete Structure

Cement Silos Concrete Structure

Cooling Tower Foundation Structure

Kiln Filter and Vertical Raw Mill Concrete Structure



UZBEKISTAN CEMENT PLANT PROJECT INFORMATION

Civil Works	Unit	Quantity
Piling Works	mt	11.000
Excavation	m3	48.500
Back Filling	m3	16.500
Form Work	m2	32.000
Concrete	m3	19.000
Reinforcement Steel	kg	2,600
Steel Structure & Equipment Erection	Tons	8.000



UZBEKISTAN CEMENT PLANT PROJECT INFORMATION



Uzbekistan Cement Plant Construction

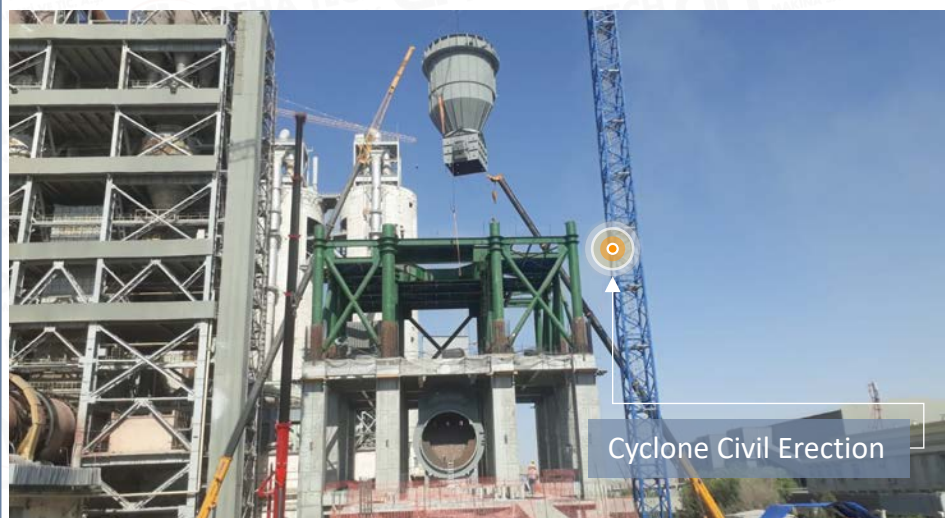


Uzbekistan Cement Plant

UZBEKISTAN CEMENT PLANT PROJECT INFORMATION



Rotary Kiln



Cyclone Civil Erection



Foundation Civil Works

CEMENT PLANT 5500 TPD TURNKEY FOR CLINKER LINE / NAVOI - UZBEKISTAN



TASHKENT GRINDING STATION PROJECT CONSTRUCTION INFORMATION

Project Name	Tashkent 100TPH Cement Grinding And Packing Station
Location	Uzbekistan
Client	RWS OPTIMUM
Project Start	09.03.2021
Project Finish	23.02.2022
Project Scope	Construction of the 4th technological line for the production of clinker



Grinding and Packing Station

BUILDINGS

Piling Works

Wagon Unloading Concrete and Steel Structure

Cement Stockhol Concrete and Steel Structure

Cement Dosing Concrete and Steel Structure

Cement Mill Concrete and Steel Structure

Cement Silos Concrete and Steel Structure

Cement Packing Concrete and Steel Structure



Cement Packing Concrete and Steel Structure

TASHKENT GRINDING STATION PROJECT CONSTRUCTION INFORMATION

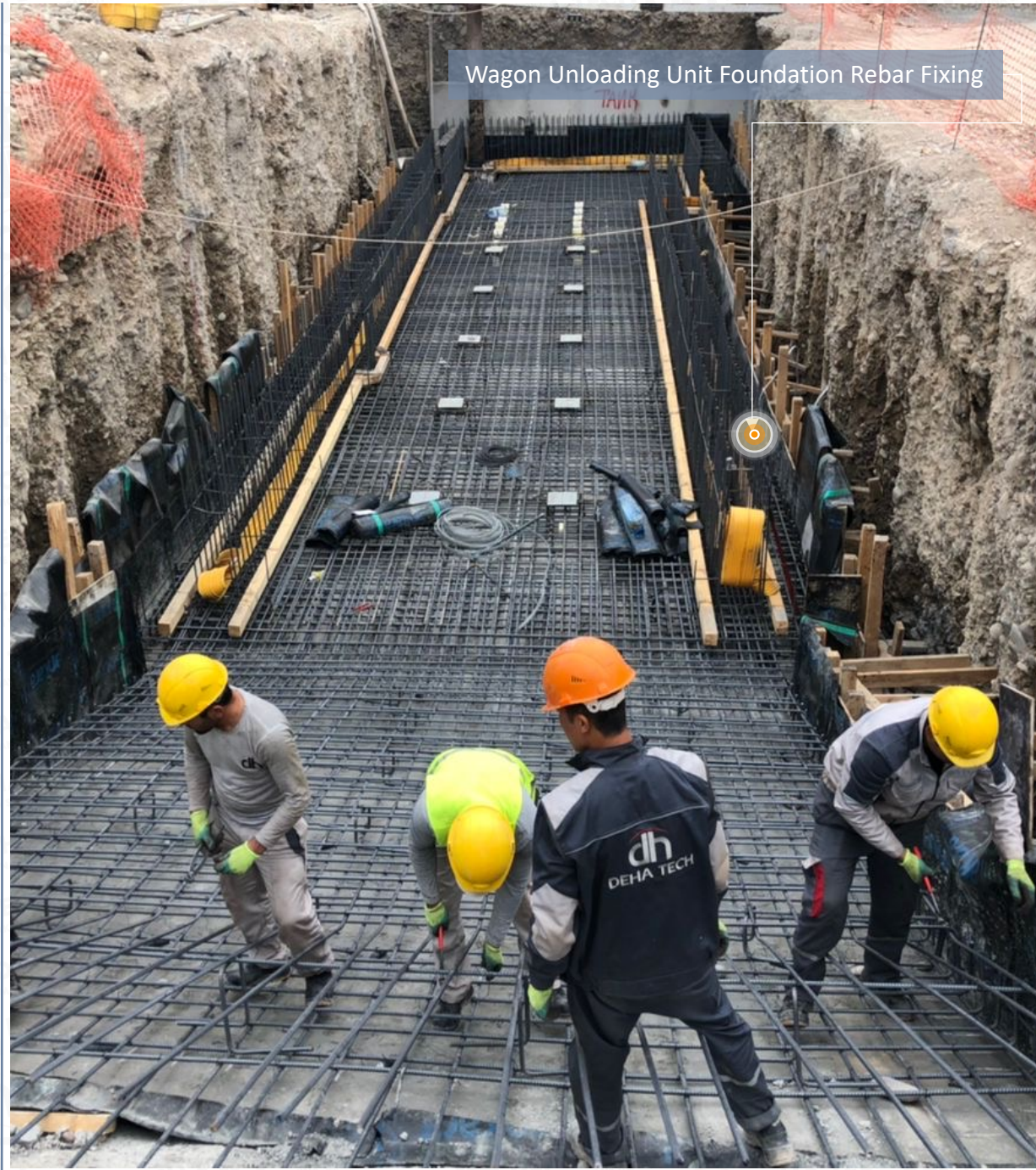
Civil Works	Units	Quantity
Piling Works	mt	360
Excavation	m3	18.500
Backing Filling	m3	10.500
Form Work	m2	3.400
Concrete	m3	15.200
Reinforcement Steel	t	1.400
Steel Structure Erection Others	t	1.200



TASHKENT GRINDING STATION PROJECT CONSTRUCTION INFORMATION



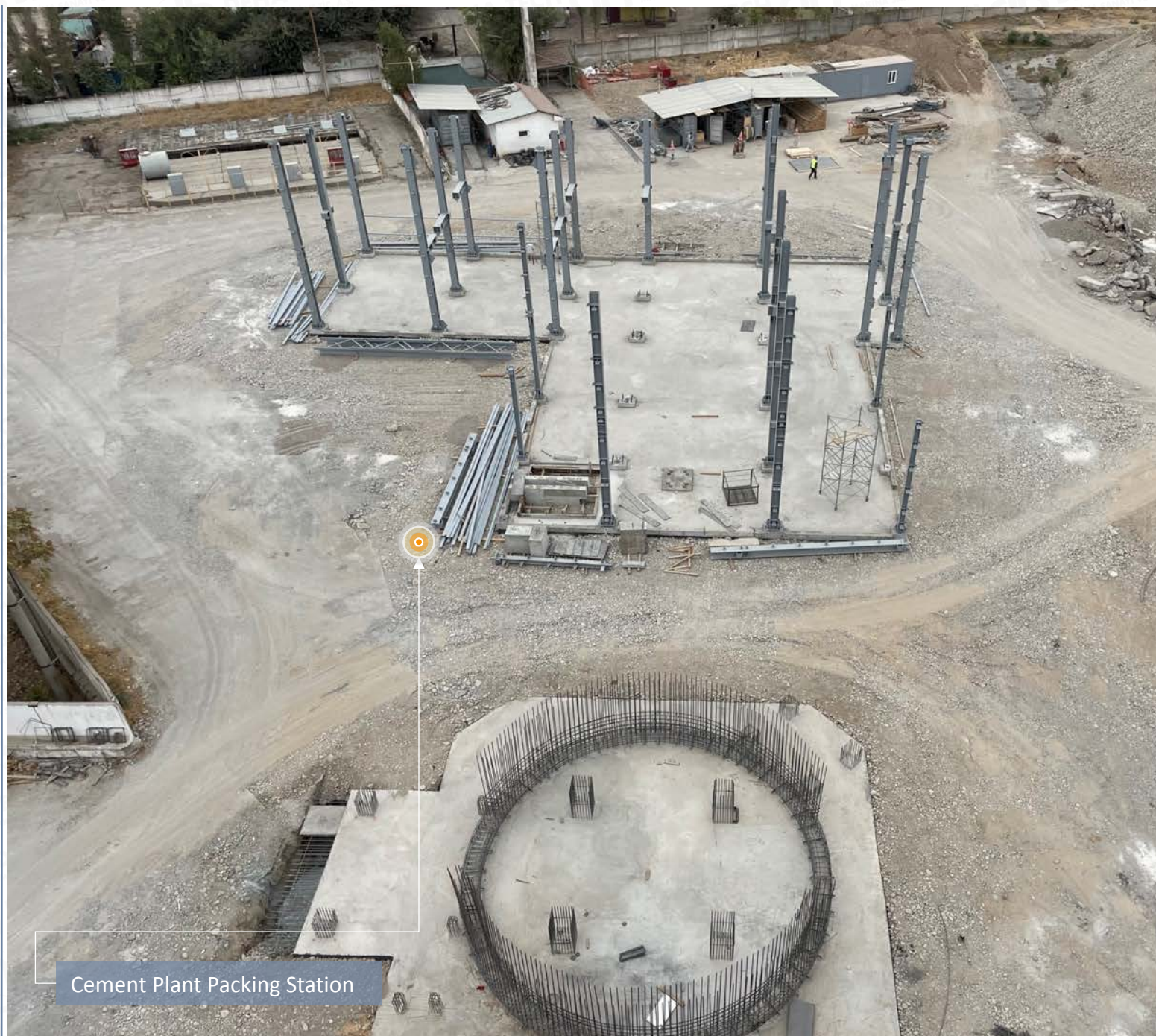
TASHKENT GRINDING STATION PROJECT CONSTRUCTION INFORMATION



TASHKENT GRINDING STATION PROJECT CONSTRUCTION INFORMATION



TASHKENT GRINDING STATION PROJECT CONSTRUCTION INFORMATION



TASHKENT GRINDING STATION PROJECT CONSTRUCTION INFORMATION



Cement Silo



Cement Silo



Cement Silo

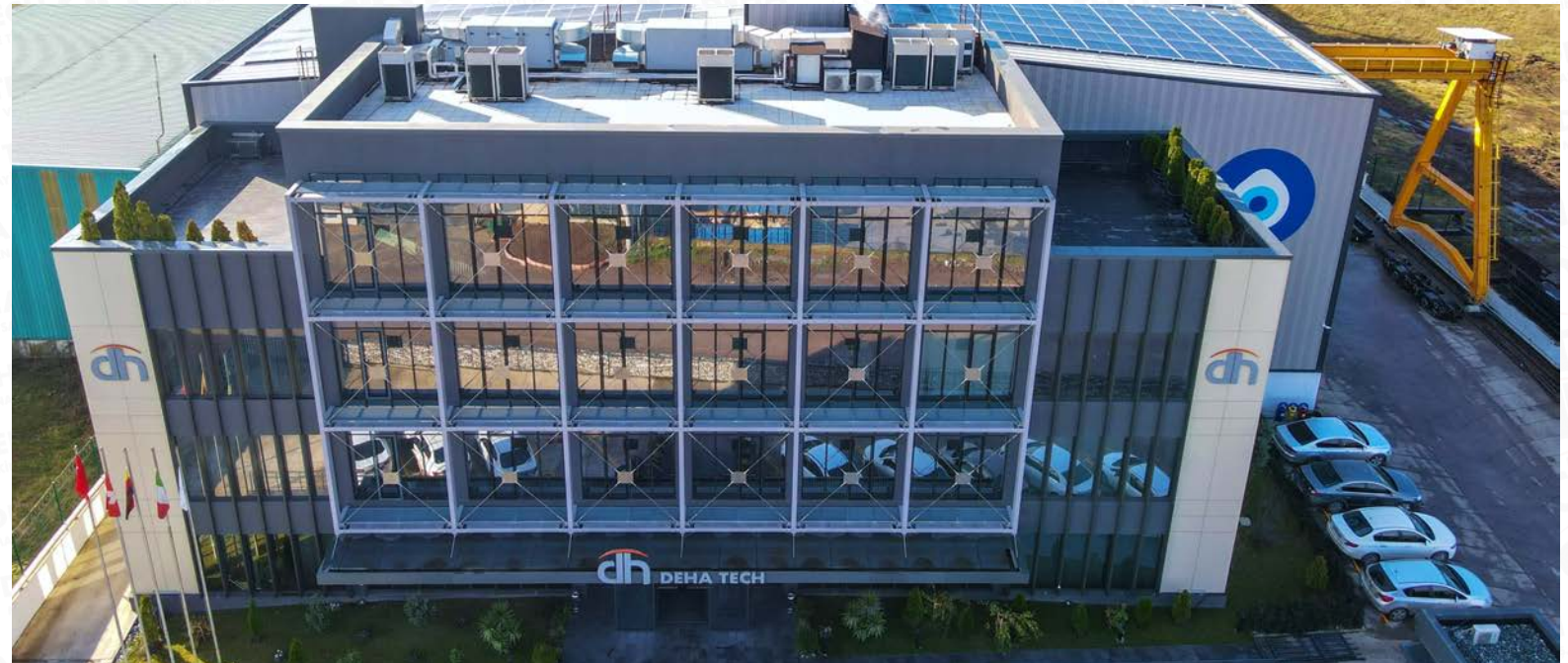
A large group of employees, mostly men wearing yellow hard hats and dark work uniforms with reflective stripes, are posed in several rows in front of a modern building. The building has large glass windows and a prominent logo consisting of the letters 'dh' in a stylized font with an orange arc above it, followed by the text 'DEHA TECH' in large, bold, grey letters. Some employees in the front row are wearing white hard hats and high-visibility yellow safety vests. The scene is set outdoors during the day.

dh DEHA TECH

MANUFACTURING PLANTS

KARTEPE FACTORY 1 PROFILE

Location	Kartepe	Status	Active
Open Area	18.000 m ²	Closed Area	10.000 m ²
Production Capacity	4.800 t	Personnel	150
Main Equipment	<p>1500 mm x 300 mm Hydraulic Press 300 t HPK 100 Profile and Pipe Rolling Machine MIG / MAG Welding Machines TIG Welding Machines Aluminium Welding Machines Submerged Arc Welding Machines Sleeve Welding Machine Electric Welding Machine Screw Lathe Weighing Machine 150 t Band Saw Cutting Machine, D 1000 mm Radial Drill + Threading, Hole D 50 mm 3 x 4 Rolls Hydraulic Plate Bending Machine Up to 80 mm x 3000 mm Bending Capacity Up to 12 mm x 3000 mm Bending Capacity Up to 60 mm x 3000 mm Bending Capacity</p>		
Crane Capacity	<p>8 x 30 t Overhead Cranes x (h) 9.5 m 1 x 20 t Portal Crane x (h) 9.5 m 2 x 25 t Portal Cranes x (h) 9.5 m 1 x 30 t Portal Crane x (h) 9.5 m 1 x 15 t Portal Crane x (h) 9.5 m</p>		



KARTEPE FACTORY 2 PROFILE

Location	Kartepe
Status	Active
Open Area	2.500 m ²
Closed Area	2.500 m ²
Production Capacity	5.000 t
Personnel	40
Main Equipment	3 m x 12 m CNC Plasma + Oksi (Angle Cutting) 2,5 m x 12 m CNC Plasma (Angle Cutting) 12 m Plasma Pipe Cutting Machine Band Saw Cutting Machine Radial Drill + Threading, Hole D 50 mm 7100*600 mm Hydraulic Bending 700 t 1020*150 mm Hydraulic Bending 150 t 4000*440 mm Hydraulic Bending 440 t Screw Lathe Sand Blasting Cabinet & Paint Area CNC Milling Machine Universal Milling Machine Turning Lathe CNC Turning Machine
Crane Capacity	4 x 10 t Crane x (h) 7.3 m



GEBZE FACTORY PROFILE

Location	Gebze
Status	Active
Open Area	1.000 m ²
Closed Area	3.000 m ²
Production Capacity	2.200 t
Personnel	65
Main Equipment	3 m x 12 m CNC Plasma + Oksi (Angle Cutting) Radial Drill + Threading, Hole D 50 mm Band Saw Cutting Machine Screw Lathe 2 x Submerged Arc Welding Machines MIG / MAG Welding Machines TIG Welding Machine Electric Welding Machine 4 Roll 40 mm x 3000 mm Bending Machine Up to 30 mm x 3000 mm Bending Capacity
Crane Capacity	1 x 30 t Overhead Crane x (h) 8 m 2 x 20 t Overhead Crane x (h) 8 m 1 x 10 t Portal Crane x (h) 8 m



HAYDARPASA PORT PROFILE

Location	Haydarpaşa Port
Status	Active
Open Area	50.000 m ²
Closed Area	1.000 m ²
Production Capacity	4.500 Tons
Personnel	230



KARTEPE FACTORY 1 GENERAL VIEW

150 Ton Weighbridge (24m x 3m)

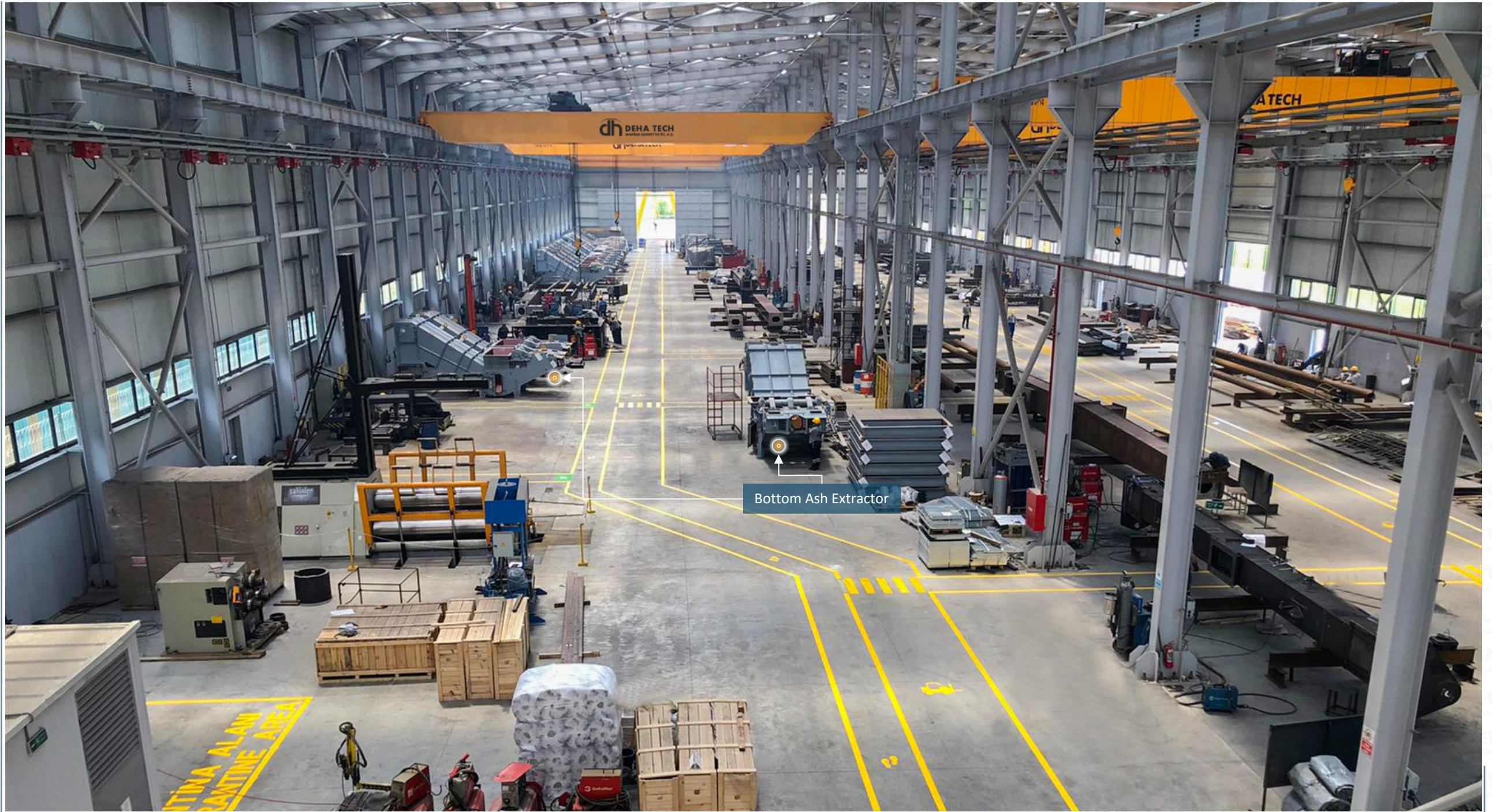
20 Ton Gantry Crane

25 Ton Gantry Cranes

30 + 15 Ton Gantry Crane

Deha Tech continues to provide the highest quality services worldwide at full speed, with a total of 2000 employees, 4 factories and 1 port in a 59000 sqm production area.

DEHA TECH KARTEPE FACTORY INTERIOR VIEW



DEHA TECH KARTEPE FACTORY GENERAL VIEW



DEHA TECH KARTEPE FACTORY 2

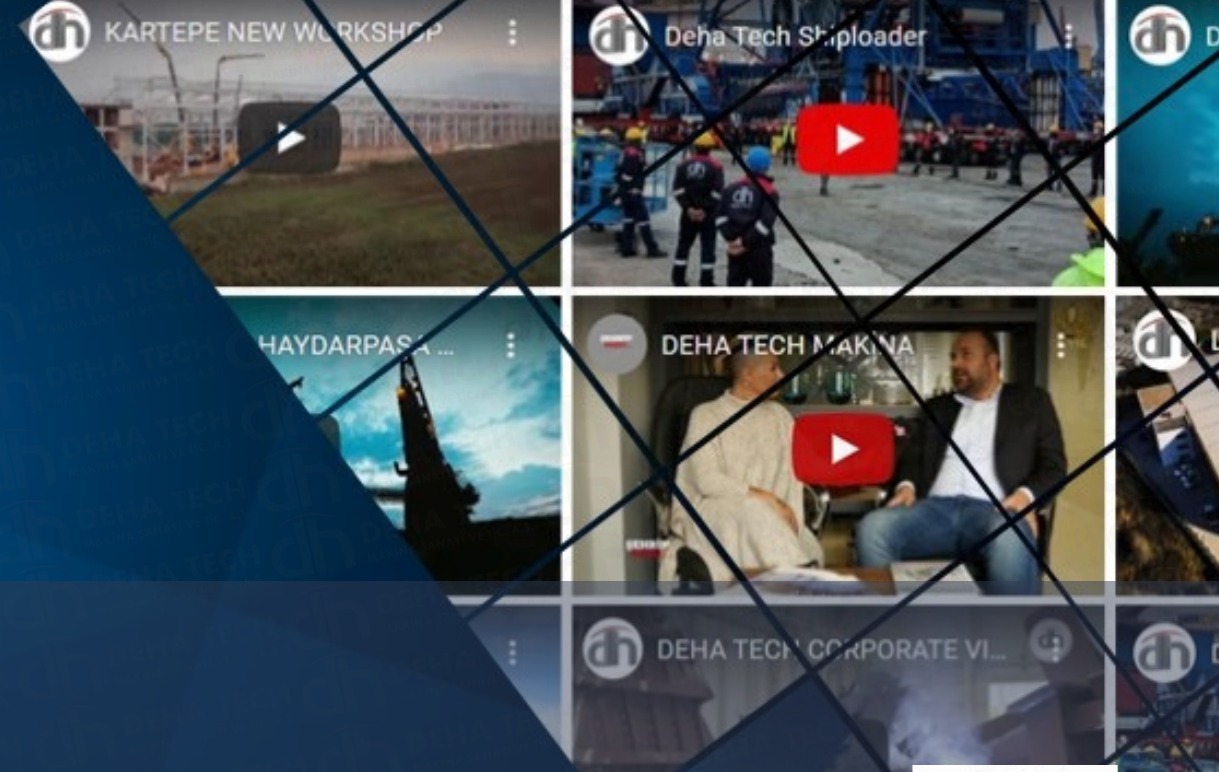
DEHA TECH KARTEPE FACTORY 1

Fast Response

Technology Driven Projects

Sustainable Profitability and Financial Stability

DEHA TECH`S CONTACT DETAILS



www.dehatech.com

▶ Deha Tech Headquarters

A : Kemeraltı Caddesi No:28, Pk:34425,
Müeyyedzade Mahallesi, Karaköy /
İSTANBUL / TR

W : info@dehatech.com

W : www.dehatech.com

T : +90 212 252 48 00

▶ Kartepe Factories

A : Arslanbey Mahallesi, Yeşilevler Sokak,
No:5, Pk:41285, Kartepe / KOCAELİ / TR

A : Arslanbey OSB Mahallesi, 3. Sokak,
No:12, Pk:41285, Kartepe / KOCAELİ / TR

▶ Gebze Factory

A : Barış, Koşuyolu Cd. No:23, Pk: 41400
Gebze/Kocaeli



Genius Solutions For Industrial Projects



THANK YOU

www.dehatech.com