



DEHA TECH

PRESSURE VESSELS & TANKS
INDUSTRY INC.

www.dehatech.com



ABOUT GEBZE FACTORY 1

Deha Tech is committed obtaining the highest standard of client satisfaction and providing long-term business relations with its clients. Since 2009 we are proud to have completed more than 100 projects and work every day to be a global partner with the promise of excellence.

Gebze Factory 1 manufacturing process started on July 2018 which was built in line has a closed area of **3.000 m²** and an open area of **2000 m²** with an annual production capacity of **2.500 tons**, one piece of lifting capacity up to **60 tons** and a crane hook height of **9 meters** and is structured to be suitable for the production of industry equipment.

Our Factory located at a distance of 30 km from İstanbul and it is geographically well located with its broad supplier network and easy transportation.

The main fields of activity of our factory are manufacturing and assembly of energy-process modules, including pressure vessel, steel structure, steel bridge, process equipments, heat recovery boilers, power-process-turbine piping systems design, engineering precision machining services.

Manufacturing is done within the framework of the norms requested by the customer and for this reason, quality control procedures are evaluated and reported according to international standards such as ASME, AISC, API, AS9100, AWS, ISO and EN within the scope of the criteria and tolerances of these norms.



ABOUT GEBZE FACTORY 2

Our Gebze Factory 2 has a closed area of **5,000 m²** and an open area of **3.000 m²** with an annual pre-manufacturing capacity of **3.000 tons**, a lifting capacity of up to 50 tons and a crane hook height of 6 meters and is structured to be suitable for steel structure and industrial equipments' including column arm saw welding machine, bending, machining activities and sandblasting & painting operations.

We are close to the international ports in the Marmara region and have great potential to manufacture industrial products all over the world.

Manufacturing is done within the framework of the norms requested by the customer and for this reason, quality control procedures are evaluated and reported according to international standards such as ASME, AISC, API, AS9100, AWS, ISO and EN within the scope of the criteria and tolerances of these norms.



MAIN BUSINESS AREAS

CEMENT & MINING INDUSTRY

Clinker Production Plant, Gypsum Production Plant, Cement Grinding Plant, Coal Grinding Plant, Process and Non-Process Equipment, Waelz Plant, Zinc Plant



ENVIRONMENTAL TECHNOLOGIES

Water Treatment Plant, Wastewater Treatment Plant, DeNOx and DeSOx Systems, Dedusting Filters and Systems for FGD



FUEL , OIL AND GAS INDUSTRY

Fuel Storage Systems, LNG – LPG Facilities, Onshore/ Downstream, Topping Plant, Asphalt Production Plant, Air Separation Units.



ENERGY SECTOR

Thermal Power Plants, Renewable Power Plants, Electric Substation, High Voltage Transmission Line



CONSTRUCTION & CIVIL WORK

Civil and Steel Construction, Industrial Buildings, Process and Non-Process Infrastructure and Superstructure



FABRICATION

Storage Tanks, Pressure Vessels, Rotary Kiln and Dryer, Vertical and Ball Mill, Classifier-Separators, Conveying and Material Handling Systems, Plate Works Manufacturing, Silo & Bunkers





DEPARTMENTS OF FACTORIES

- ★ Project Management
- ★ Human Resources
- ★ Tendering
- ★ Purchasing & Procurement
- ★ Manufacturing
- ★ Sandblasting & Painting
- ★ Quality Assurance and Quality Control
- ★ HSE
- ★ General Administration
- ★ Planning & Cost Controlling
- ★ Logistic
- ★ Storage
- ★ Assembly / Erection
- ★ Maintenance

GEBZE FACTORY 1 STAFF

- ★ Total Staff : 60
- ★ Administrative Personnel : 8
- ★ Engineers : 12
- ★ Qualified Workers : 40

GEBZE FACTORY 2 STAFF

- ★ Total Staff : 80
- ★ Administrative Personnel : 6
- ★ Engineers : 8
- ★ Qualified Workers : 66



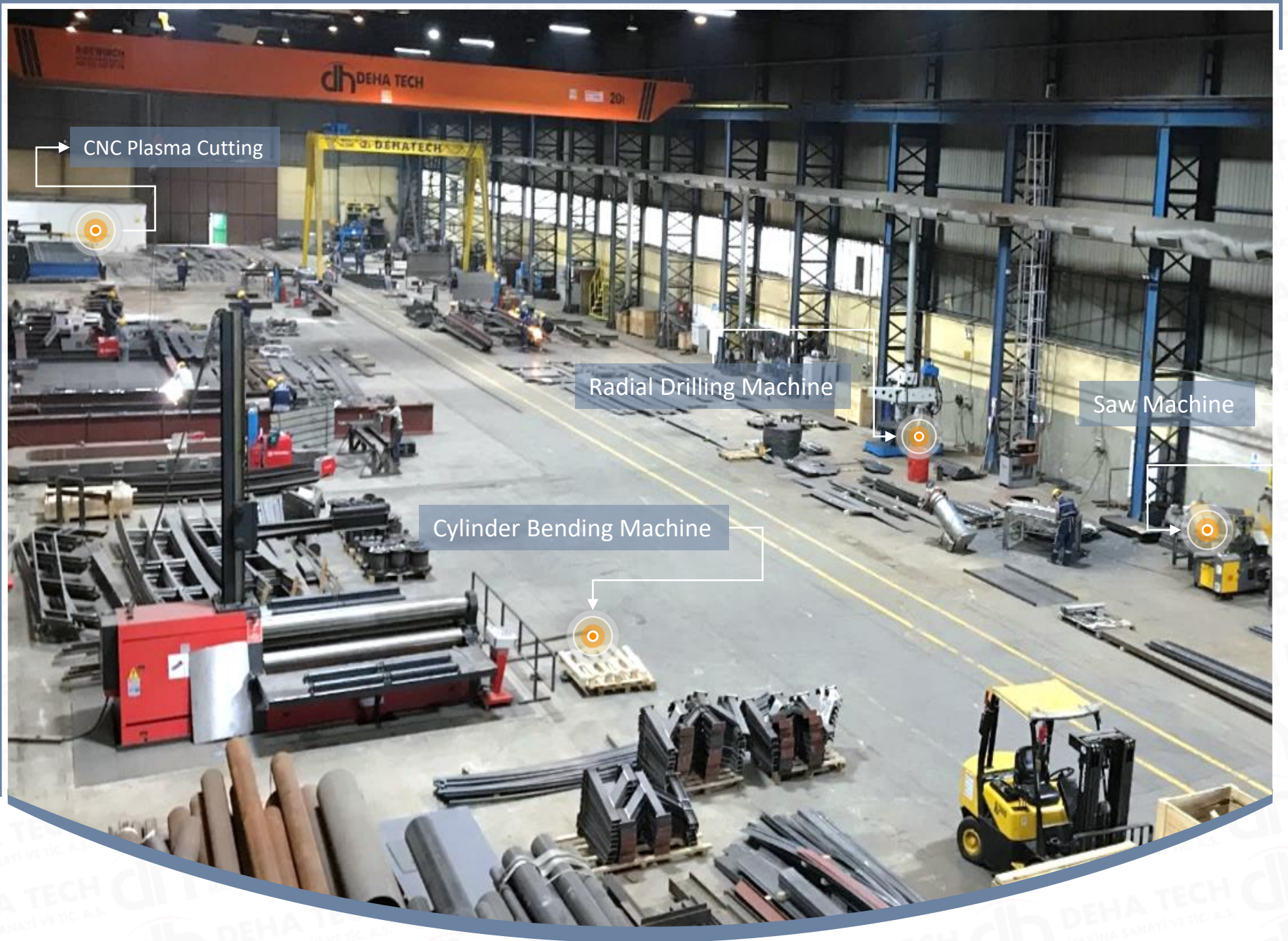
FACTORY 1 PROFILE

- ★ Capacity : 120 Ton / Month (Equipment), 360 Ton / Month (Steel Structure)
- ★ Total Area : 5.000 m² (3.000 m² Closed / 2.000 m² Opened)
- ★ Manufacturing Halls : 1
- ★ Halls' Length : 100 m
- ★ Halls' Width : 30 m
- ★ Over Head Cranes : 1 ea x 30 Tons / Crane x (h) 9 m x (w) 28 m
- ★ Over Head Cranes : 2 ea x 20 Tons / Crane x (h) 9 m x (w) 28 m
- ★ Portal Cranes : 1 ea x 10 Tons / Crane x (h) 5.5 m x (w) 7 m
- ★ Bending Press Capacity: : 100 Tons / Month
- ★ Plasma Cutting Capacity : 350 Tons / Month



FACTORY 2 PROFILE

- ★ Total Area : 8.000 m²
- ★ Closed Area : 5.000 m²
- ★ Open Area : 3.000 m²
- ★ Halls' Length : 80 m
- ★ Halls' Width : 60 m
- ★ Manufacturing Halls : 4
- ★ Over Head Cranes : 3 ea x 10 Tons / (w) 20m x (h) 6 m
- ★ Over Head Cranes : 1 ea x 20 Tons / (w) 20m x (h) 6 m
- ★ Over Head Cranes : 1 ea x 30 Tons / (w) 20m x (h) 6 m
- ★ Sandblasting and Painting Capacity : 300 Tons / Month



EQUIPMENT INFO (Gebze Factories)

- ★ 2 Pcs Roll Cylinder Bending Machine
- ★ Pipe Bending Machine
- ★ 300 Tons Press Machine
- ★ GTAW, GMAW, SMAW SAW Welding Machines
- ★ Radial Drilling Machine
- ★ 2 Saw Machines
- ★ Dot Peen Marking Machine
- ★ Sandblasting & Painting Equipments
- ★ CNC Plasma Cutting Machines
- ★ Bevelling Machine
- ★ 2 Column & Boom Welding Machine With Rotator
- ★ 9 Overhead Cranes
- ★ 2 Portal Cranes
- ★ Hydraulic Press Machine



2 Column & Boom Welding Machine With Rotator



CNC Plasma Oxy Cutting Machine

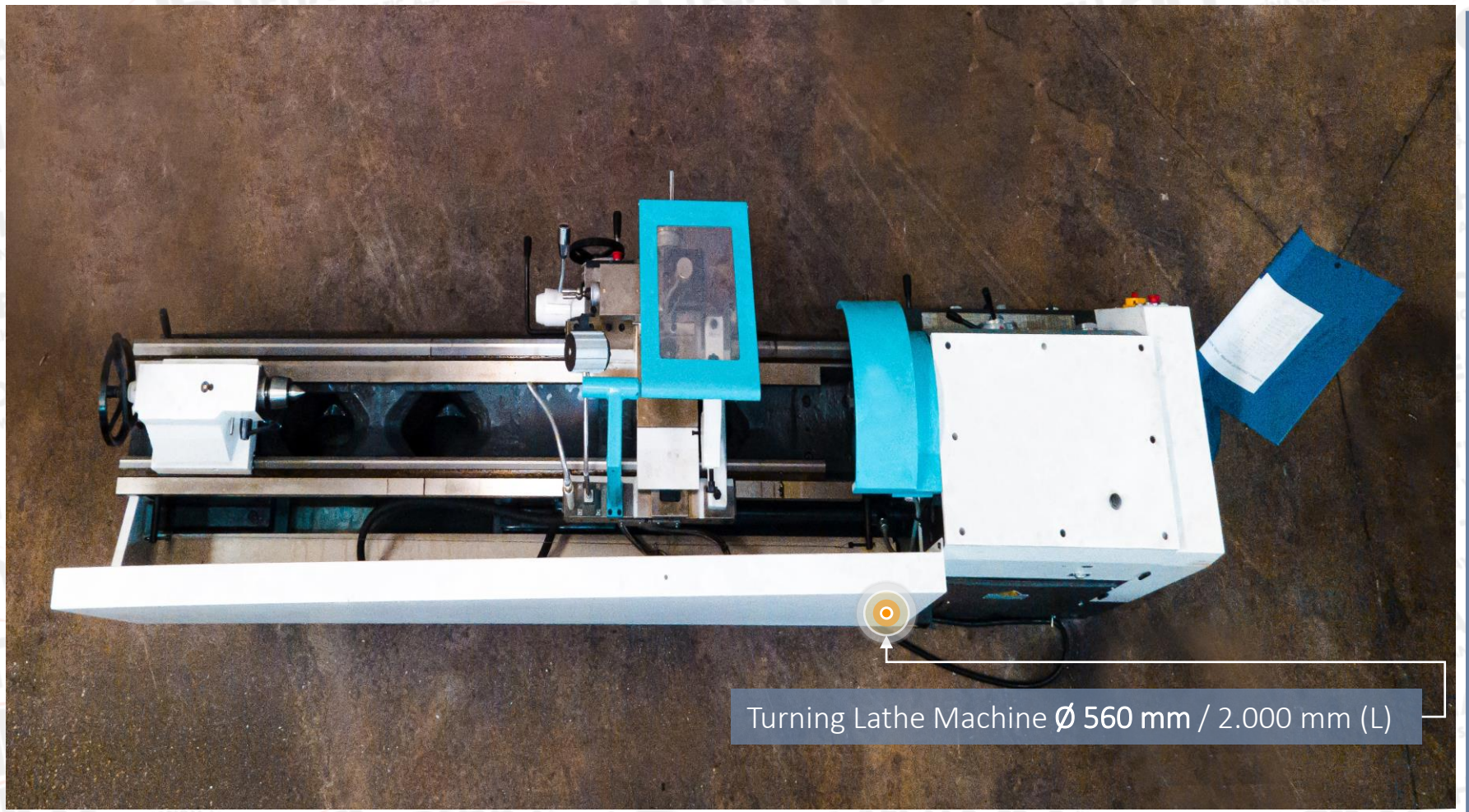
EQUIPMENT



150 Ton Universal T-Slot Hydraulic Press Brake



Hkm 85 Hydraulic Steelworkers



Turning Lathe Machine \varnothing 560 mm / 2.000 mm (L)

DOOR SIZING GUIDE

GEBZE 1 FACTORY DOORS SIZING GUIDE



GEBZE 2 FACTORY DOORS SIZING GUIDE



PRESSURE VESSELS



Degassing Horizontal Pressure Vessel



Degassing Horizontal Pressure Vessel

PRESSURE VESSELS



Horizontal Pressure Vessel



Vertical Surge Tank

PRESSURE VESSELS



Condensate Receiver Tank



Condensate Receiver Tank

PRESSURE VESSELS



Condensate Tank



Condensate Tank



Condensate Tank

PRESSURE VESSELS



Condensate Receiver Tank



Condensate Receiver Tank

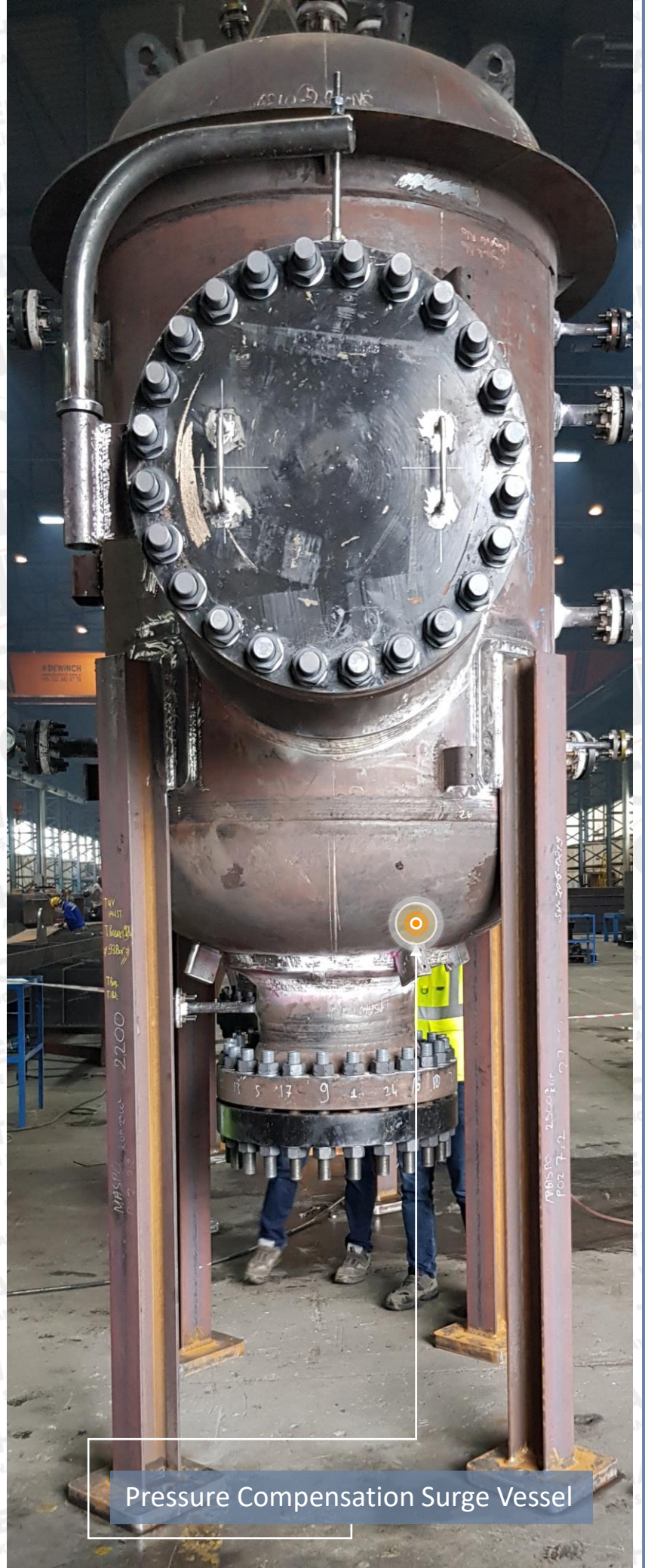


Condensate Receiver Tank

PRESSURE VESSELS



Pressure Compensation Surge Vessel



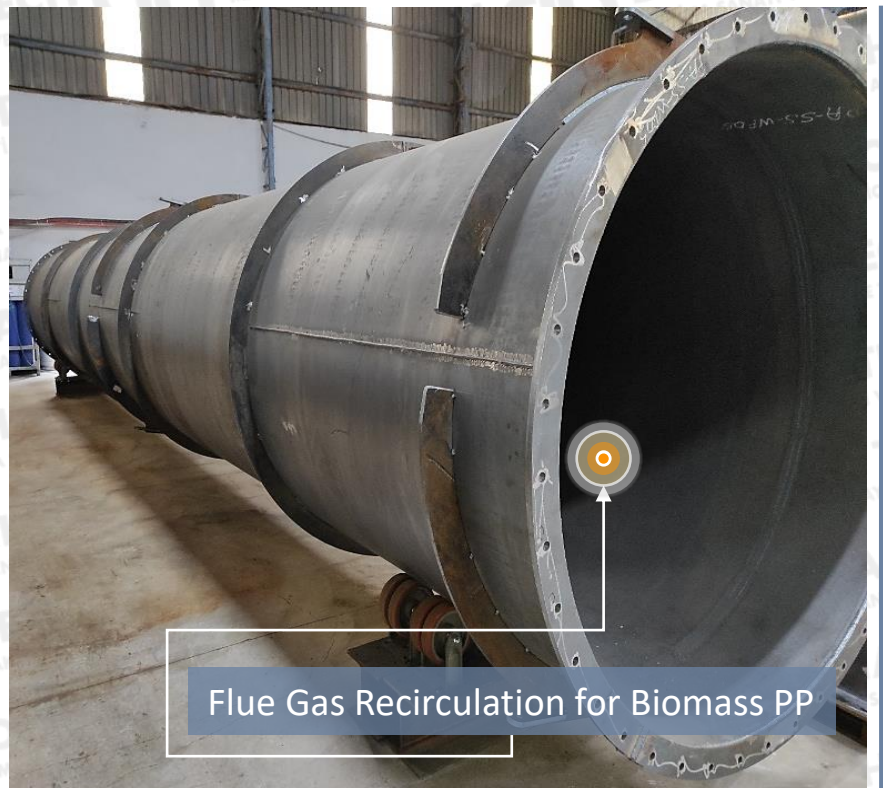
Pressure Compensation Surge Vessel

FLUE GAS RECIRCULATION

Flue Gas Recirculation for Biomass Power Plant



Flue Gas Recirculation for Biomass Power Plant



Flue Gas Recirculation for Biomass PP

DUCTS

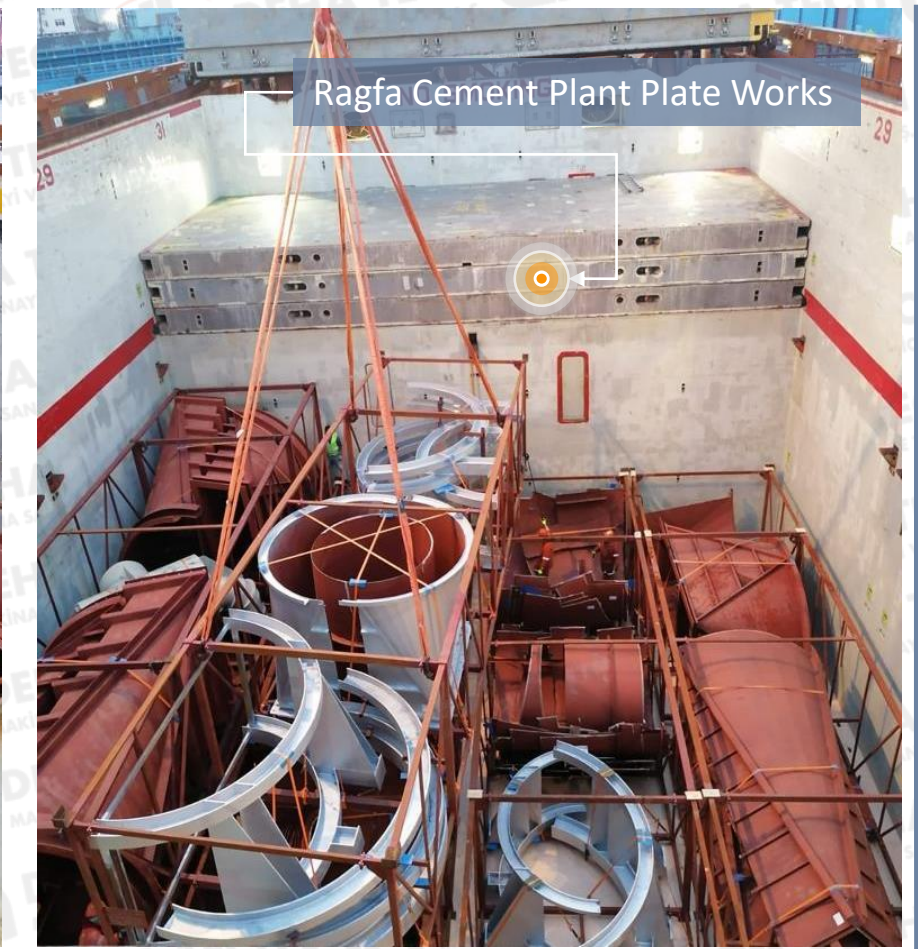




Ragfa Cement Plant Plate Works



Ragfa Cement Plant Plate Works



Ragfa Cement Plant Plate Works

DUCTS

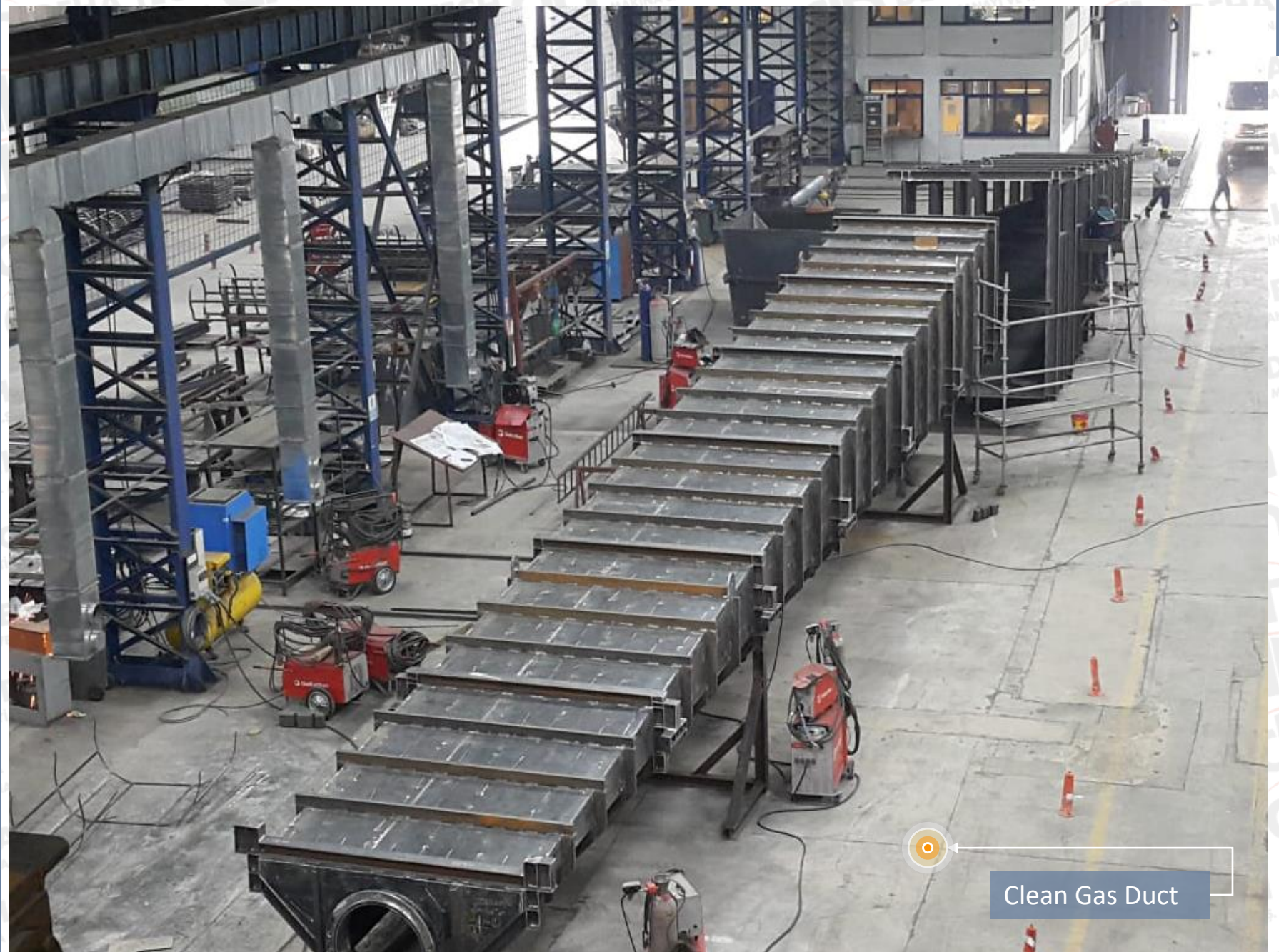


Esindus ACC Ducts



Ragfa Cement Plant Meal Chute

DUCTS



STORAGE TANK PREFABRICATION SERVICES & CAPABILITIES

Cutting



Bending



Machining



Annular Plates



Shell Plates



Welding Edge



Bottom Plates



Roof Plates & Supports



All Other Parts



Dimension Control



Packing Loading



Truck Loading



KHABAT THERMAL POWER PLANT

Fuel Oil and Diesel Storage Tank Farm



Limestone Storage Silo



KHABAT THERMAL POWER PLANT



KHABAT THERMAL POWER PLANT

Fuel Oil and Diesel Storage Tank Farm



Fuel Oil and Diesel Storage Tank Farm

KHABAT THERMAL POWER PLANT

Fuel Oil and Diesel Storage Tank Farm



Limestone Storage Silo

Fuel Oil and Diesel Storage Tank Farm



KHABAT THERMAL POWER PLANT

Fuel Oil Emergency Tank

Diesel Oil Tank

Fuel Oil Tank

Fuel Oil and Diesel Storage Tank Farm

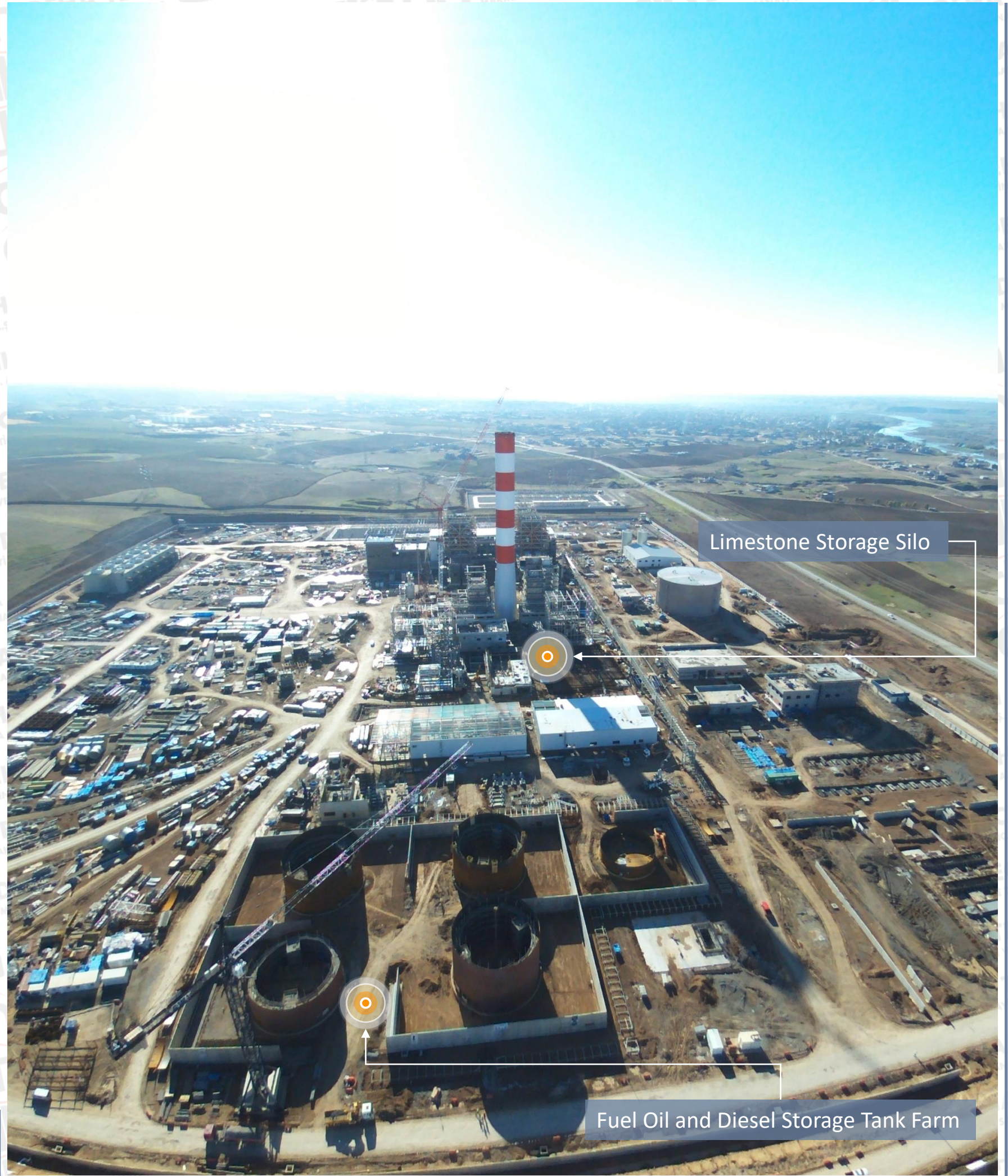
Limestone Storage Silo



KHABAT THERMAL POWER PLANT



KHABAT THERMAL POWER PLANT



Limestone Storage Silo

Fuel Oil and Diesel Storage Tank Farm

NAINAWA 750MW GAS TURBINE PP

Nainawa 750 MW Gas Turbine PP Tank Farm



Works Completed by Deha Tech

NAINAWA 750MW GAS TURBINE PP



NAINAWA 750MW GAS TURBINE PP



NAINAWA 750MW GAS TURBINE PP



NAINAWA 750MW GAS TURBINE PP

Nainawa 750 MW Gas Turbine PP Tank Farm

Fuel & Fire Fighting System Piping

Raw Water Tank

Fire Water Tank

Raw Heavy Fuel Oil Tank

Demineralized Water Tank

Treated Heavy Fuel Oil Tank

Light Distillate Oil Storage Tank

Heavy Fuel-Oil Certification Tank

GARRI-3 SCPP TANK FARM & FUEL UNLOADING STATIONS

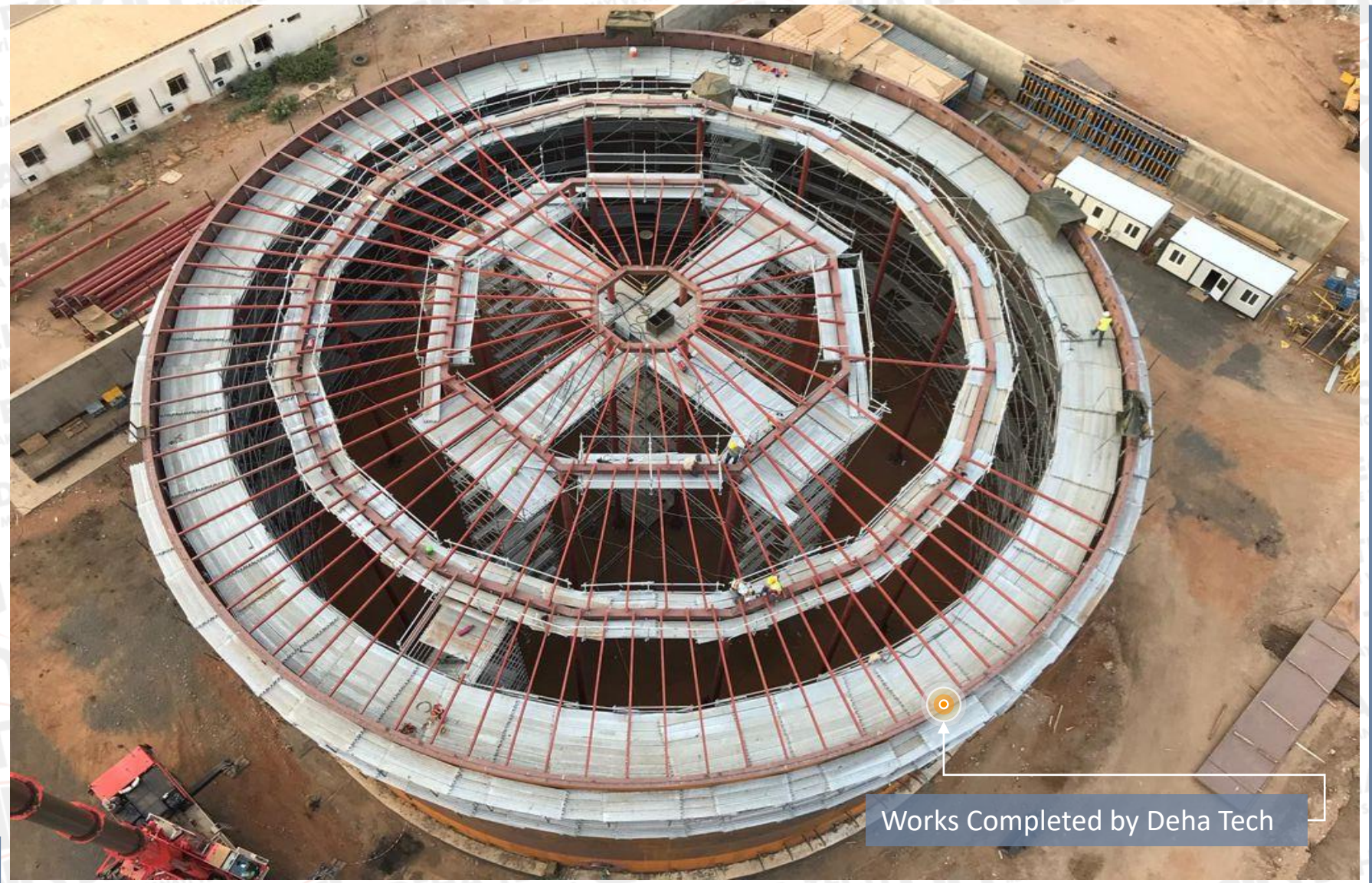


Garri 3 - 750 MW SCPP Heavy Fuel Oil Tank



Works Completed by Deha Tech

GARRI-3 SCPP TANK FARM & FUEL UNLOADING STATIONS



GARRI-3 SCPP TANK FARM & FUEL UNLOADING STATIONS



GARRI-3 SCPP TANK FARM & FUEL UNLOADING STATIONS

Garri 3 - 750 MW SCPP Heavy Fuel Oil Tanks



Works Completed by Deha Tech



GARRI-3 SCPP TANK FARM & FUEL UNLOADING STATIONS

Garri 3 - 750 MW SCPP Heavy Fuel Oil Tank



Fuel Unloading Station



Garri 3 - 750 MW SCPP Heavy Fuel Oil Tank

900 MW ERZIN CCP PLANT



900 MW Erzin CCP Tank Farm



Works Completed by Deha Tech

900 MW ERZIN CCP PLANT



Works Completed by Deha Tech



900 MW Erzin CCPP Tank Farm

900 MW ERZIN CCP PLANT



Works Completed by Deha Tech

24 03 2013



900 MW Erzin CCPP Tank Farm

900 MW ERZIN CCP PLANT

900 MW Erzin Combined Cycle Power Plant

Service and Fire water Tank

Demineralized Water Tank

Condensate Water Tank

Desalinated Water Tank

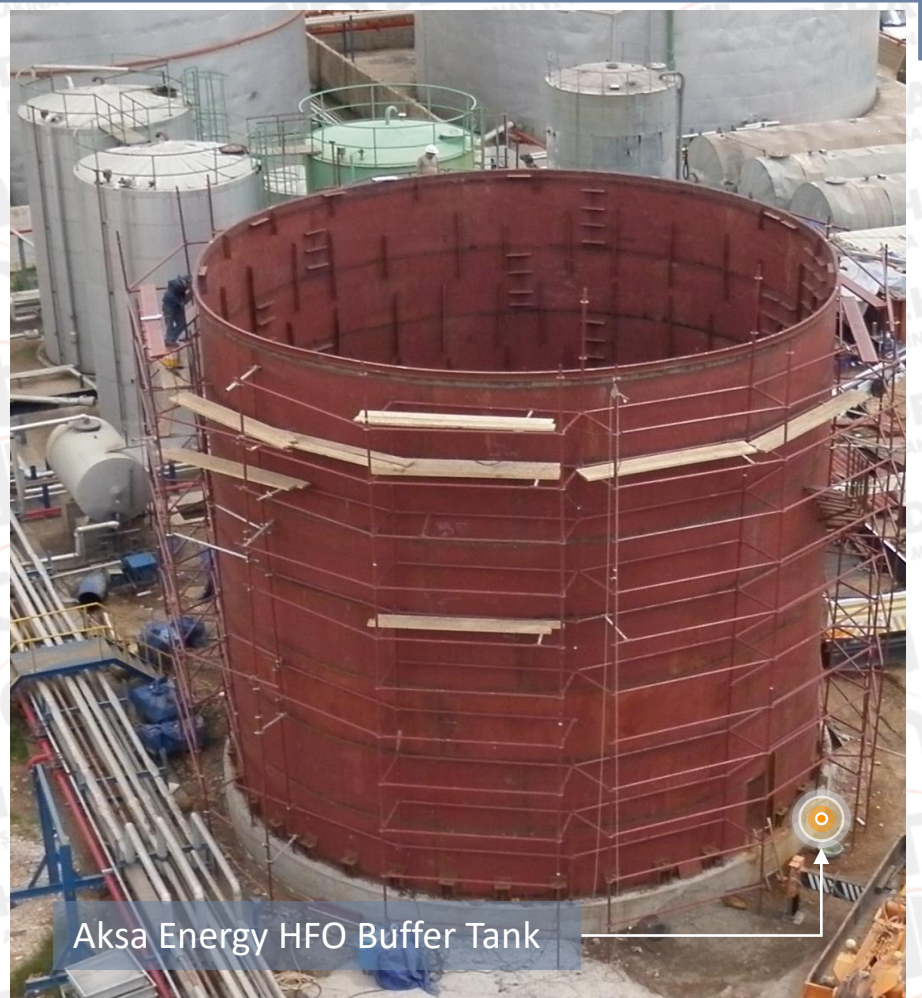
Potable Water Tank

Filtered Water Tank



900 MW Erzin CCPP Tank Farm

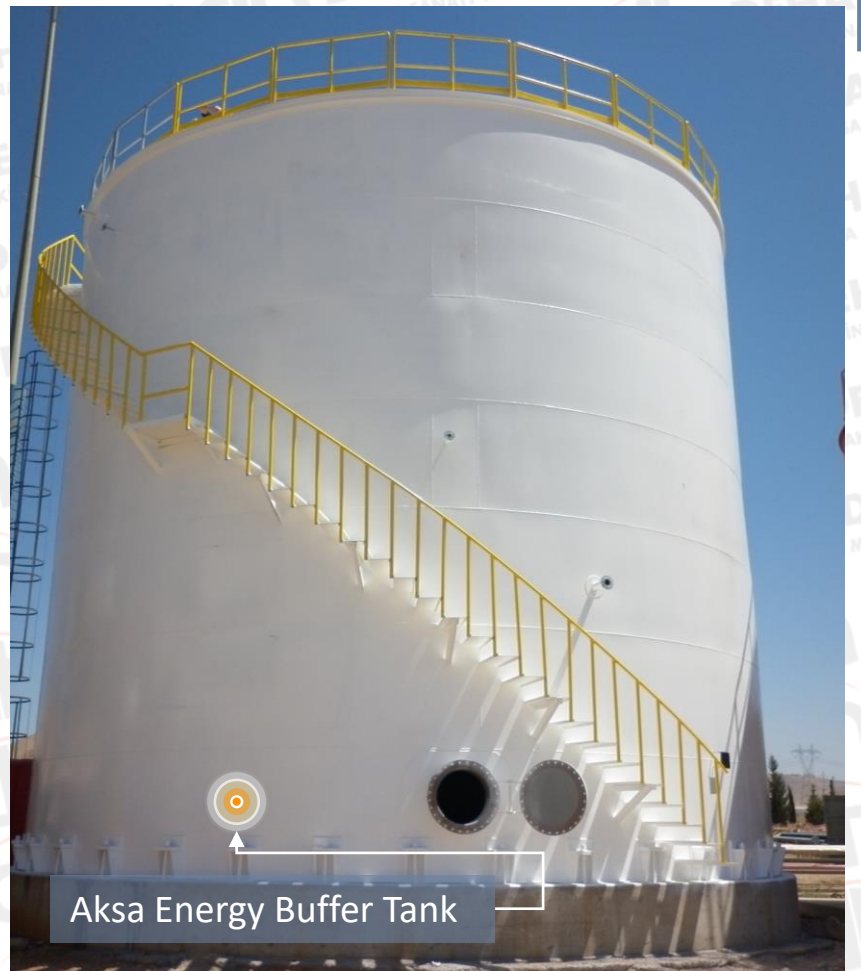
AKSA ENERGY POWER PLANT



AKSA ENERGY POWER PLANT



Works Completed by Deha Tech



Aksa Energy Buffer Tank



LO Service Tank



LO Service Tank

HAMITABAT WATER STORAGE TANK



Hamitabat Demineralized Water Storage Tanks

HAMITABAT WATER STORAGE TANK



Hamitabat Demineralized Water Storage Tanks

Storage Tanks Insulation Works



Hamitabat Demineralized Water Storage Tanks

HAMITABAT WATER STORAGE TANK

Hamitabat Demineralized Water Storage Tanks



Hamitabat Demineralized Water Storage Tanks



HAMITABAT WATER STORAGE TANK

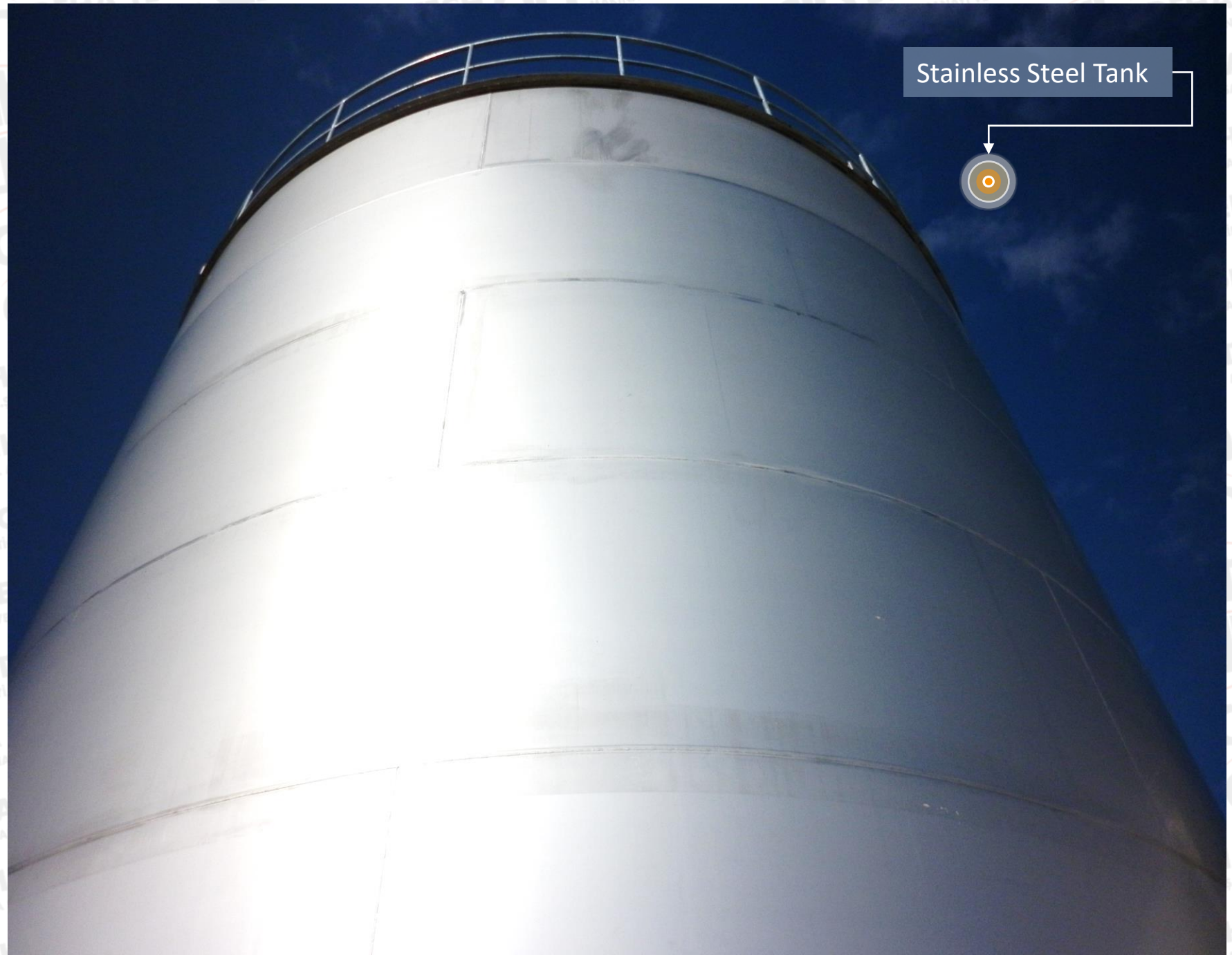


Hamitabat Demineralized Water Storage Tanks

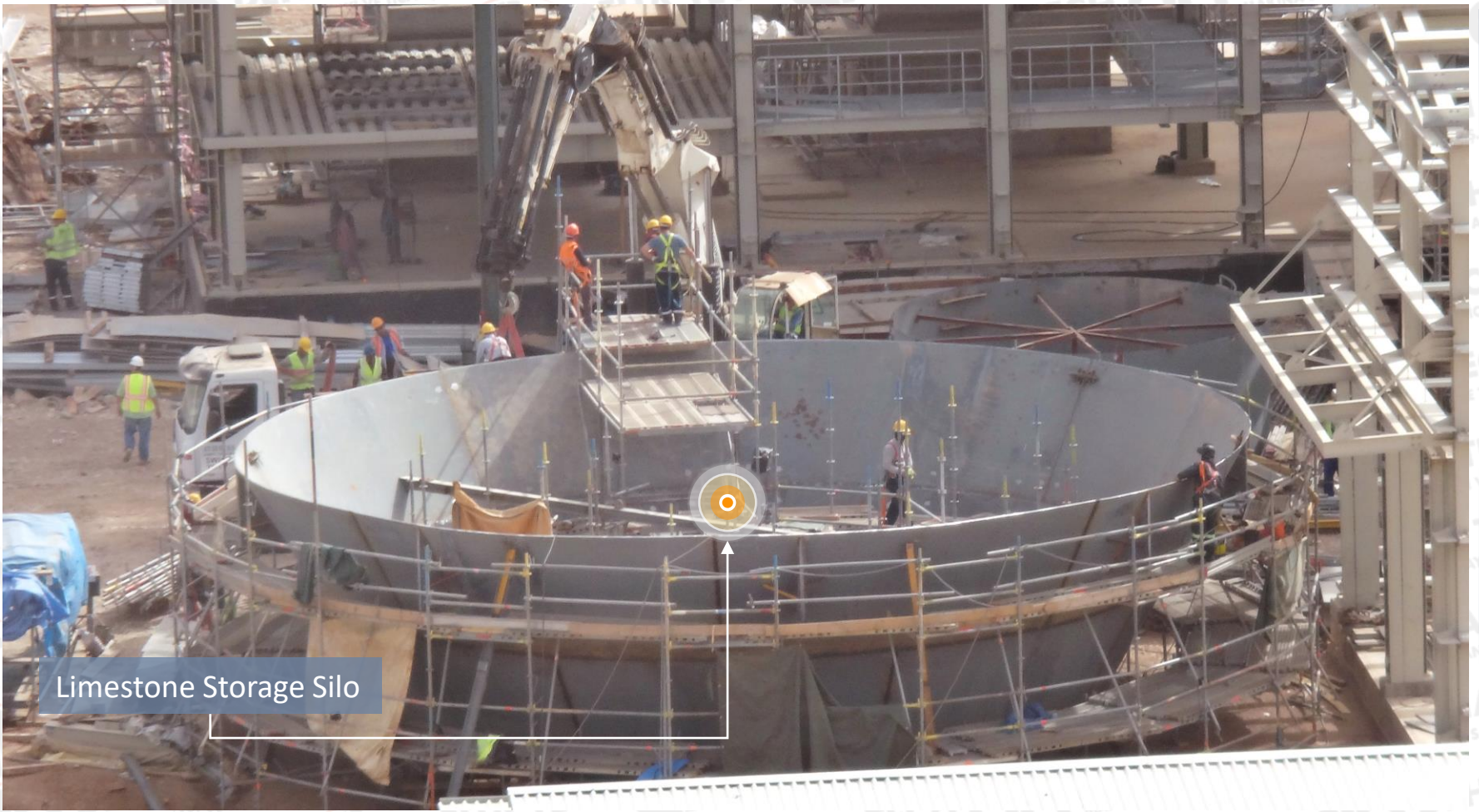


Hamitabat Demineralized Water Storage Tanks

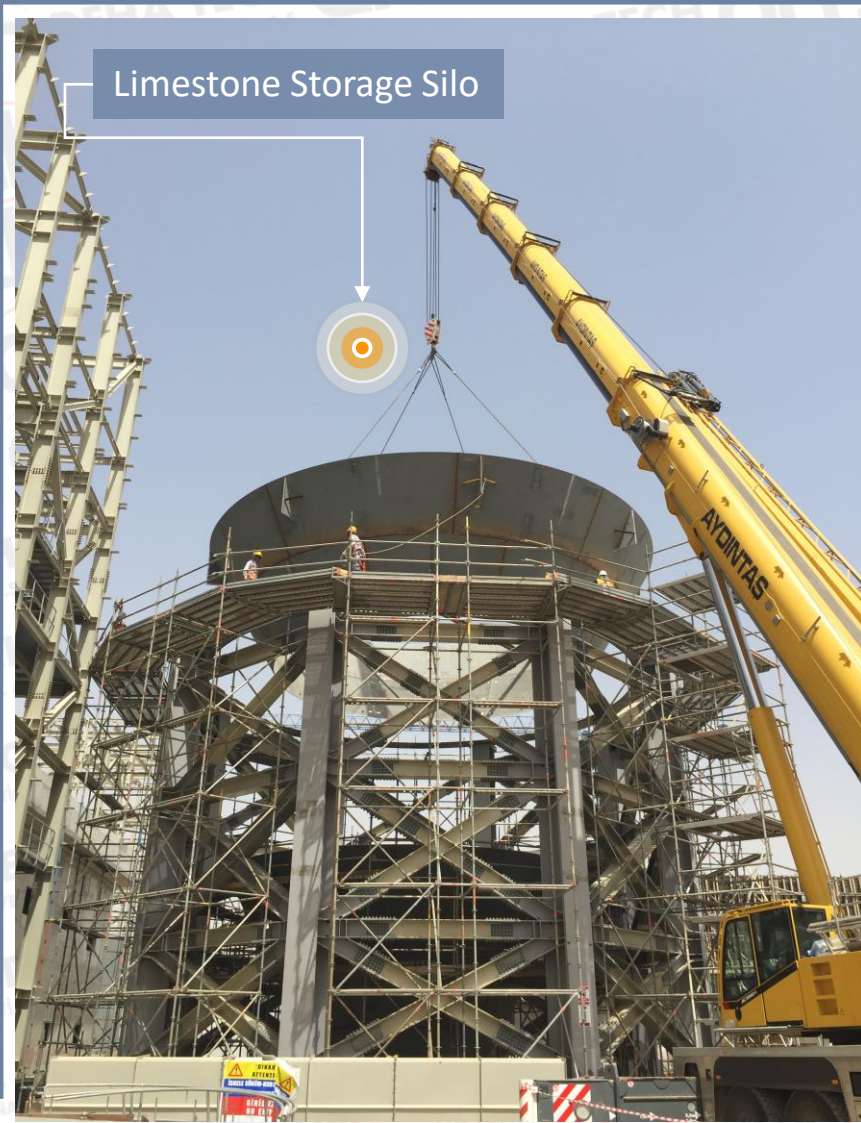
STAINLESS STEEL TANK



KHABAT THERMAL POWER PLANT



KHABAT THERMAL POWER PLANT



KHABAT THERMAL POWER PLANT



Limestone Storage Silo

SILO



Lime Silo



Residue Silo

SILO

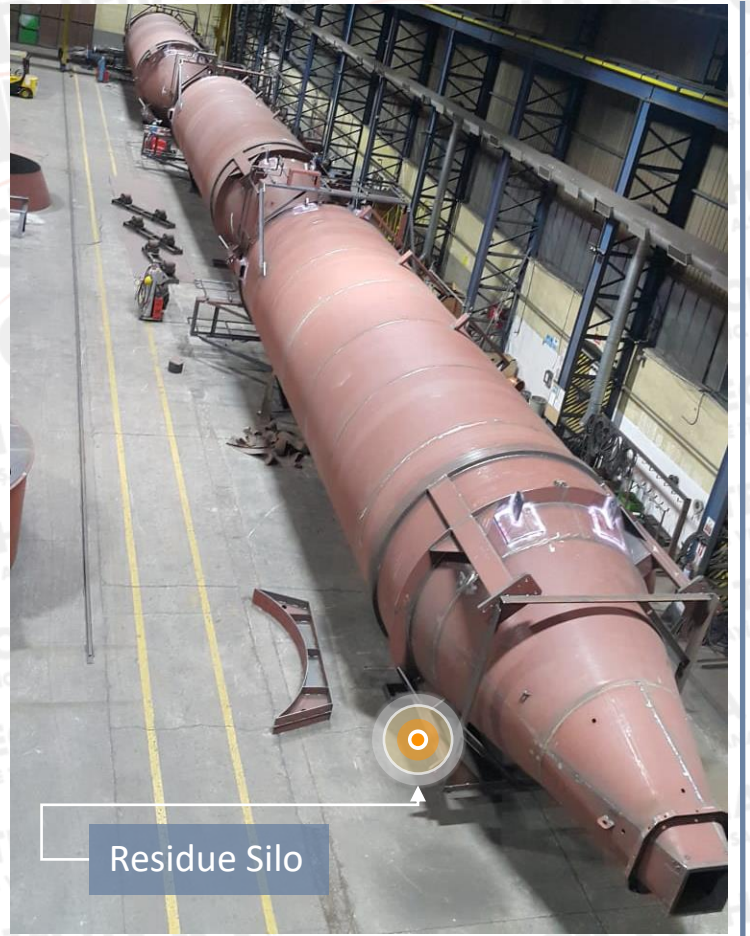


SILO

Residue Silo



Residue Silo



Residue Silo

SILO

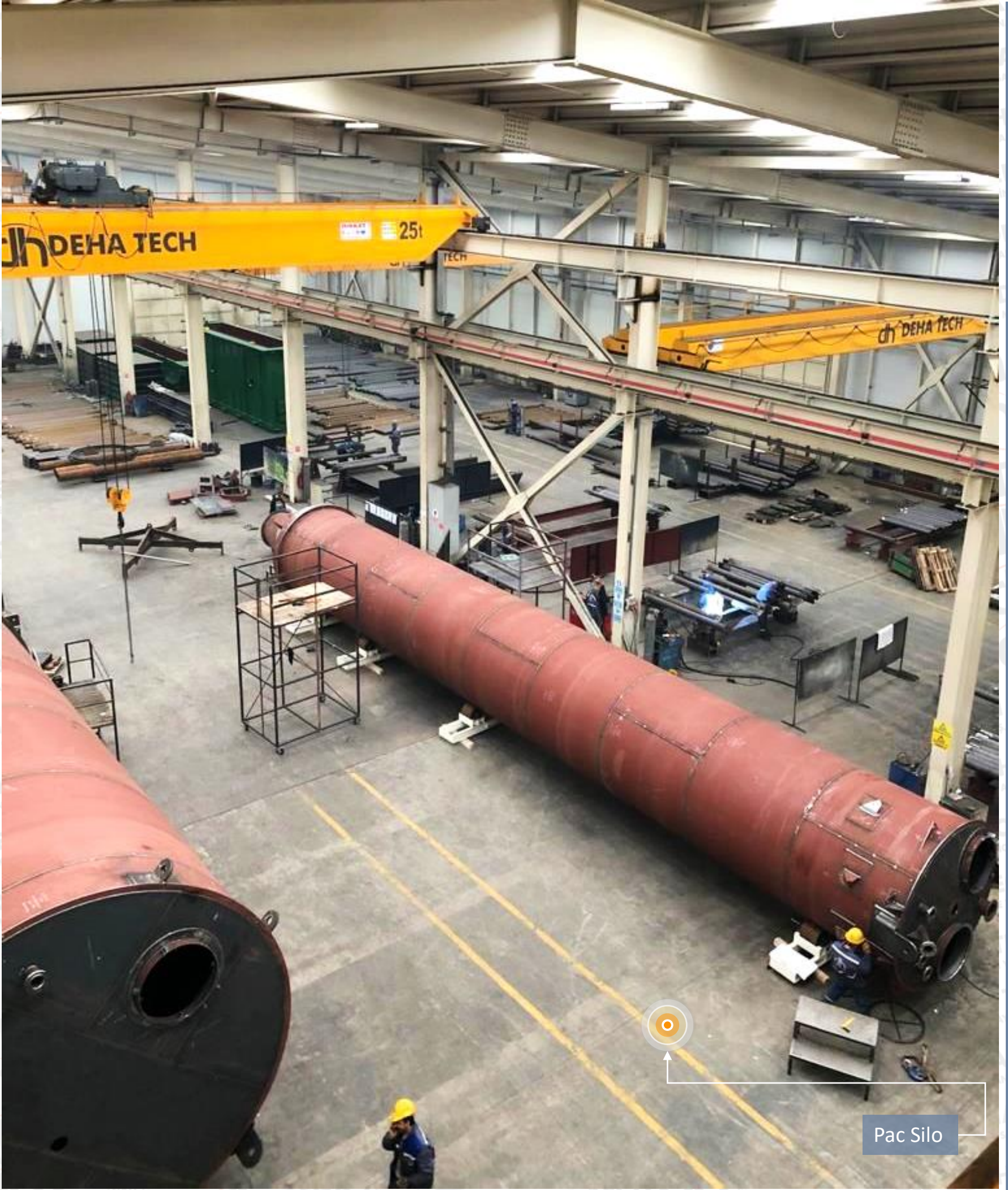


Pack Silo



Pack Silo

SILO



Pac Silo

SILO



SILO



Lime Silo



Residue Silo

SILO



SILO



SILO



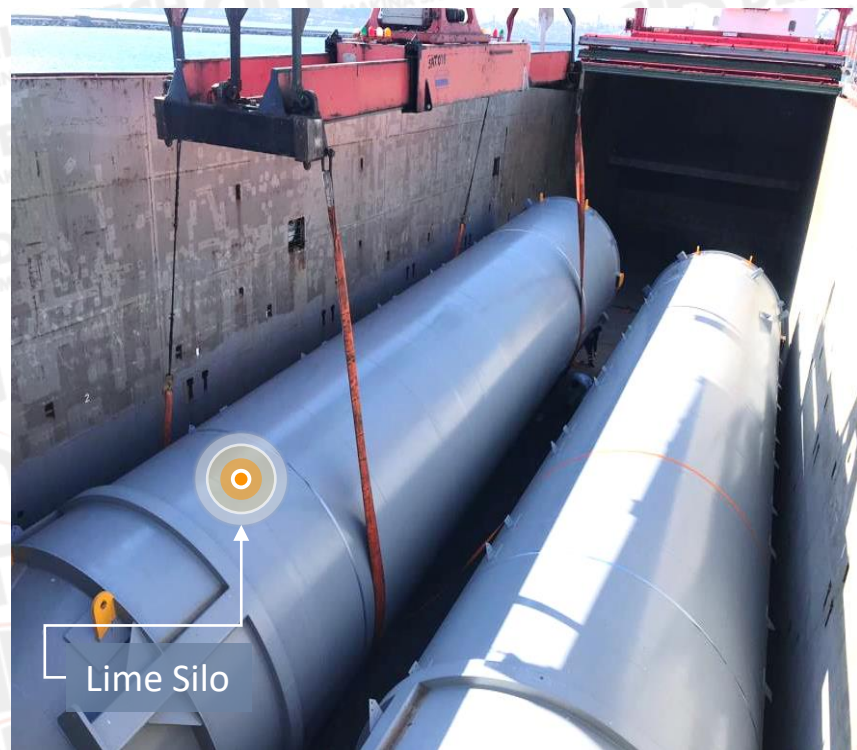
SILO



SILO



Lime Silo



Lime Silo



Lime Silo

SILO



Lime Silo



Lime Silo

SILO



SILO

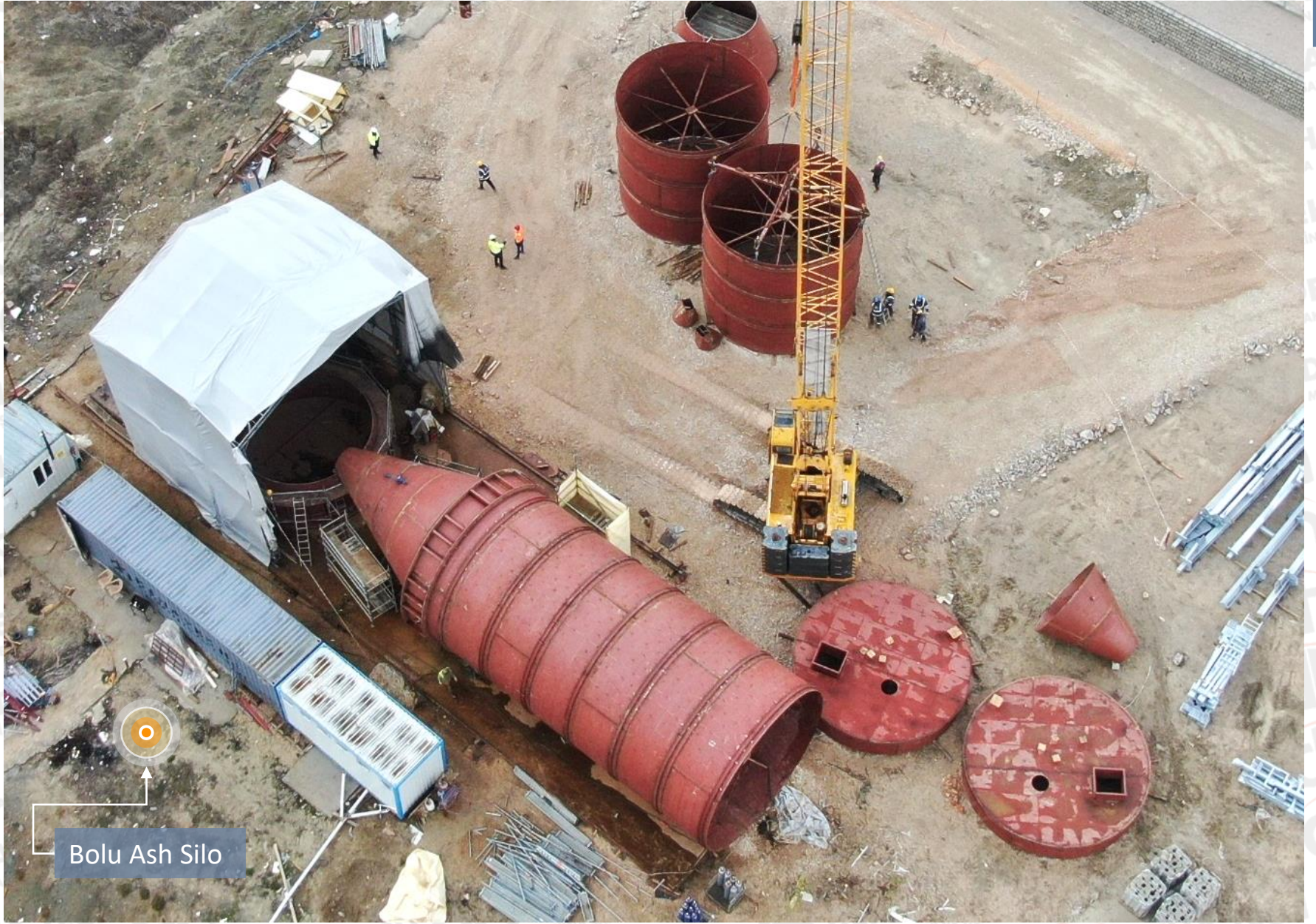


Bolu Ash Silo



Bolu Ash Silo

SILO



Bolu Ash Silo



Bolu Ash Silo

SILO



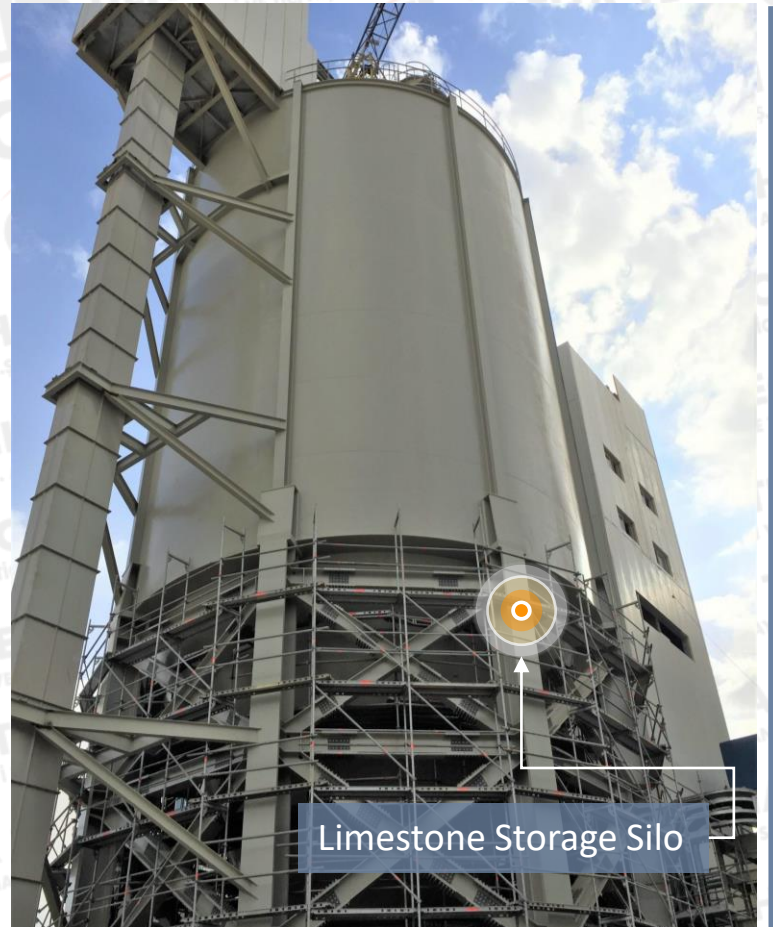
SILO



Bolu Ash Silo



Ferrite and Coal Silo



Limestone Storage Silo

SILO



SILO



Bolu Ash Silo

Process Equipment



Bolu Ash Silo

Steel Structure

SILO

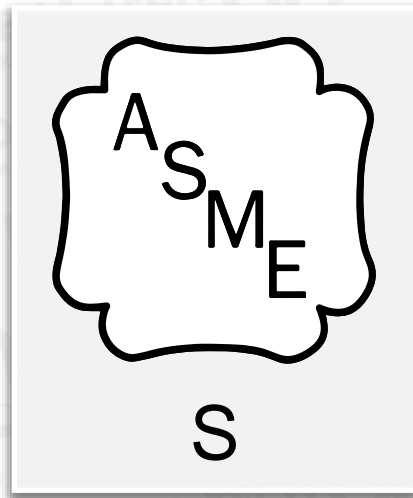
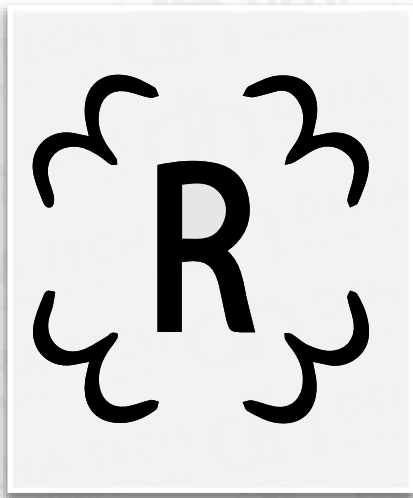
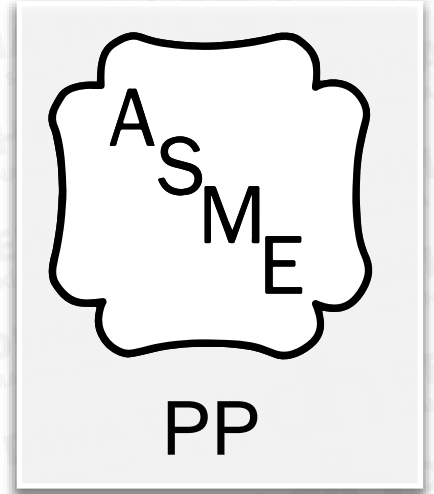
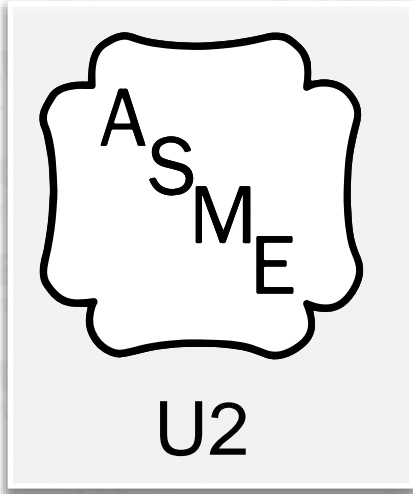
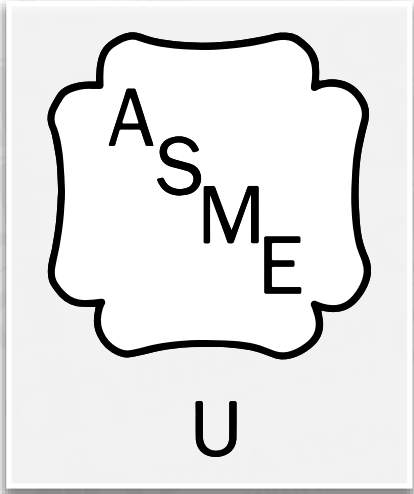
Active Carbon Reactor

Conditioning Tower

Lead Slag Silo



OUR CERTIFICATES



ASME CERTIFICATES

The American Society of Mechanical Engineers



CERTIFICATE OF AUTHORIZATION

The named company is authorized by The American Society of Mechanical Engineers (ASME) for the scope of activity shown below in accordance with the applicable rules of the ASME Boiler and Pressure Vessel Code. The use of the ASME Single Certification Mark and the authority granted by this Certificate of Authorization are subject to the provisions of the agreement set forth in the application. Any construction stamped with the ASME Single Certification Mark shall have been built strictly in accordance with the provisions of the ASME Boiler and Pressure Vessel Code.

COMPANY:

DEHA TECH BASINÇLI KAPLAR ve TANK SANAYİ TİCARET A.Ş.
Barış Mah. Koşuyolu Cad. No:23/A
Gebze
Kocaeli 41400
Turkey

SCOPE:

Manufacture of pressure vessels at the above location and field sites controlled by the above location (This authorization does not cover impregnated graphite)

AUTHORIZED: January 14, 2021
EXPIRES: January 14, 2024
CERTIFICATE NUMBER: 59140

Board Chair, Conformity Assessment

Managing Director, Conformity Assessment

The American Society of Mechanical Engineers



CERTIFICATE OF AUTHORIZATION

The named company is authorized by The American Society of Mechanical Engineers (ASME) for the scope of activity shown below in accordance with the applicable rules of the ASME Boiler and Pressure Vessel Code. The use of the ASME Single Certification Mark and the authority granted by this Certificate of Authorization are subject to the provisions of the agreement set forth in the application. Any construction stamped with the ASME Single Certification Mark shall have been built strictly in accordance with the provisions of the ASME Boiler and Pressure Vessel Code.

COMPANY:

DEHA TECH BASINÇLI KAPLAR ve TANK SANAYİ TİCARET A.Ş.
Barış Mah. Koşuyolu Cad. No:23/A
Gebze
Kocaeli 41400
Turkey

SCOPE:

Manufacture of Class 1 and Class 2 pressure vessels at the above location and field sites controlled by the above location

AUTHORIZED: January 14, 2021
EXPIRES: January 14, 2024
CERTIFICATE NUMBER: 59141

Board Chair, Conformity Assessment

Managing Director, Conformity Assessment

The American Society of Mechanical Engineers



CERTIFICATE OF AUTHORIZATION

The named company is authorized by The American Society of Mechanical Engineers (ASME) for the scope of activity shown below in accordance with the applicable rules of the ASME Boiler and Pressure Vessel Code. The use of the ASME Single Certification Mark and the authority granted by this Certificate of Authorization are subject to the provisions of the agreement set forth in the application. Any construction stamped with the ASME Single Certification Mark shall have been built strictly in accordance with the provisions of the ASME Boiler and Pressure Vessel Code.

COMPANY:

DEHA TECH BASINÇLI KAPLAR ve TANK SANAYİ TİCARET A.Ş.
Barış Mah. Koşuyolu Cad. No:23/A
Gebze
Kocaeli 41400
Turkey

SCOPE:

Manufacture and assembly of power boilers at the above location and field sites controlled by the above location

AUTHORIZED: January 14, 2021
EXPIRES: January 14, 2024
CERTIFICATE NUMBER: 59139

Board Chair, Conformity Assessment

Managing Director, Conformity Assessment

The American Society of Mechanical Engineers



CERTIFICATE OF AUTHORIZATION

The named company is authorized by The American Society of Mechanical Engineers (ASME) for the scope of activity shown below in accordance with the applicable rules of the ASME Boiler and Pressure Vessel Code. The use of the ASME Single Certification Mark and the authority granted by this Certificate of Authorization are subject to the provisions of the agreement set forth in the application. Any construction stamped with the ASME Single Certification Mark shall have been built strictly in accordance with the provisions of the ASME Boiler and Pressure Vessel Code.

COMPANY:

DEHA TECH BASINÇLI KAPLAR ve TANK SANAYİ TİCARET A.Ş.
Barış Mah. Koşuyolu Cad. No:23/A
Gebze
Kocaeli 41400
Turkey

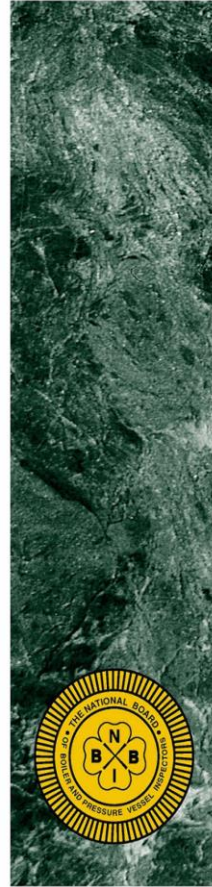
SCOPE:

Fabrication and assembly of pressure piping at the above location and field sites controlled by the above location

AUTHORIZED: January 14, 2021
EXPIRES: January 14, 2024
CERTIFICATE NUMBER: 59138

Board Chair, Conformity Assessment

Managing Director, Conformity Assessment



THE NATIONAL BOARD OF BOILER & PRESSURE VESSEL INSPECTORS

Certificate of Authorization



This is to certify that

DEHA TECH BASINÇLI KAPLAR ve TANK SANAYİ TİCARET A.Ş.
Barış Mah. Koşuyolu Cad. No:23/A
Gebze - Kocaeli 41400
Turkey

Acceptable Abbreviation: DEHA TECH

is authorized to use the R Symbol in accordance with the provisions of the National Board Inspection Code and NB-415, Accreditation of "R" Repair Organizations.

All activities within the scope of this Authorization shall be controlled by the above location.

The scope of this Authorization is limited to:

Metallic
Repairs and Alterations
At
Shop and Field Locations

Certification Number: 11599

Issue Date: January 11, 2021
Expiration Date: January 10, 2024

Executive Director

QUALITY CERTIFICATES

FIRST QUALITY CERTIFICATION



FIRST QUALITY CERTIFICATION

CERTIFICATE

This certificate is granted to the organization,
DEHA TECH BASINÇLI KAPLAR VE TANK SANAYİ TİCARET ANONİM ŞİRKETİ

Müeyyetzade Mahallesi Kemeralı Caddesi Adıyaman Han Apartman No:28/4 Beyoğlu / İstanbul / Türkiye
Şube 1: Barış Mahallesi Koşu Yolu Caddesi No:23 Gebze/ Kocaeli / Türkiye
Şube 2:Tatlıkuyu Mahallesi 1319 Sokak No:9 Gebze / Kocaeli / Türkiye

DESIGN, MANUFACTURE AND INSTALLATION OF PRESSURE VESSELS, HEAT EXCHANGERS, PROCESS COLUMNS, REACTORS, STORAGE TANKS, SPHERICAL TANKS, POWER BOILERS, BOILER EXTERNAL PIPINGS, HEAVY FABRICATED STEELWORKS, CRYOGENIC TANKS AND MANUFACTURE OF TURBINE HOUSINGS AND FOREIGN TRADE, CUSTOMS CLEARANCE, LOGISTICS, STORAGE, MANAGEMENT AND ADMINISTRATION ORGANIZATION FOR THE MANUFACTURING AND INSTALLATION ACTIVITIES, AS WELL AS OPERATIONS RELATING TO SUCH ACTIVITIES, PROVISION OF SERVICE AND PRODUCTION IN CONNECTION

EA 17, 18
according to the scope,
ISO 9001:2015
to certify that Quality Management System in accordance with standard's clauses is established and being implemented.

First Date of Issue : 23.09.2020
Date of Issue : 22.09.2021
Certificate Period : 3 Years
Reissue Due Date : 22.09.2022
Certificate No : 01.20.8863.114462.D



First Quality Certification System Certificate Approved
Maltepe / İstanbul / Türkiye




Deutsche Akkreditierungsstelle
D-2M-15276-01-00

FOC India & Head Office
FOC First Quality Certification Pvt. Ltd.
303/37, Sector-12, Phase-3/4 - 134109, Haryana, India
T: +91 172 8020255 F: +91 172 4540201
www.fqcet.com info@fqcet.com

FOC Turkey & Critical Location
FOC Üstün Arama Belgelendirme ve Eği. Hiz. A.Ş.
Ceviz Mah. Tarım Cad. No:12 Kat:0-28-29 Maltepe / İstanbul / Türkiye
T: +90 216 444 21 41 / +90 216 407 80 88 F: +90 216 407 80 89
www.fqcet.com info@fqcet.com

Bu belge, müşterinin FOC'nin kurullarına ve diğerlerine performansını doğrulamaya yarar. Sertifikayı geçersiz kılan durumlar FOC'nin internet sitesinde belirtilmiştir. Bu belge, müşterinin FOC'nin kurullarına ve diğerlerine performansını doğrulamaya yarar. Sertifikayı geçersiz kılan durumlar FOC'nin internet sitesinde belirtilmiştir. This document shall remain valid as long as the customer obeys FOC rules and terms of the contract. Certificate validity may be checked on FOC website.

FIRST QUALITY CERTIFICATION



FIRST QUALITY CERTIFICATION

CERTIFICATE

This certificate is granted to the organization,
DEHA TECH BASINÇLI KAPLAR VE TANK SANAYİ TİCARET ANONİM ŞİRKETİ

Müeyyetzade Mahallesi Kemeralı Caddesi Adıyaman Han Apartman No:28/4 Beyoğlu / İstanbul / Türkiye
Şube 1: Barış Mahallesi Koşu Yolu Caddesi No:23 Gebze/ Kocaeli / Türkiye
Şube 2:Tatlıkuyu Mahallesi 1319 Sokak No:9 Gebze / Kocaeli / Türkiye

DESIGN, MANUFACTURE AND INSTALLATION OF PRESSURE VESSELS, HEAT EXCHANGERS, PROCESS COLUMNS, REACTORS, STORAGE TANKS, SPHERICAL TANKS, POWER BOILERS, BOILER EXTERNAL PIPINGS, HEAVY FABRICATED STEELWORKS, CRYOGENIC TANKS AND MANUFACTURE OF TURBINE HOUSINGS AND FOREIGN TRADE, CUSTOMS CLEARANCE, LOGISTICS, STORAGE, MANAGEMENT AND ADMINISTRATION ORGANIZATION FOR THE MANUFACTURING AND INSTALLATION ACTIVITIES, AS WELL AS OPERATIONS RELATING TO SUCH ACTIVITIES, PROVISION OF SERVICE AND PRODUCTION IN CONNECTION

EA 17, 18
according to the scope,
ISO 45001:2018
to certify that Occupational Health and Safety System in accordance with standard's clauses is established and being implemented.

First Date of Issue : 23.09.2021
Date of Issue : 23.09.2021
Certificate Period : 3 Years
Reissue Due Date : 22.09.2022
Certificate No : 03.21.8863.0486.D



First Quality Certification System Certificate Approved
Maltepe / İstanbul / Türkiye



Deutsche Akkreditierungsstelle
D-2M-15276-01-00

FOC India & Head Office
FOC First Quality Certification Pvt. Ltd.
303/37, Sector-12, Phase-3/4 - 134109, Haryana, India
T: +91 172 8020255 F: +91 172 4540201
www.fqcet.com info@fqcet.com

FOC Turkey & Critical Location
FOC Üstün Arama Belgelendirme ve Eği. Hiz. A.Ş.
Ceviz Mah. Tarım Cad. No:12 Kat:0-28-29 Maltepe / İstanbul / Türkiye
T: +90 216 444 21 41 / +90 216 407 80 88 F: +90 216 407 80 89
www.fqcet.com info@fqcet.com

Bu belge, müşterinin FOC'nin kurullarına ve diğerlerine performansını doğrulamaya yarar. Sertifikayı geçersiz kılan durumlar FOC'nin internet sitesinde belirtilmiştir. This document shall remain valid as long as the customer obeys FOC rules and terms of the contract. Certificate validity may be checked on FOC website.

FIRST QUALITY CERTIFICATION



FIRST QUALITY CERTIFICATION

CERTIFICATE

This certificate is granted to the organization,
DEHA TECH BASINÇLI KAPLAR VE TANK SANAYİ TİCARET ANONİM ŞİRKETİ

Müeyyetzade Mahallesi Kemeralı Caddesi Adıyaman Han Apartman No:28/4 Beyoğlu / İstanbul / Türkiye
Şube 1: Barış Mahallesi Koşu Yolu Caddesi No:23 Gebze/ Kocaeli / Türkiye
Şube 2:Tatlıkuyu Mahallesi 1319 Sokak No:9 Gebze / Kocaeli / Türkiye

DESIGN, MANUFACTURE AND INSTALLATION OF PRESSURE VESSELS, HEAT EXCHANGERS, PROCESS COLUMNS, REACTORS, STORAGE TANKS, SPHERICAL TANKS, POWER BOILERS, BOILER EXTERNAL PIPINGS, HEAVY FABRICATED STEELWORKS, CRYOGENIC TANKS AND MANUFACTURE OF TURBINE HOUSINGS AND FOREIGN TRADE, CUSTOMS CLEARANCE, LOGISTICS, STORAGE, MANAGEMENT AND ADMINISTRATION ORGANIZATION FOR THE MANUFACTURING AND INSTALLATION ACTIVITIES, AS WELL AS OPERATIONS RELATING TO SUCH ACTIVITIES, PROVISION OF SERVICE AND PRODUCTION IN CONNECTION

EA 17, 18
according to the scope,
ISO 14001:2015
to certify that Environmental Management System in accordance with standard's clauses is established and being implemented.

First Date of Issue : 23.09.2020
Date of Issue : 22.09.2021
Certificate Period : 3 Years
Reissue Due Date : 22.09.2022
Certificate No : 02.20.8863.7601.D



First Quality Certification System Certificate Approved
Maltepe / İstanbul / Türkiye





Deutsche Akkreditierungsstelle
D-2M-15276-01-00

FOC India & Head Office
FOC First Quality Certification Pvt. Ltd.
303/37, Sector-12, Phase-3/4 - 134109, Haryana, India
T: +91 172 8020255 F: +91 172 4540201
www.fqcet.com info@fqcet.com

FOC Turkey & Critical Location
FOC Üstün Arama Belgelendirme ve Eği. Hiz. A.Ş.
Ceviz Mah. Tarım Cad. No:12 Kat:0-28-29 Maltepe / İstanbul / Türkiye
T: +90 216 444 21 41 / +90 216 407 80 88 F: +90 216 407 80 89
www.fqcet.com info@fqcet.com

Bu belge, müşterinin FOC'nin kurullarına ve diğerlerine performansını doğrulamaya yarar. Sertifikayı geçersiz kılan durumlar FOC'nin internet sitesinde belirtilmiştir. This document shall remain valid as long as the customer obeys FOC rules and terms of the contract. Certificate validity may be checked on FOC website.

ZERTIFIKAT | CERTIFICATE | CERTIFICADO | СЕРТИФИКАТ | 證書 | 인증서



TÜV AUSTRIA

WELDING CERTIFICATE

No.: 0408-CPR-TA02788

Manufacturer	DEHA TECH MAKİNA SAN. VE TİC. A.Ş. Kemeralı Cad. No: 28 Kat:3 34425 Karaköy / İSTANBUL / TÜRKİYE
Factories	1. Barış Mah. Koşuyolu Cad. No: 23 41400, Gebze, KOCAELİ 2. Tatlıkuyu Mah. 1319 Sok. No:9 Gebze, KOCAELİ 3. Aslanbey Mah. Yeşilievler Sok.No:5, Kartepe, KOCAELİ 4. Arslanbey OSB Mah. 3. Sok. No:12/1 Kartepe, KOCAELİ 5. Ovacık Mah. Ali İslam Sok. No:1 Başiskele, KOCAELİ
Standard	EN 1090-1:2009+A1:2011 EN 1090-2:2018
Execution Classes	Up to EXC 4
Welding Processes (According to ISO 4063)	111 – Manual Metal Arc Welding 121 – Submerged Arc Welding with one wire electrodes 135 – Metal Active Gas Welding 136 – Metal Active Gas Welding (Flux Cored) 141 – Tungsten Inert Gas Welding 131 – Metal Inert Gas Welding
Parent Metals	Mat. Group 1.1, 1.2, 3.2, acc. To EN 1090-2, Tab. 283 Mat. Group 8.1 acc. To EN 1090-2, Table 4
Responsible Welding Coordinator	Factories (3-4-5) Hakan Doğan (WE), born: 30.12.1978 Factories (1-2) Fatih Şahin (WE), born: 01.03.1985
Deputies	Factories (3-4-5) Adnan Türkülmaz (WE), born: 14.06.1989 Factories (1-2) Kerim Akbaş (WE), born: 10.06.1992
Confirmation	It is confirmed that all procedures for the execution and supervision of welding work are available.
Remarks	This welding certificate is only valid within the scope of and in connection with FPC Certificate No.: 0408-CPR-TA02788.
Valid From	28.02.2019 (First Day of Issue)
Next Surveillance	27.02.2022


Leonding, 31.03.2021
Date & Place of Issue

Dipl.-Ing. Alexander Masthak
Certification Representative

TÜV AUSTRIA SERVICES GMBH, Deutschstraße 10/A-1230 Wien, www.tuv.at

ZERTIFIKAT | CERTIFICATE | CERTIFICADO | СЕРТИФИКАТ | 證書 | 인증서

ZERTIFIKAT | CERTIFICATE | CERTIFICADO | СЕРТИФИКАТ | 證書 | 인증서



TÜV AUSTRIA

CERTIFICATE

of conformity
of the factory production control

No.: 0408-CPR-TA02788

In compliance with Regulation 305/2011/EU of the European Parliament and of the Council of 8th March 2011 (the Construction Products Regulation or CPR), this certificate applies to the construction product

Components for Steel structures

harmonized Standard	execution class	declaration method
EN 1090-1:2009+A1:2011	Load bearing steel components with corrosion protection and structural design up to EXC 4 acc. EN 1090-2	1, 2, 3b and 3a acc. Tab. A.1 of EN 1090-1

produced by or for
DEHA TECH MAKİNA SAN. VE TİC. A.Ş.
Kemeralı Cad. No: 28 Kat:3
34425 Karaköy / İSTANBUL / TÜRKİYE
and produced in the manufacturing plant (s) (additions on page 2)
Factory 1 : Barış Mah. Koşuyolu Cad. No: 23 41400, Gebze, KOCAELİ
Factory 2 : Tatlıkuyu Mah. 1319 Sok. No:9 Gebze, KOCAELİ
Factory 3 : Aslanbey Mah. Yeşilievler Sok.No:5, Kartepe, KOCAELİ
Factory 4 : Arslanbey OSB Mah. 3. Sok. No:12/1 Kartepe, KOCAELİ
Factory 5 : Ovacık Mah. Ali İslam Sok. No:1 Başiskele, KOCAELİ

This certificate attests that all provisions concerning the assessment and verification of consistency of performance described in Annex ZA of the standard (s)

EN 1090-1:2009+A1:2011
under system 2+ are applied and that
the factory production control fulfills all the prescribed requirements set out above.

This certificate was first issued on 28.02.2019 and will remain valid as long as the test methods and/or factory production control requirements included in the harmonized standard, used to assess the performance of the declared characteristics, do not change, and the product, and the manufacturing conditions in the plant are not modified significantly. The next surveillance is due on 27.02.2022.

Leonding 31.03.2021
PLACE DATE

Dipl.-Ing. Alexander Masthak
Certification Representative

TÜV AUSTRIA SERVICES GMBH
Deutschstraße 10
A-1230 Wien

ZERTIFIKAT | CERTIFICATE | CERTIFICADO | СЕРТИФИКАТ | 證書 | 인증서

ZERTIFIKAT | CERTIFICATE | CERTIFICADO | СЕРТИФИКАТ | 證書 | 인증서



TÜV AUSTRIA

CERTIFICATE

The certification body of TÜV AUSTRIA SERVICES GMBH certifies that

DEHA TECH MAKİNA SAN. VE TİC. A.Ş.
Head Office : Kemeralı Cad. No:28 Kat:3
34425 Karaköy, İSTANBUL
Factory 1 : Barış Mah. Koşuyolu Cad. No: 23 41400, Gebze, KOCAELİ
Factory 2 : Tatlıkuyu Mah. 1319 Sok. No:9 Gebze, KOCAELİ
Factory 3 : Aslanbey Mah. Yeşilievler Sok.No:5, Kartepe, KOCAELİ
Factory 4 : Arslanbey OSB Mah. 3. Sok. No:12/1 Kartepe, KOCAELİ
Factory 5 : Ovacık Mah. Ali İslam Sok. No:1 Başiskele, KOCAELİ

has met all necessary quality requirements for welding according to

EN ISO 3834-2

Date of audit: 19.02.2021

This certificate is valid for the following products or service ranges:
Production of Storage Tank, Structural Steel, Silos, Girder Crane, Handrail, Steel Bridge, Pipelines and Pressure Vessels

Date of expiry: 19.02.2022

Certificate no.: HZ-02789-21-TR-HAC

Certification body of
TÜV AUSTRIA SERVICES GMBH
1230 Vienna, Deutschstraße 10, Austria

Leonding, 31.03.2021
Dipl.-Ing. Alexander Masthak
Certification Representative

Failure to meet all these necessary requirements as defined in the annex to this certificate will spoil this document!

ZERTIFIKAT | CERTIFICATE | CERTIFICADO | СЕРТИФИКАТ | 證書 | 인증서

SAFETY FIRST



Health & Safety

Our priority is to maintain the health and safety of our employees and public, to minimise the environmental impact associated with our activities.

Working at Deha Tech means becoming a part of energetic team committed to obtain objectives in international conditions.

We ensure that Deha Tech Group Companies have effective occupational health and safety systems to generate customer confidence and protecting employees.

- ★ Think Safe
- ★ Act Safe
- ★ Stay Safe



MAJOR REFERENCES

Hitachi Zosen
INOVA

SIEMENS
ENERGY

AKSA
ENERJİ

KHD | HUMBOLDT
WEDAG

Schneider
Electric

FERNAS

 RAINPOWER

SPIG

1908
BEDESCHI
PADOVA

HARMONEE

IC Çiçtaş inşaat

Sartech
ENGINEERING

OVIVO
Worldwide Experts in Water Treatment

MARZINC

CLYDE BERGEMANN

GAMA

Tüpraş

POSCO

esindus

ENERCON
ENERGIE FÜR DIE WELT

ÇALIK ENERJİ


thyssenkrupp


TÜBİTAK
MAM


AVIC


İLK
CONSTRUCTION

AREVA

Petrol Ofisi

HAMON

GE

TAI

AET



Deha Tech Headquarters

A: Kemeraltı Caddesi No:28, Pk:34425,
Müeyyetzade Mahallesi, Karaköy / İSTANBUL / TR

W: www.dehatech.com - info@dehatech.com

T: + 90 212 252 48 00

Gebze Factories

1: Barış, Koşuyolu Cd. No:23, Pk: 41400
Gebze/Kocaeli

2: Tatlıkuyu, 1319. Sk. No:9, Pk: 41400
Gebze/Kocaeli



THANK YOU

Click on the logos below to learn more about us

