

MACHINERY INDUSTRY

www.dehatech.com



Deha Tech undertakes a wide range of fabrication and assembly projects across many industries, provides a fully comprehensive service from high volume work to small scale production jobs.

ABOUT DEHA TECH

Deha Tech is an International acting EPC (Engineering, Procurement and Construction) Company committed to obtain the highest standard of client satisfaction and providing long-term business relations with its clients. Since 2009 we're proud to have completed more than 100 projects and work every day to be a global partner with the promise of excellence.

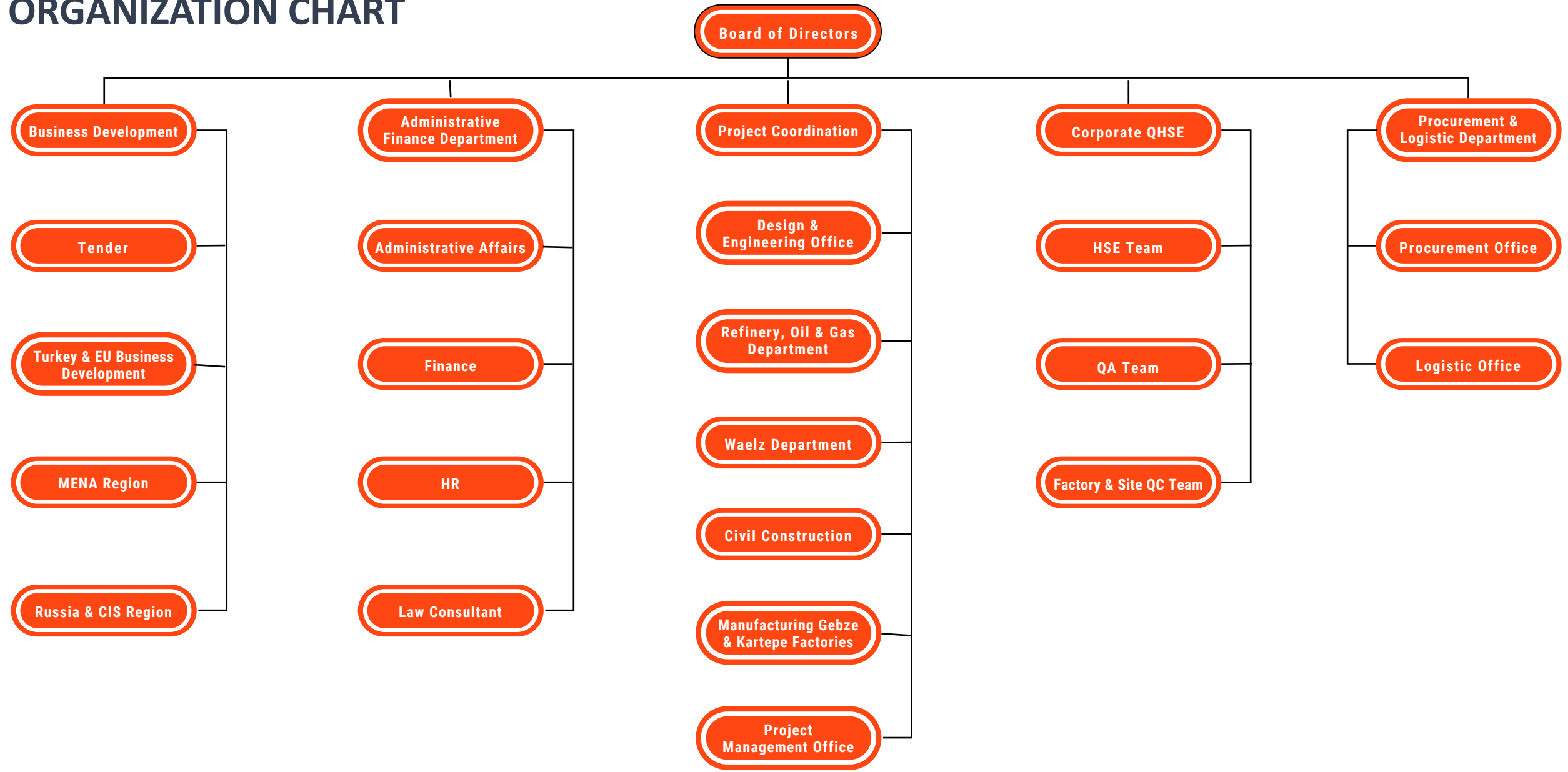
+ We offer services in the fields of design & engineering,
+ procurement & logistic, fabrication, construction, and
+ commissioning for various industries

Deha Tech is always improving its know-how, rich human resources and capacity. Making use of its values and capabilities today, Deha Tech has turned into a leading international EPC contractor.

On behalf of the company's board of directors, executives, employees, and subsidiaries, we would like to thank all our clients, partners, business allies to rely on us and support our business all along.



ORGANIZATION CHART



COMPANY PROFILE

DEHA TECH AROUND THE WORLD

Central Office

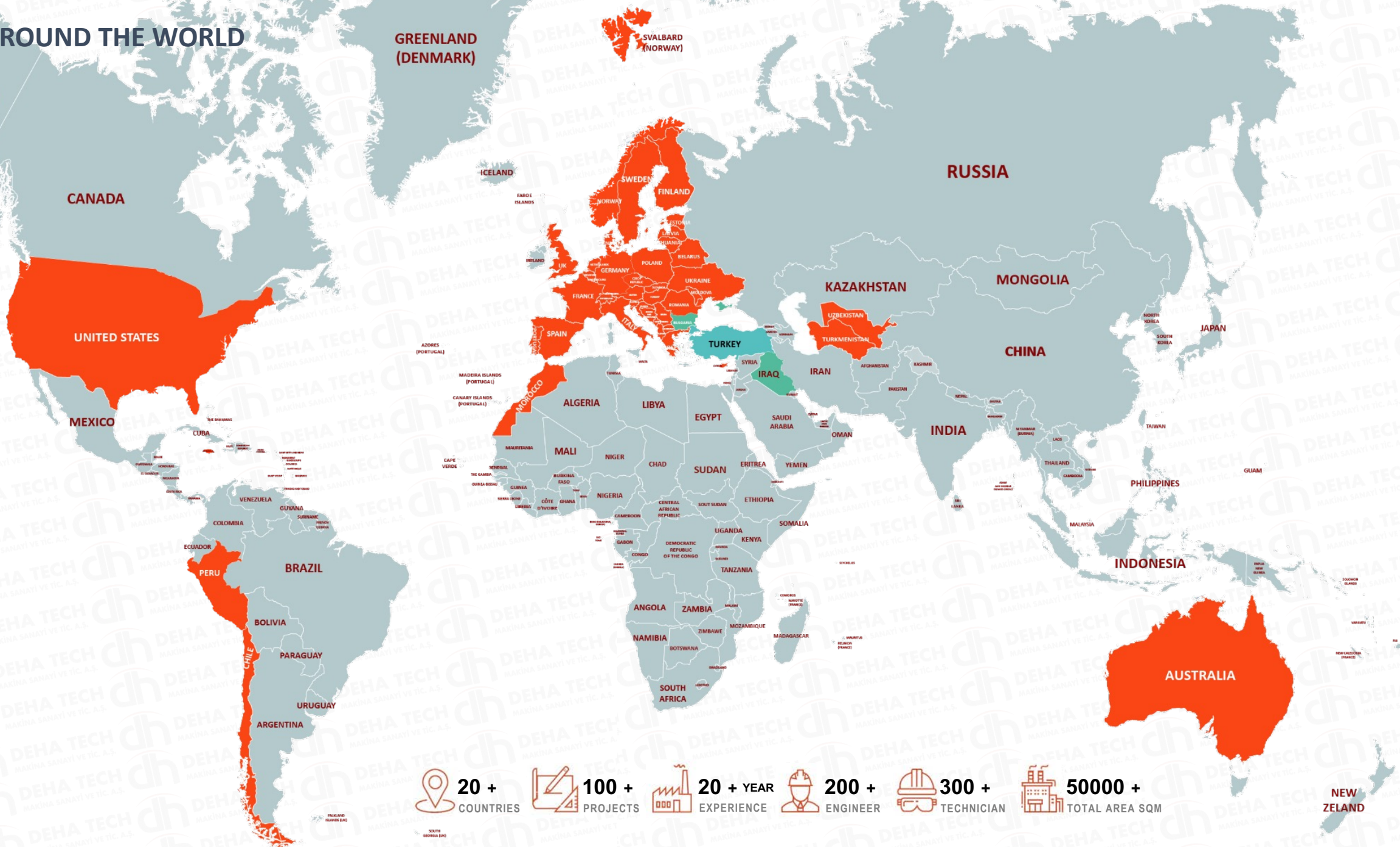
Turkey

Branch Offices

Bulgaria
Iraq
Uzbekistan

Projects

Turkey
Italy
Spain
Finland
Iraq
Bulgaria
United Kingdom
France
United States
Peru
Uzbekistan
Turkmenistan
Morocco
Cyprus
Jamaica
Switzerland
Australia
Chile
Norway



20 +
COUNTRIES

100 +
PROJECTS

20 + YEAR
EXPERIENCE

200 +
ENGINEER

300 +
TECHNICIAN

50000 +
TOTAL AREA SQM

QUALITY POLICY

Deha Tech minimizes accidents by preventing the possibility of an accident at its source during all of its activities and makes an effort to prevent occupational diseases.

Deha Tech provides consultancy and participation to OHS activities with the awareness that all subcontractors, visitors and employees are responsible for their own safety in order to achieve the targets for occupational health and safety of all employees.

Seeing as the most important priority of applicable Occupational Health & Safety Legislation and to comply with the terms of Membership Organizations, Hazard & Risk assessment, identifying existing hazards and risks and to provide possible protection, activities and products are brought into an integral commitment, work environment and occupational Health & Continuous improvement in safety practices adopted as policy.

Deha Tech provides customer satisfaction with Quality, Price and On-time Delivery. Quality is the first principle of DEHA TECH. Our Quality System is certified in under the requirements of EN ISO 9001 standard.



ENVIRONMENTAL POLICY

Deha Tech works in an environmentally and friendly way without harming the environment with its works and manufacturing methods in its sector and activity fields.

Deha Tech is aware of its responsibilities regarding the efficient use of the limited resources of the environment and the earth we live in.

We adopt to be respectful to the environment in its activities and comply with the legal regulations regarding the environment.



Rights / Responsibility / Aim

As Deha Tech, we believe and follow all that social responsibility projects are part of the criteria of sustainability.

SOCIAL RESPONSIBILITY

As part of its sustainability approach, Deha Tech has planned its studies on **Education**, Art, Nature and **Environment**, Employment, of Women and Youth, Animal Rights and will share it in the near future



ITU Races sponsored by Deha Tech

WE'RE PROUD OF OUR SAFETY, INTEGRITY, TEAMWORK AND EXCELLENCE COMMITMENT

SUSTAINABILITY



The importance of every drop in water management



Collection and classification of waste at source at solid waste management



The contribution of shared decision-making, training and participation in our processes to our productivity principle



Our belief in the contribution of women and youth



We give priority to education with the awareness that there are no limits in personal development.



OCCUPATIONAL HEALTH AND SAFETY

Our priority is to maintain the health and safety of our employees and public, to minimise the environmental impact associated with our activities.

Working at Deha Tech means becoming a part of energetic team committed to obtain objectives in international conditions.

We ensure that Deha Tech Group Companies have effective occupational health and safety systems to generate customer confidence and protecting employees.



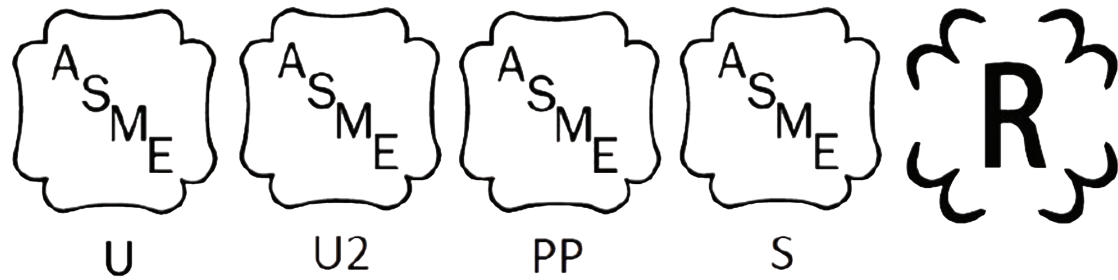
SAFETY FIRST



We ensure that organizations have effective occupational health and safety systems in place to protect employees

- ★ Think Safe
- ★ Act Safe
- ★ Stay Safe

OUR CERTIFICATES



EXC - 4 CERTIFICATED



BUSINESS PARTNERS



Deha Tech is recognized as a leading global supplier of fabricated components and holds an impressive range of approvals/standards for various grades of carbon steels and aluminium and stainless steel

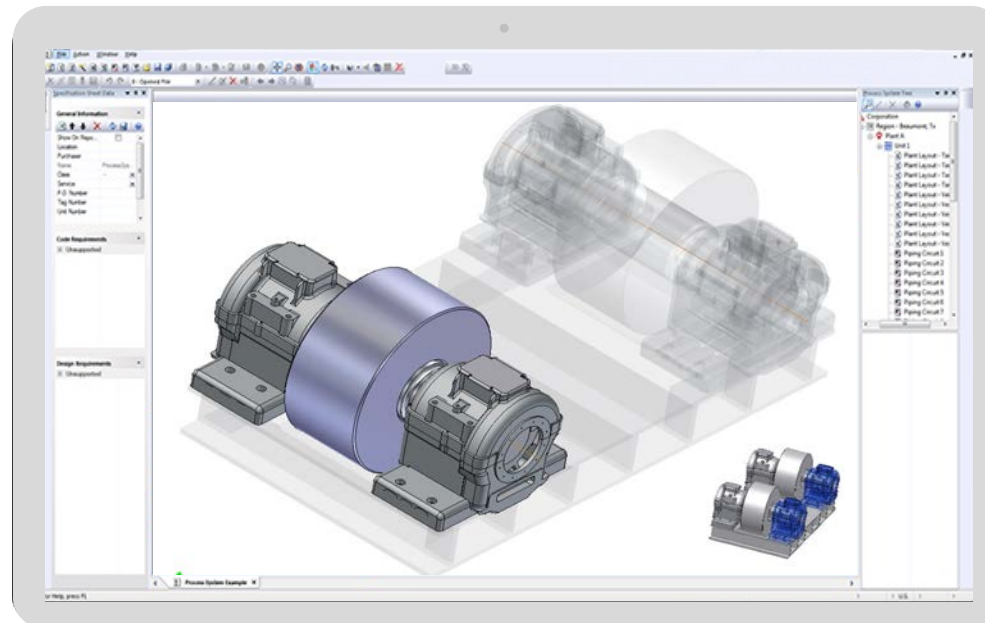
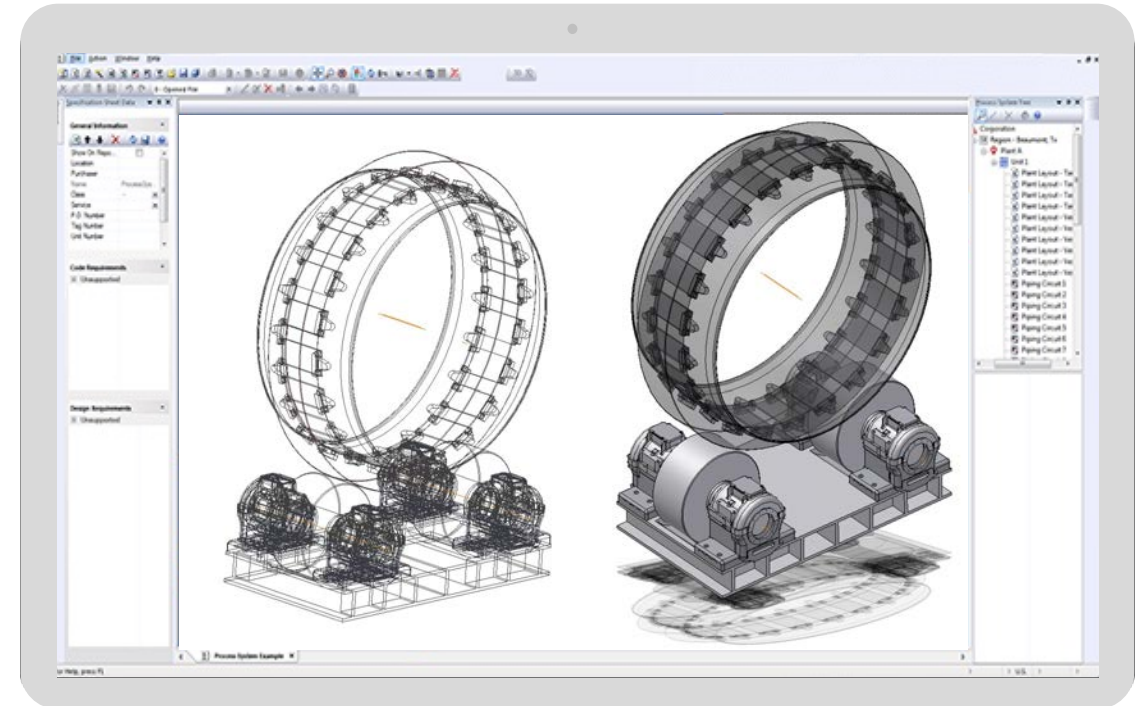
Our manufacturing facility offers an impressive 37,000 sq. Meters of modern manufacturing space. We have a wide range of modern fabrication and assembly equipment and highly qualified engineers and design specialists, with full in-house computer facilities.

We offer cost-effective, high-quality engineering and fabrication services.

A range of materials can be competently welded by our skilled workforce such as armoured steels, quenched and tempered structural steels, abrasive resistant steels, offshore grade steels and aluminium.

Deha Tech`s Advantages and Benefits in Fabrication & Assembly:

- A dedicated assembly team with many years' experience in Hydraulic, Pneumatic and Mechanical assembly.
- Highly skilled workforce allows us to supply complex components fully finished and ready to use.
- Invested in the latest industry leading equipment so we are able to manufacture with more speed and accuracy
- Keeping costs down for our global customer base
- Systematically improving the overall quality of our fabrication and assembly services.
- Extensive range of material welding capabilities
- Faster lead times, and lower transportation costs overall



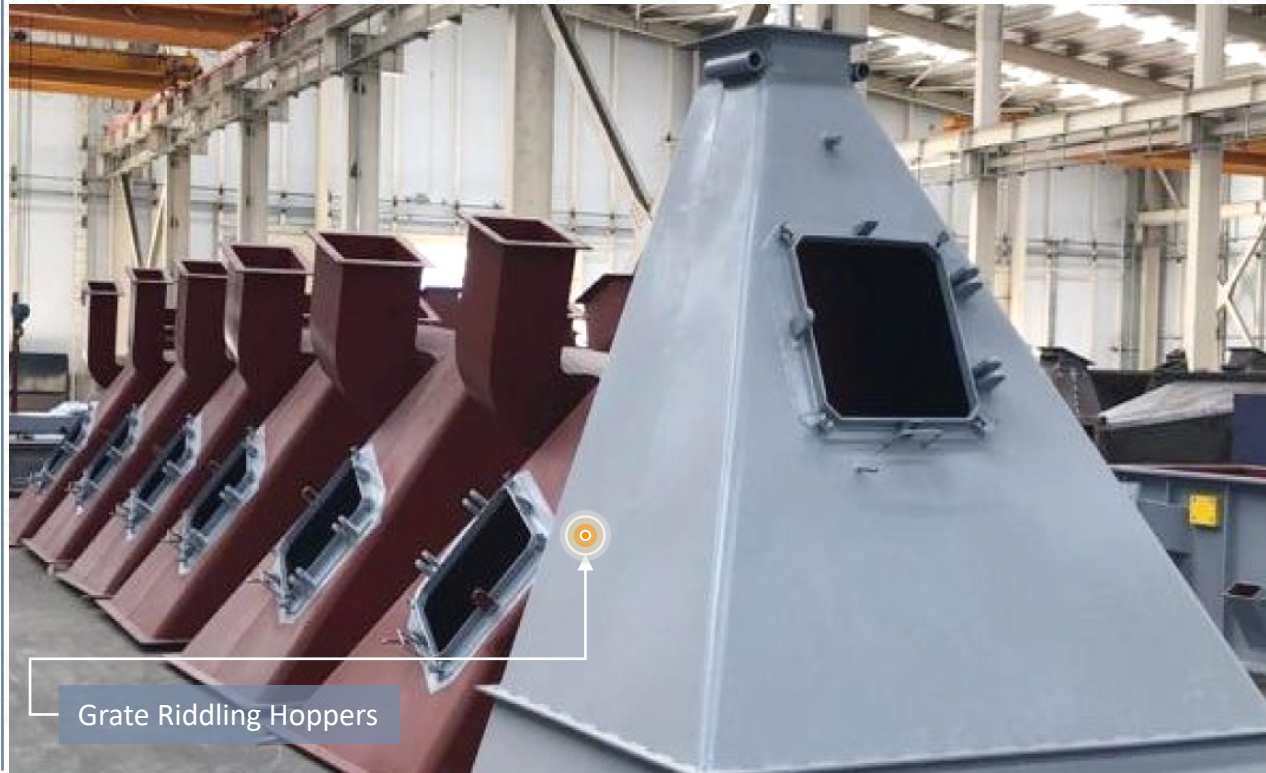
Deha Tech undertakes a wide range of fabrication and assembly projects across many industries, provides a fully comprehensive service from high volume work to small scale production jobs

Our services include:

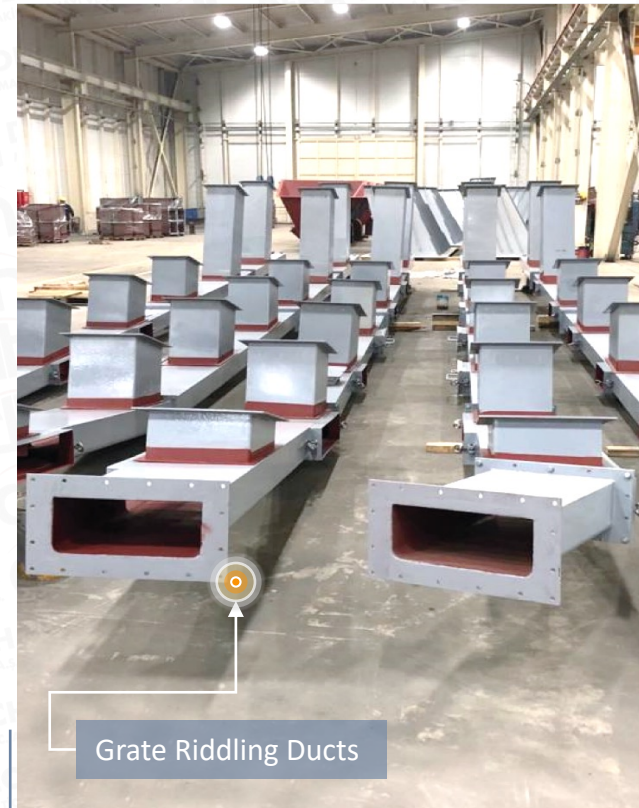
- Sub-assembly processes
- Full assembly processes from start to finish
- Design & Project management
- Assembly large and complex projects
- Coating Solutions
- Turnkey Solutions
- Our turnkey solutions make fabrication and assembly faster with comprehensive fabrication services from start to finish.



Grate Riddling Hoppers



Grate Riddling Hoppers



Grate Riddling Ducts

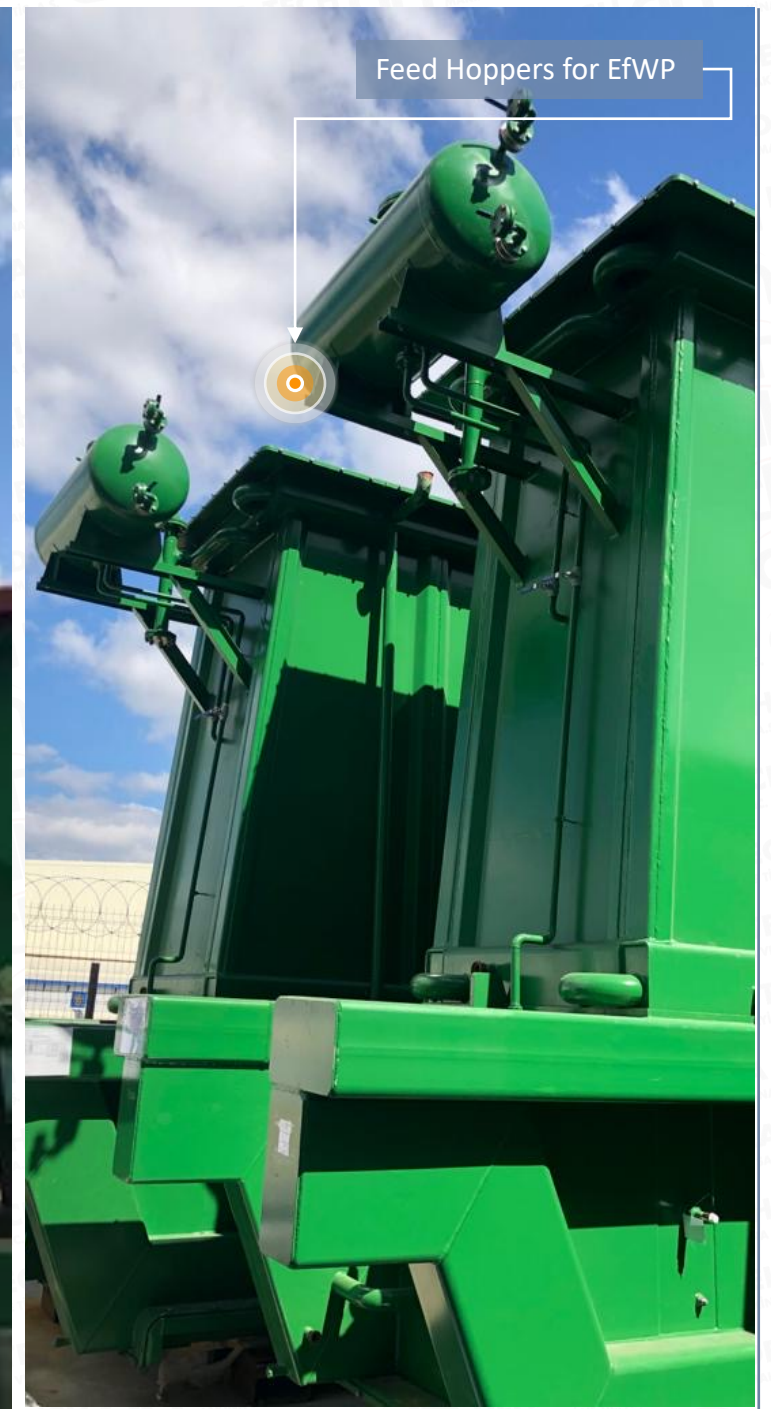


Grate Riddling Hoppers

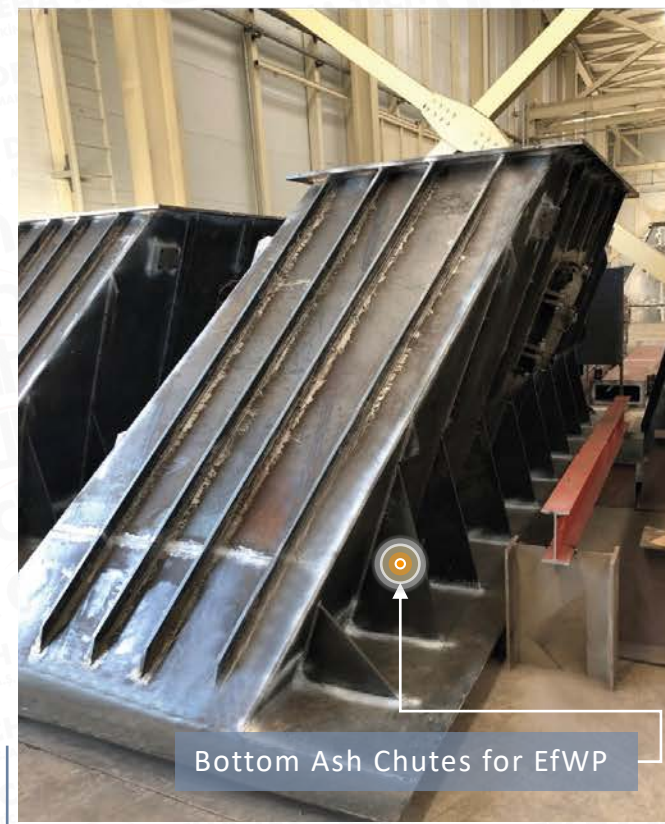




Feed Hopper for EfWP



Feed Hoppers for EfWP

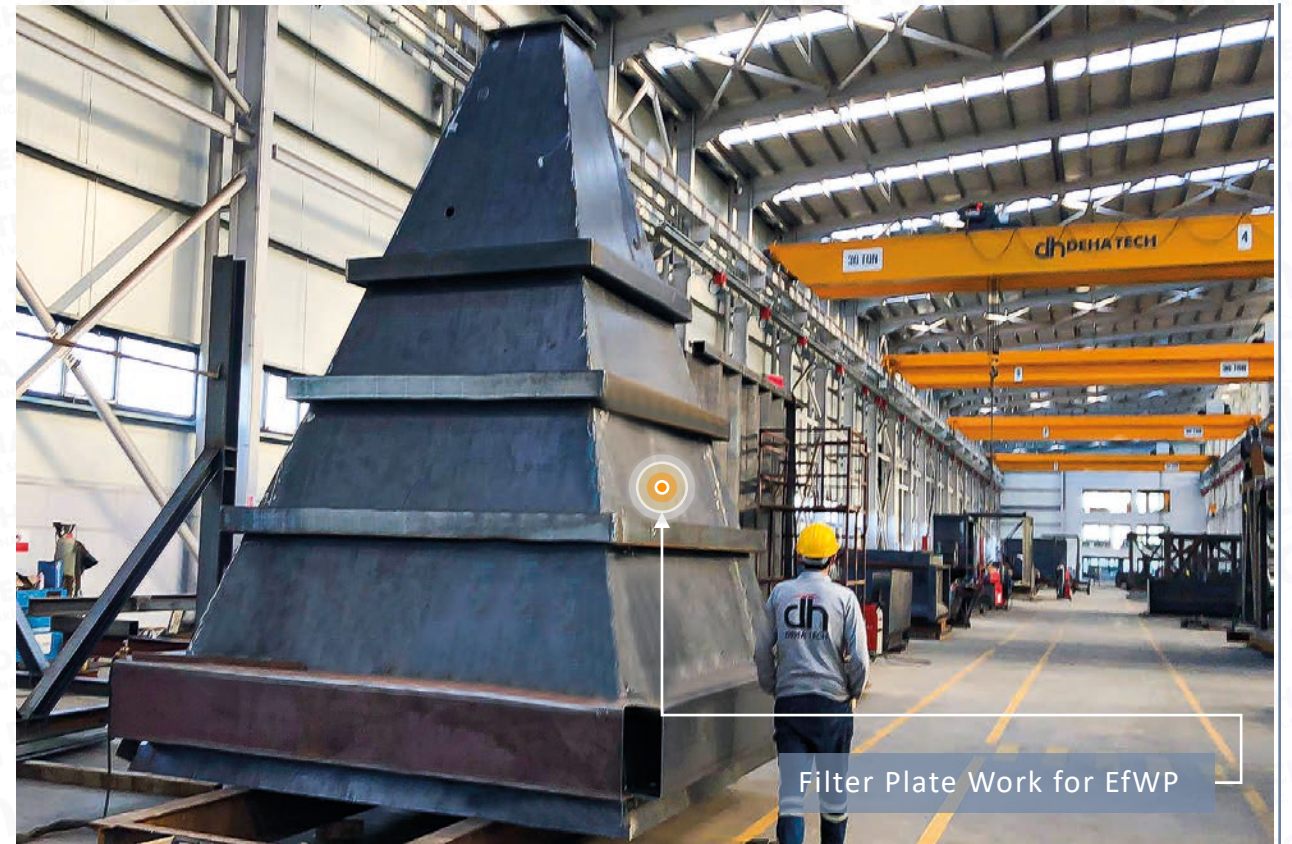




Boiler Non-Pressure Parts for EfWP



Boiler Non-Pressure Parts for EfWP



Filter Plate Work for EfWP

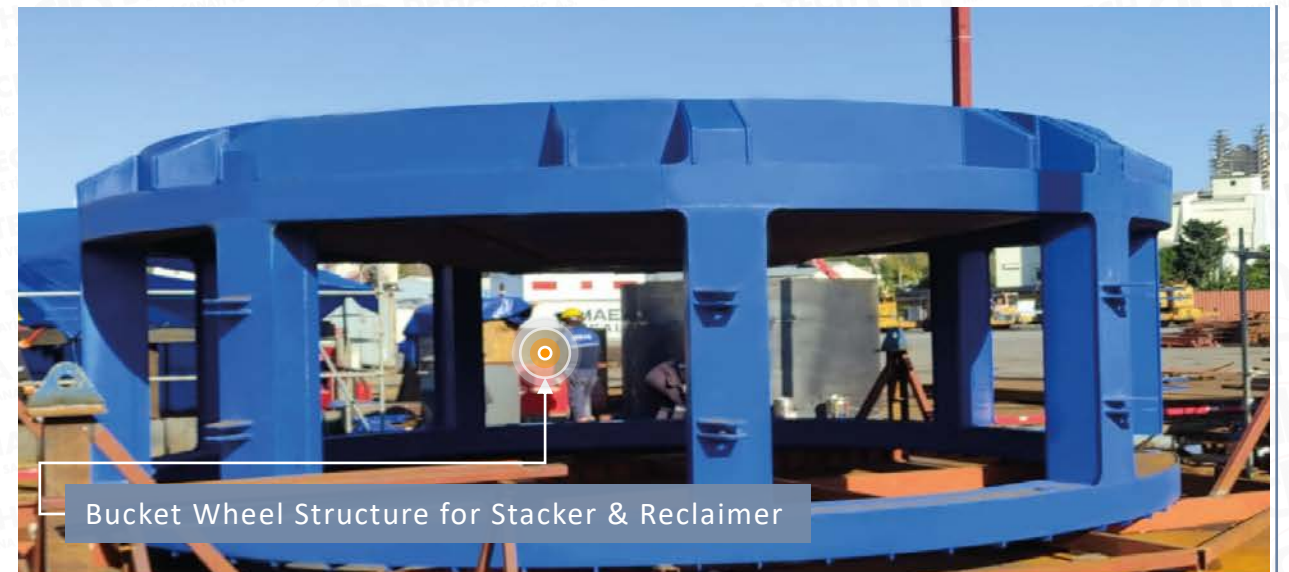


Filter Plate Work for EfWP





Gas Duct



Bucket Wheel Structure for Stacker & Reclaimer

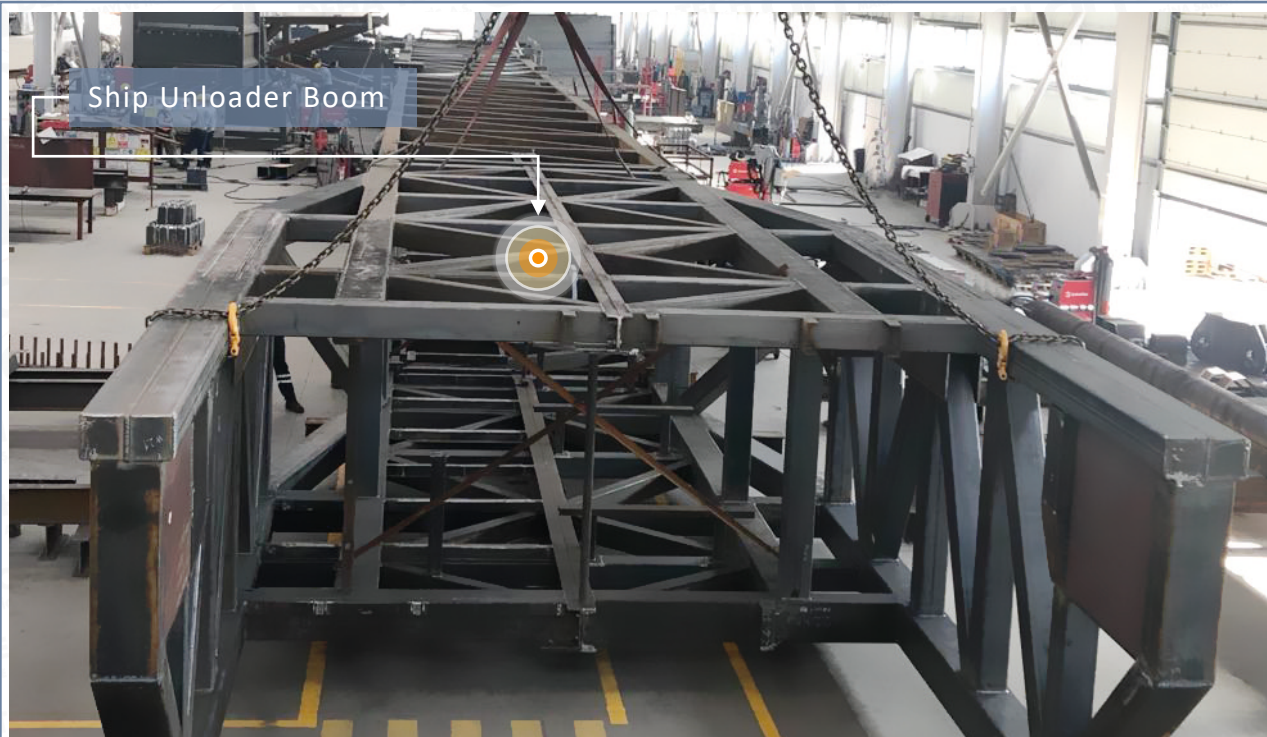


Gas Duct



Bucket Wheel Structure for Stacker & Reclaimer







Ram Type Bottom Ash Extractors for EfWP



Ram Type Bottom Ash Extractor for EfWP



Ram Type Bottom Ash Extractor for EfWP



Fabric Filters Manufacturing



Fabric Filter Manufacturing



Fabric Filter



Fabric Filters Manufacturing



Cranes Loading Fabric Filters for Shipment



Fabric Filters Packing Process



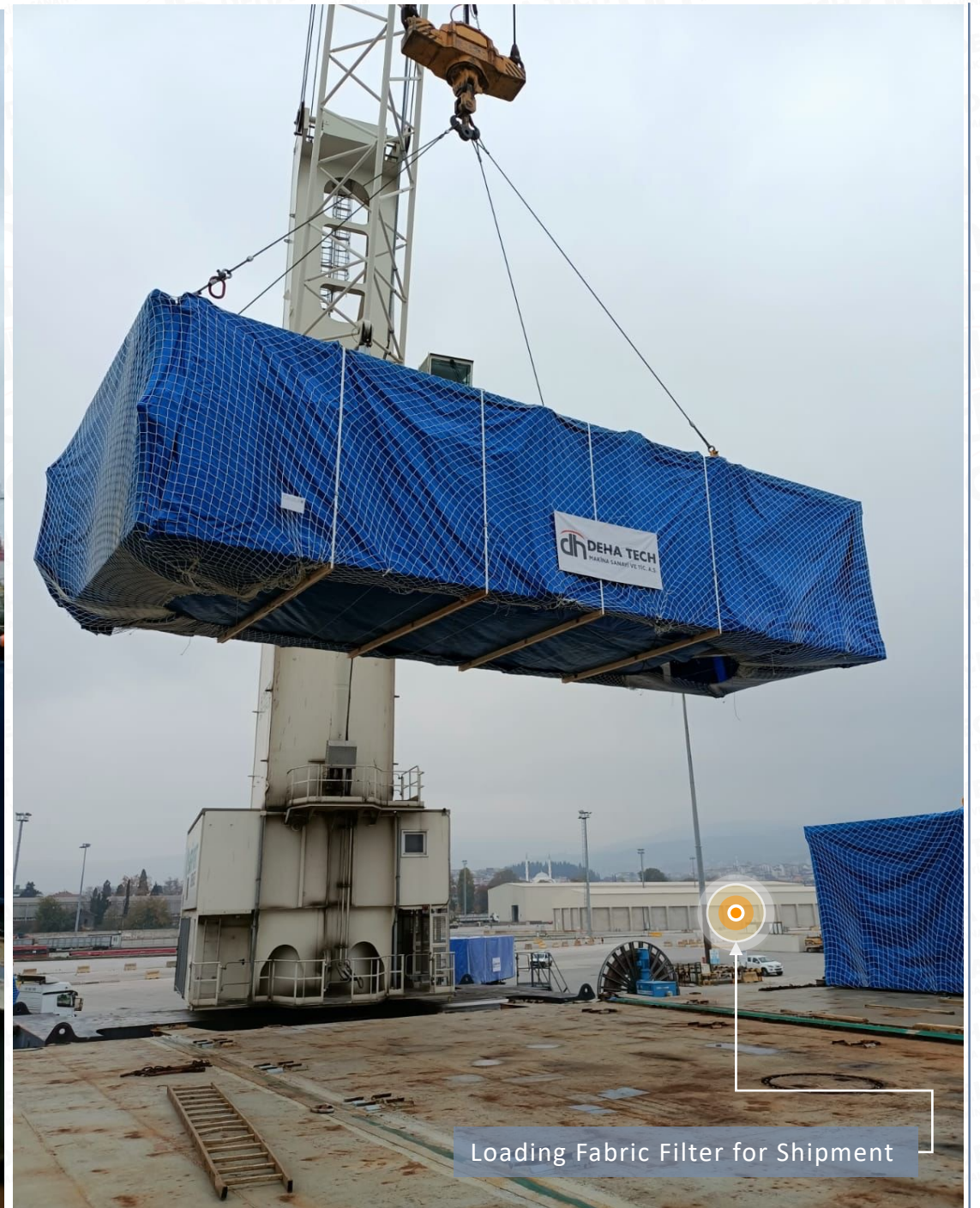
Fabric Filters Ready for Shipment



Fabric Filters Transport to Shipment



Loading Fabric Filter for Shipment



Loading Fabric Filter for Shipment





Fabric Filters & Clean Gas Duct Shipment



Fabric Filters & Clean Gas Duct Shipment



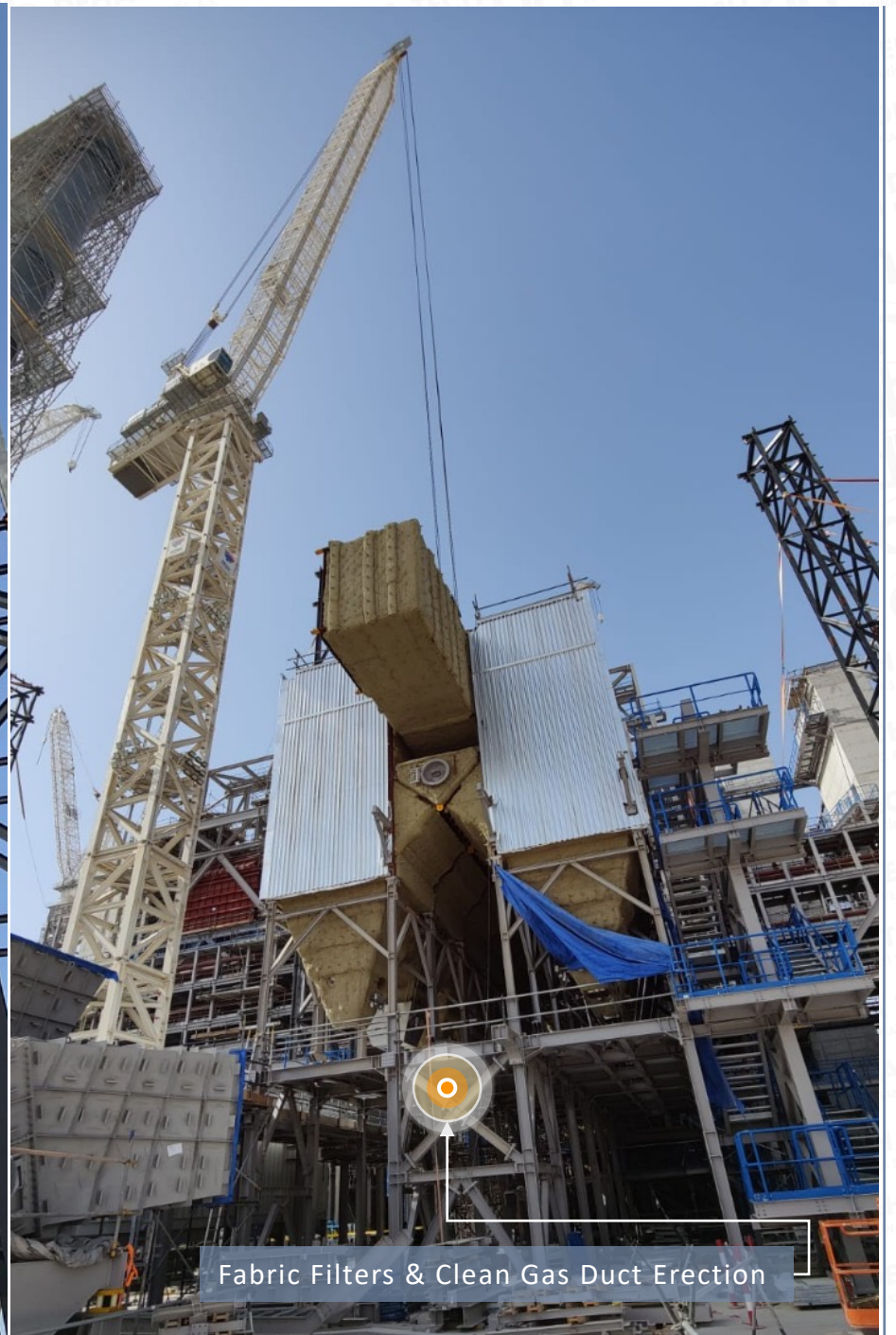
Fabric Filters & Clean Gas Duct Erection



Fabric Filters Erection



Fabric Filters & Clean Gas Duct Erection



Fabric Filters & Clean Gas Duct Erection

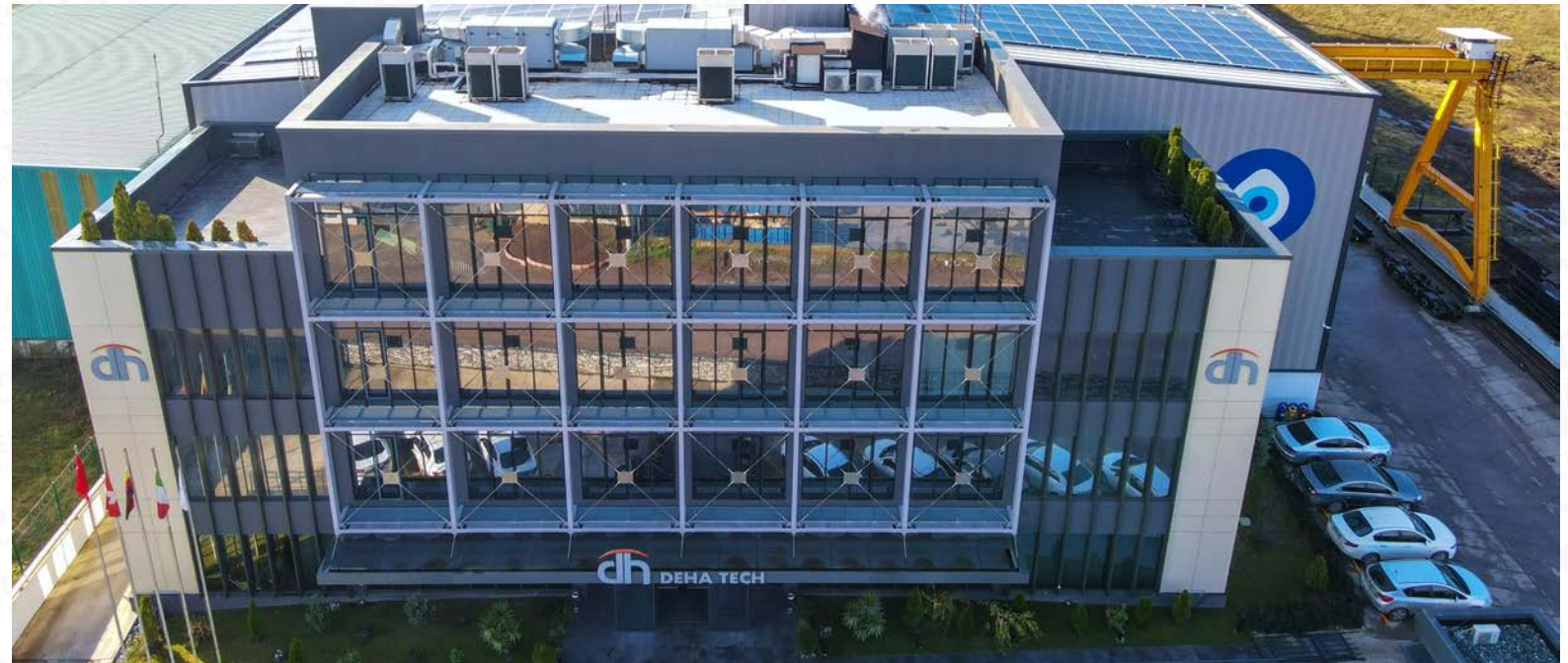
A large group of approximately 100 employees, mostly men wearing yellow hard hats and dark work jackets with reflective stripes, are posed in several rows in front of a modern building. The building has large glass windows and a prominent logo consisting of the letters 'dh' in a stylized font with an orange arc above it, followed by the text 'DEHA TECH' in large, bold, grey letters. Some employees in the front row are wearing white hard hats and high-visibility yellow safety vests. The scene is set outdoors during the day.

dh DEHA TECH

MANUFACTURING PLANTS

KARTEPE FACTORY 1 PROFILE

Location	Kartepe	Status	Active
Open Area	18.000 m ²	Closed Area	10.000 m ²
Production Capacity	4.800 t	Personnel	150
Main Equipment	<p>1500 mm x 300 mm Hydraulic Press 300 t HPK 100 Profile and Pipe Rolling Machine MIG / MAG Welding Machines TIG Welding Machines Aluminium Welding Machines Submerged Arc Welding Machines Sleeve Welding Machine Electric Welding Machine Screw Lathe Weighing Machine 150 t Band Saw Cutting Machine, D 1000 mm Radial Drill + Threading, Hole D 50 mm 3 x 4 Rolls Hydraulic Plate Bending Machine Up to 80 mm x 3000 mm Bending Capacity Up to 12 mm x 3000 mm Bending Capacity Up to 60 mm x 3000 mm Bending Capacity</p>		
Crane Capacity	<p>8 x 30 t Overhead Cranes x (h) 9.5 m 1 x 20 t Portal Crane x (h) 9.5 m 2 x 25 t Portal Cranes x (h) 9.5 m 1 x 30 t Portal Crane x (h) 9.5 m 1 x 15 t Portal Crane x (h) 9.5 m</p>		



KARTEPE FACTORY 2 PROFILE

Location	Kartepe
Status	Active
Open Area	2.500 m ²
Closed Area	2.500 m ²
Production Capacity	5.000 t
Personnel	40
Main Equipment	3 m x 12 m CNC Plasma + Oksi (Angle Cutting) 2,5 m x 12 m CNC Plasma (Angle Cutting) 12 m Plasma Pipe Cutting Machine Band Saw Cutting Machine Radial Drill + Threading, Hole D 50 mm 7100*600 mm Hydraulic Bending 700 t 1020*150 mm Hydraulic Bending 150 t 4000*440 mm Hydraulic Bending 440 t Screw Lathe Sand Blasting Cabinet & Paint Area CNC Milling Machine Universal Milling Machine Turning Lathe CNC Turning Machine
Crane Capacity	4 x 10 t Crane x (h) 7.3 m



KARTEPE FACTORY 1 GENERAL VIEW

150 Ton Weighbridge (24m x 3m)

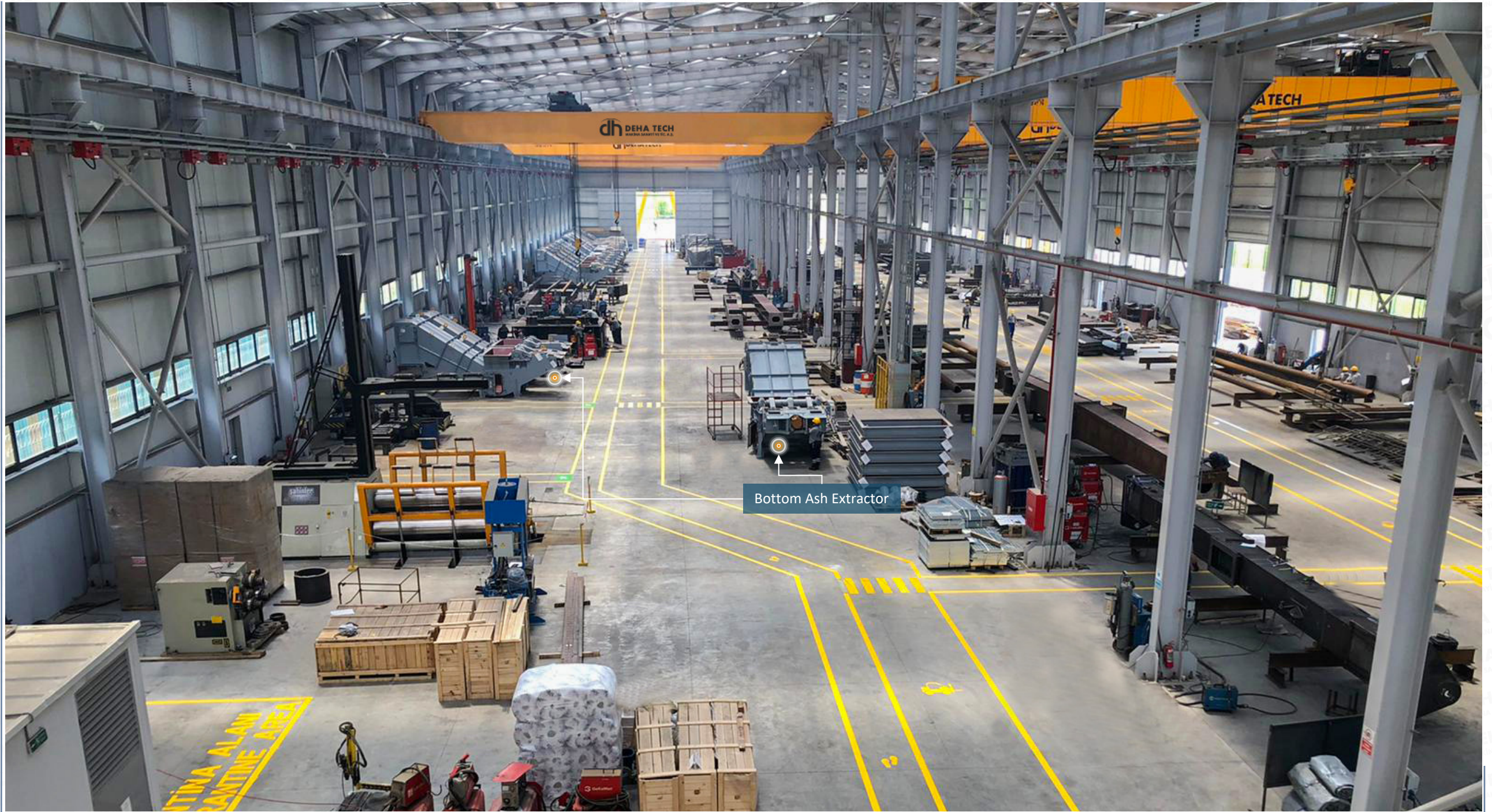
20 Ton Gantry Crane

25 Ton Gantry Cranes

30 + 15 Ton Gantry Crane

Deha Tech continues to provide the highest quality services worldwide at full speed, with a total of 2000 employees, 4 factories and 1 port in a 59000 sqm production area.

DEHA TECH KARTEPE FACTORY INTERIOR VIEW



DEHA TECH KARTEPE FACTORY GENERAL VIEW

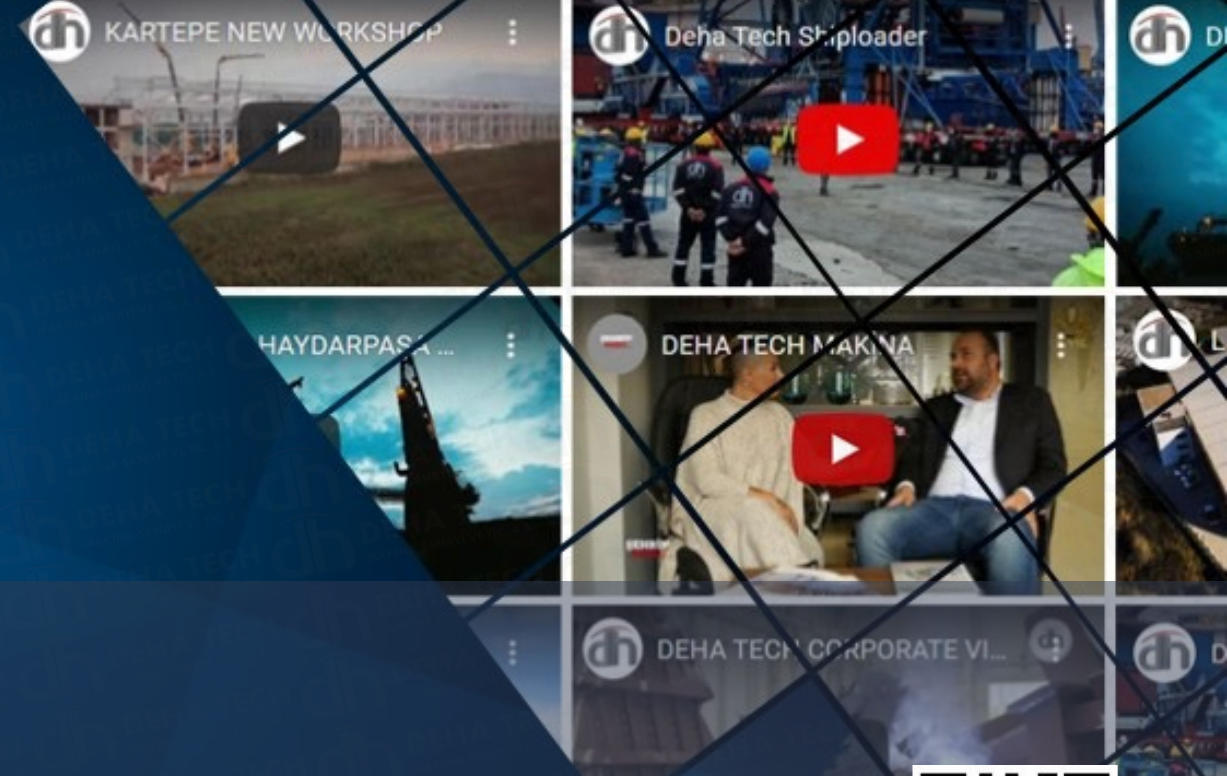


DEHA TECH KARTEPE FACTORY 2

DEHA TECH KARTEPE FACTORY 1

- Fast Response
- Technology Driven Projects
- Sustainable Profitability and Financial Stability

DEHA TECH`S CONTACT DETAILS



www.dehatech.com

▶ Deha Tech Headquarters

A : Kemeraltı Caddesi No:28, Pk:34425,
Müeyyetzade Mahallesi, Karaköy /
İSTANBUL / TR

W : info@dehatech.com

W : www.dehatech.com

T : +90 212 252 48 00

▶ Kartepe Factories

A : Arslanbey Mahallesi, Yeşilevler Sokak,
No:5, Pk:41285, Kartepe / KOCAELİ / TR

A : Arslanbey OSB Mahallesi, 3. Sokak,
No:12, Pk:41285, Kartepe / KOCAELİ / TR

▶ Gebze Factory

A : Barış, Koşuyolu Cd. No:23, Pk: 41400
Gebze/Kocaeli



Genius Solutions For Industrial Projects



THANK YOU