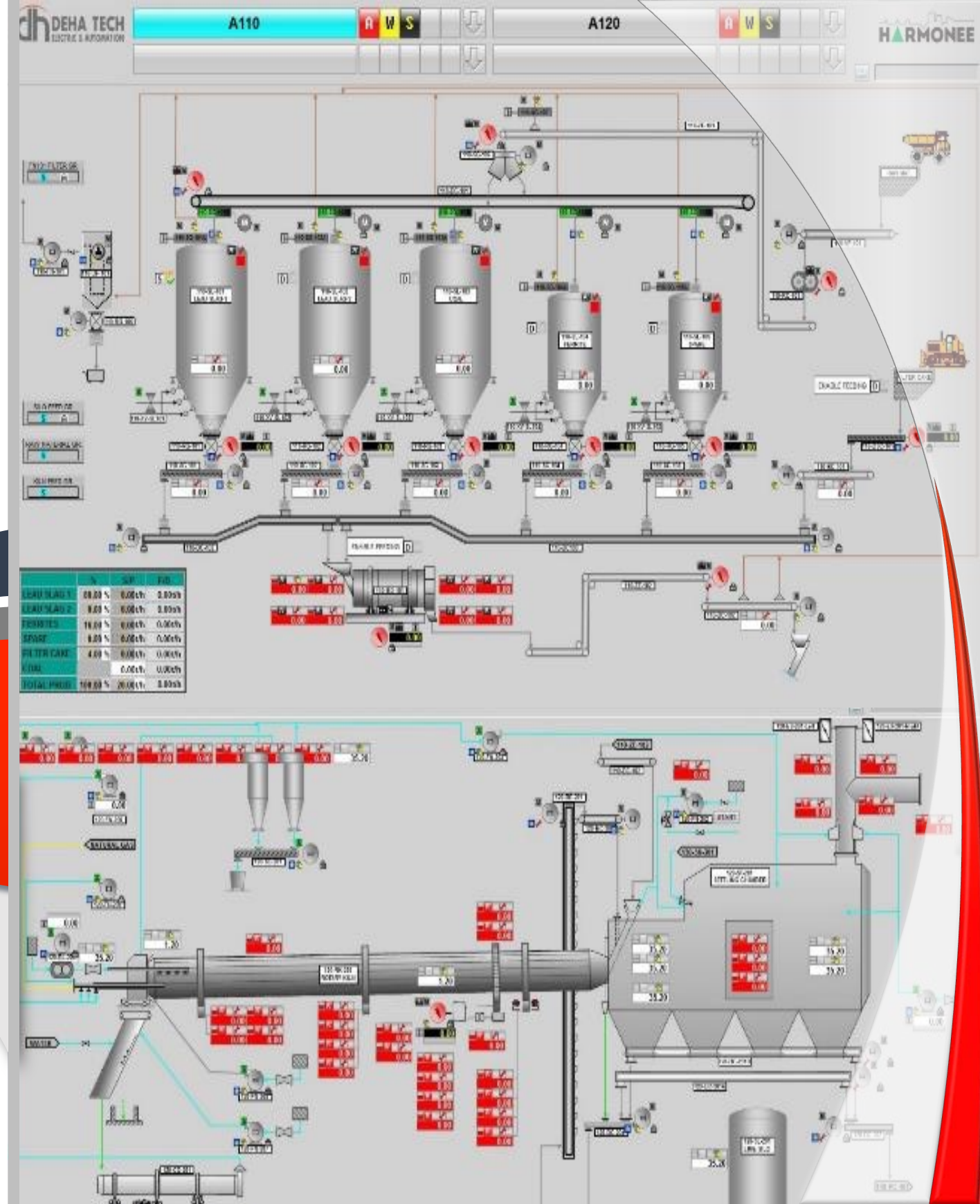


ELECTRIC & AUTOMATION



ABOUT DEHA TECH

Deha Tech is an International acting EPC (Engineering, Procurement and Construction) Company committed to obtain the highest standard of client satisfaction and providing long-term business relations with its clients. Since 2009 we're proud to have completed more than 100 projects and work every day to be a global partner with the promise of excellence.

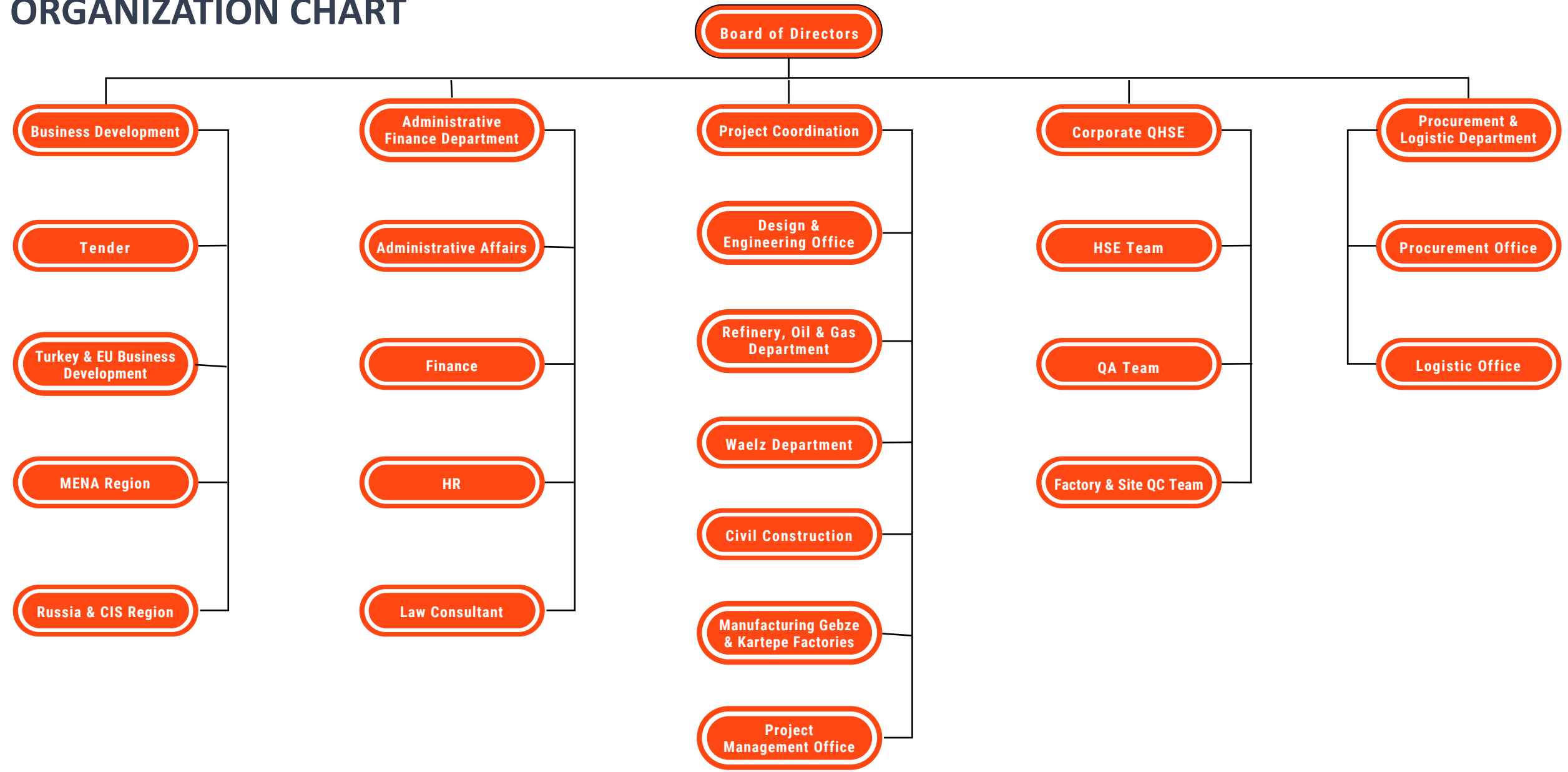
+ We offer services in the fields of design & engineering,
+ procurement & logistic, fabrication, construction, and
+ commissioning for various industries

Deha Tech is always improving its know-how, rich human resources and capacity. Making use of its values and capabilities today, Deha Tech has turned into a leading international EPC contractor.

On behalf of the company's board of directors, executives, employees, and subsidiaries, we would like to thank all our clients, partners, business allies to rely on us and support our business all along.



ORGANIZATION CHART

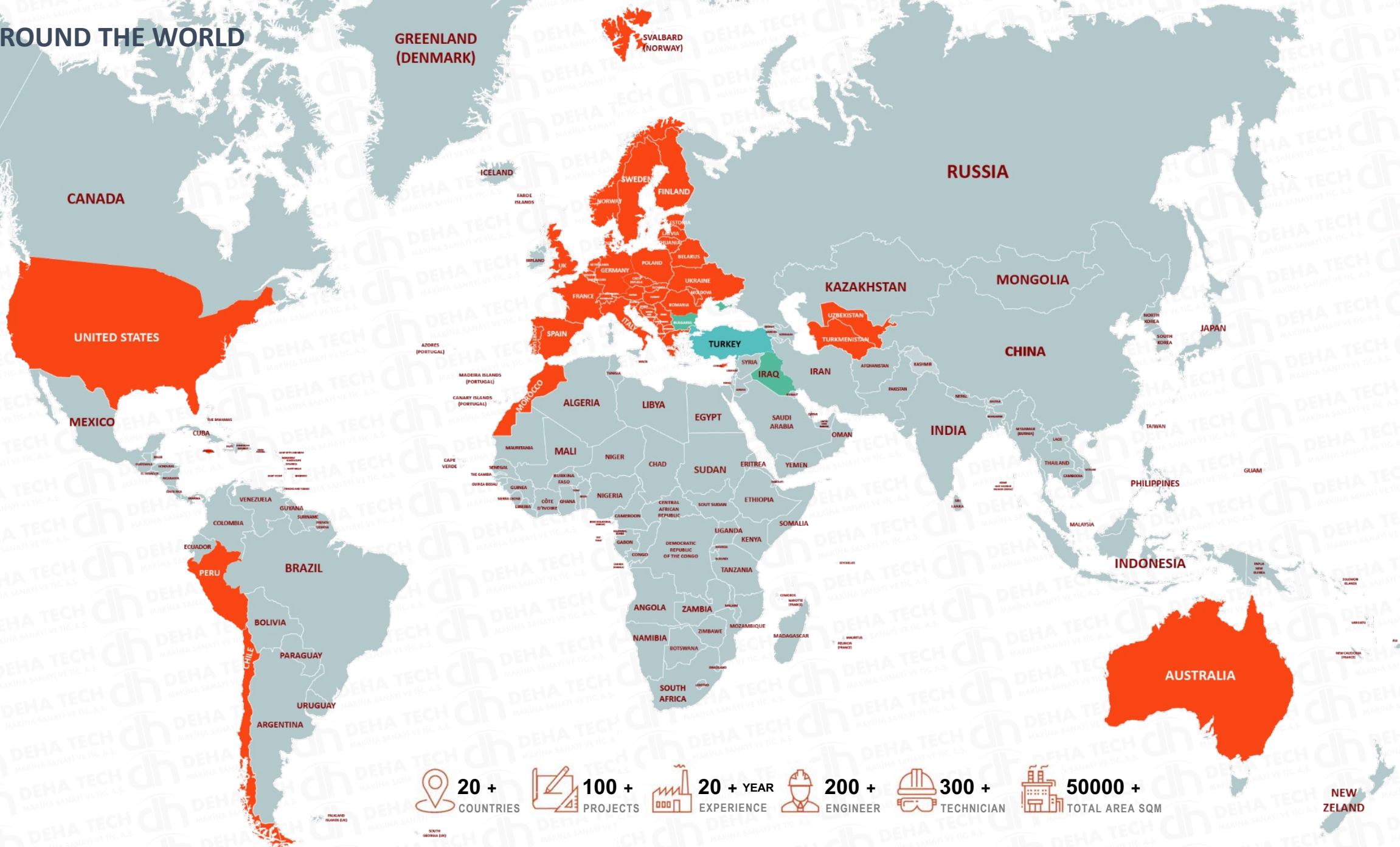


COMPANY PROFILE

DEHA TECH AROUND THE WORLD

- Central Office**
- Turkey
- Branch Offices**
- Bulgaria
- Iraq
- Uzbekistan
- Projects**

- Turkey
- Italy
- Spain
- Finland
- Iraq
- Bulgaria
- United Kingdom
- France
- United States
- Peru
- Uzbekistan
- Turkmenistan
- Morocco
- Cyprus
- Jamaica
- Switzerland
- Australia
- Chile
- Norway



- 20 +**
COUNTRIES
- 100 +**
PROJECTS
- 20 + YEAR**
EXPERIENCE
- 200 +**
ENGINEER
- 300 +**
TECHNICIAN
- 50000 +**
TOTAL AREA SQM

QUALITY POLICY

Deha Tech minimizes accidents by preventing the possibility of an accident at its source during all of its activities and makes an effort to prevent occupational diseases.

Deha Tech provides consultancy and participation to OHS activities with the awareness that all subcontractors, visitors and employees are responsible for their own safety in order to achieve the targets for occupational health and safety of all employees.

Seeing as the most important priority of applicable Occupational Health & Safety Legislation and to comply with the terms of Membership Organizations, Hazard & Risk assessment, identifying existing hazards and risks and to provide possible protection, activities and products are brought into an integral commitment, work environment and occupational Health & Continuous improvement in safety practices adopted as policy.

Deha Tech provides customer satisfaction with Quality, Price and On-time Delivery. Quality is the first principle of DEHA TECH. Our Quality System is certified in under the requirements of EN ISO 9001 standard.



ENVIRONMENTAL POLICY

Deha Tech works in an environmentally and friendly way without harming the environment with its works and manufacturing methods in its sector and activity fields.

Deha Tech is aware of its responsibilities regarding the efficient use of the limited resources of the environment and the earth we live in.

We adopt to be respectful to the environment in its activities and comply with the legal regulations regarding the environment.

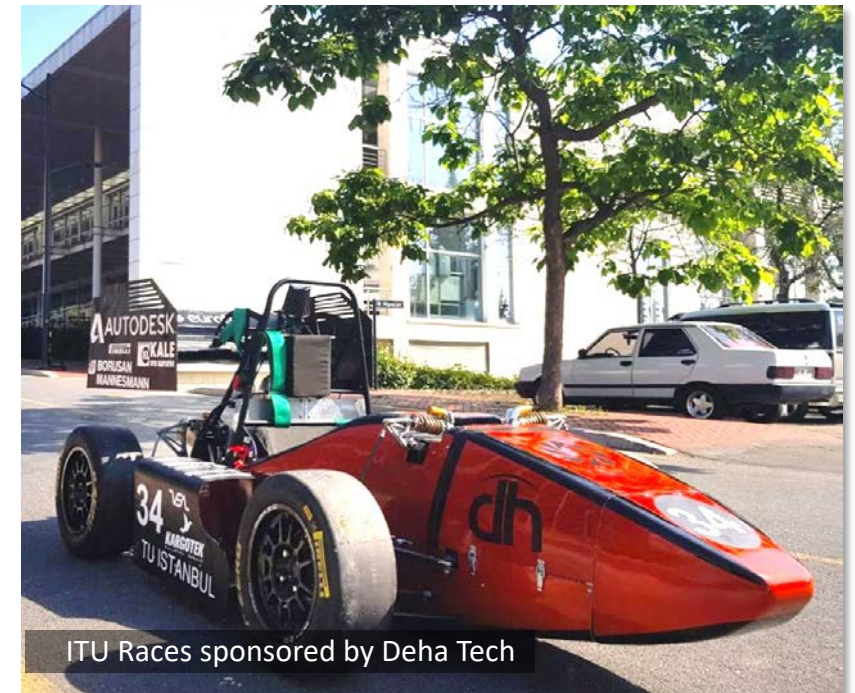


Rights / Responsibility / Aim

As Deha Tech, we believe and follow all that social responsibility projects are part of the criteria of sustainability.

SOCIAL RESPONSIBILITY

As part of its sustainability approach, Deha Tech has planned its studies on **Education**, Art, Nature and **Environment**, Employment, of Women and Youth, Animal Rights and will share it in the near future



ITU Races sponsored by Deha Tech

WE'RE PROUD OF OUR SAFETY, INTEGRITY, TEAMWORK AND EXCELLENCE COMMITMENT

SUSTAINABILITY



The importance of every drop in water management



Collection and classification of waste at source at solid waste management



The contribution of shared decision-making, training and participation in our processes to our productivity principle



Our belief in the contribution of women and youth



We give priority to education with the awareness that there are no limits in personal development.



ITU Races sponsored by Deha Tech

Social Approach



Environment



Management

OCCUPATIONAL HEALTH AND SAFETY

Our priority is to maintain the health and safety of our employees and public, to minimise the environmental impact associated with our activities.

Working at Deha Tech means becoming a part of energetic team committed to obtain objectives in international conditions.

We ensure that Deha Tech Group Companies have effective occupational health and safety systems to generate customer confidence and protecting employees.



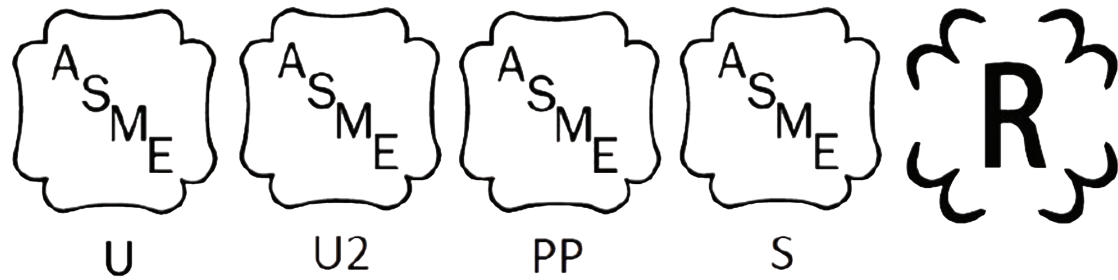
SAFETY FIRST



We ensure that organizations have effective occupational health and safety systems in place to protect employees

- ★ Think Safe
- ★ Act Safe
- ★ Stay Safe

OUR CERTIFICATES












EXC - 4 CERTIFICATED



BUSINESS PARTNERS



ABOUT ELECTRIC AND AUTOMATION

One of the Deha Tech Group companies, Deha Tech Electric and Automation is a sought-after and preferred solution partner with its long years of experience and competence especially in waelz, cement and filter automation.

This ensures you total control of plant operations, and the benefits that brings:

- Enhanced and guaranteed performance
- Consistent product quality
- Uncompromising safety
- Reduced environmental impact

For your next installation or commissioning of an industrial automation system, choose Deha Tech to get a scalable, cost-competitive and high-quality solution.



We design and build control systems for water, wastewater, cement, paper mining, manufacturing, and other industrial applications, as well as providing the associated testing, documentation, installation supervision, operator training, and maintenance services to support these systems.



Deha Tech Scope of Works

3 Set Remote I/O Panel

1 Set PLC Panel

1 Set SCADA System

400 pcs I/O

158 pcs Instrument

203 pcs Lighting Fixture

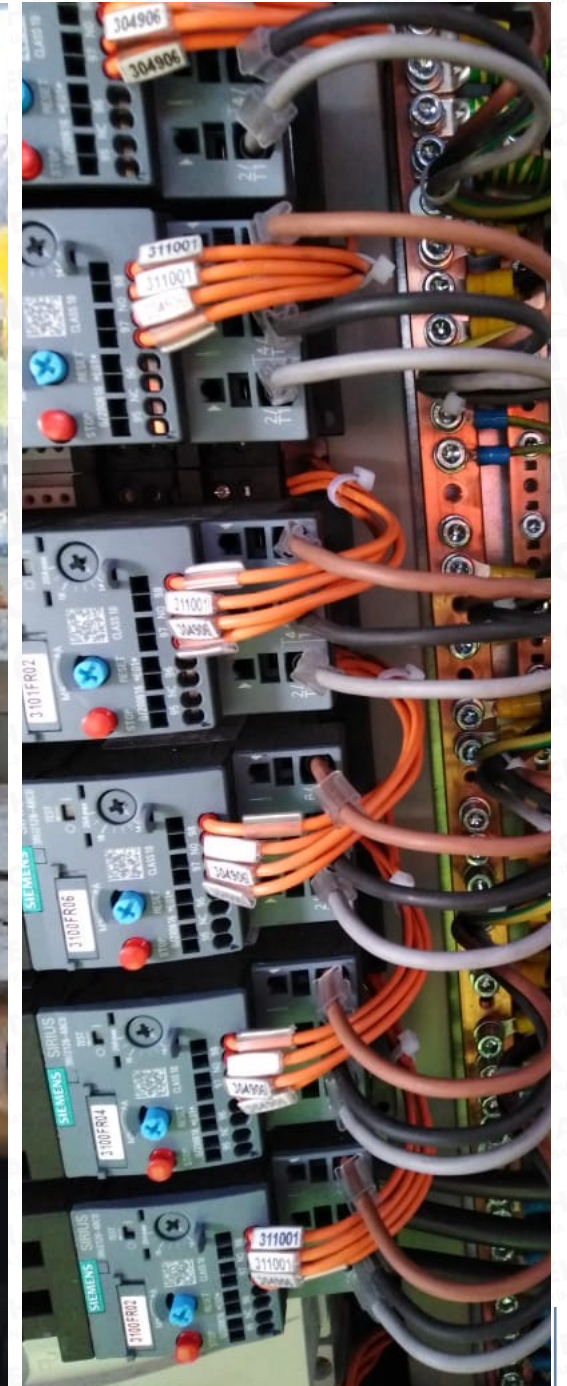
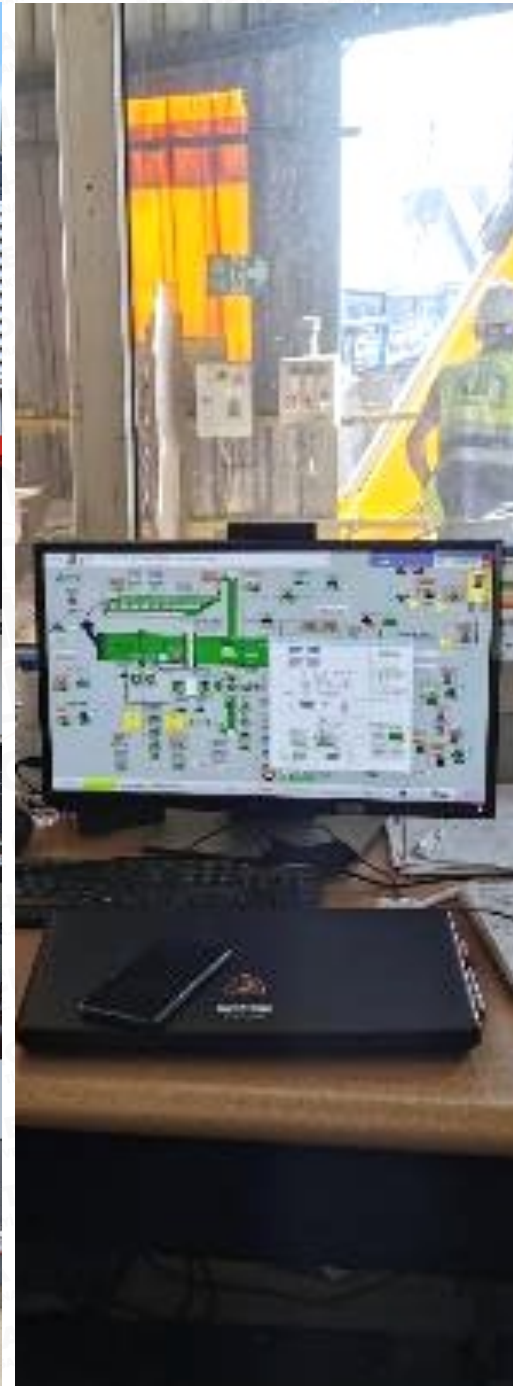
8.218 m. LV Cable

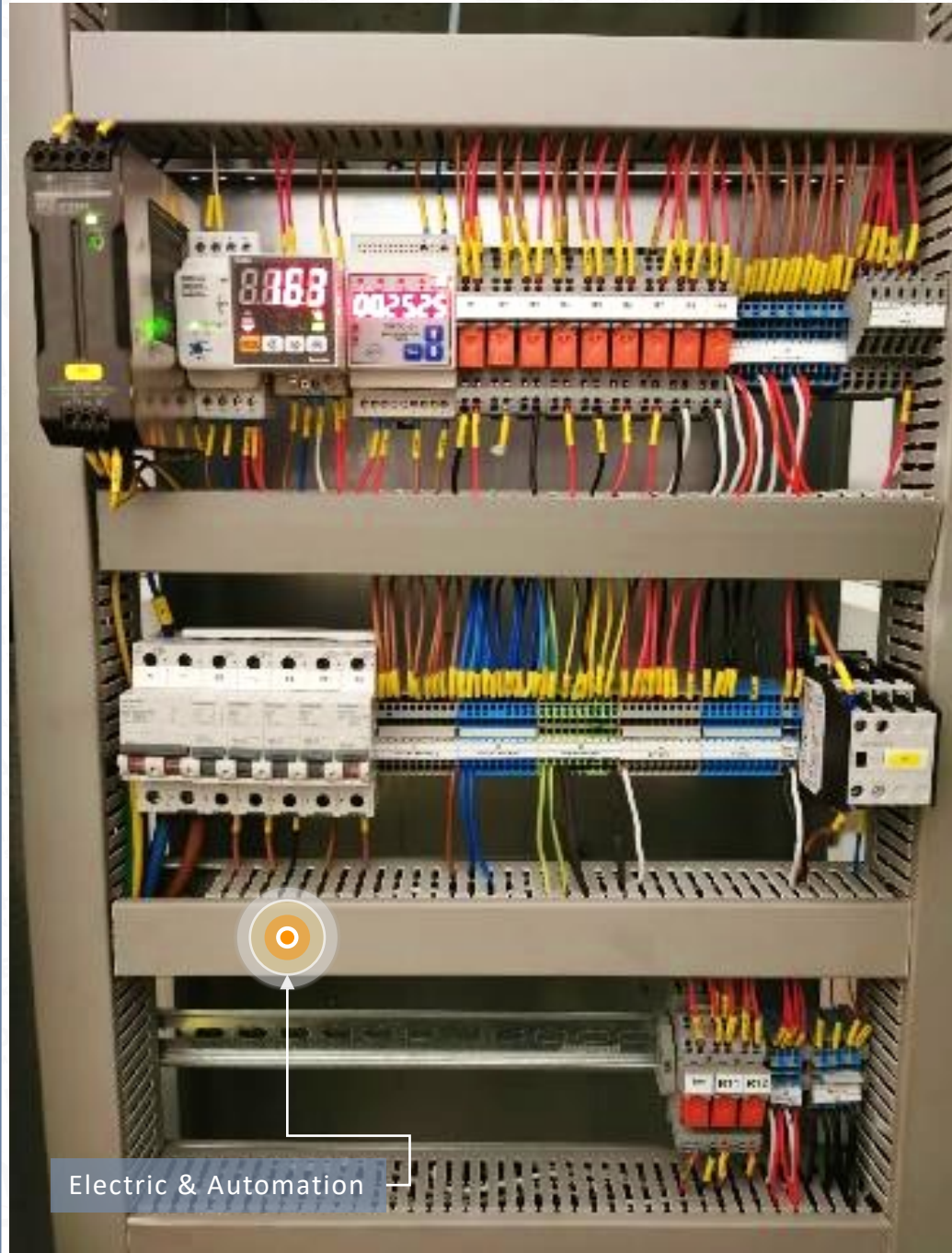
7.552 m. Instrumentation Cable

30 pcs LV Motor

830 m. Cable Tray

Design, procurement, installation, test and commissioning of electrical and instrumentation systems were completed by Deha Tech





Electric & Automation



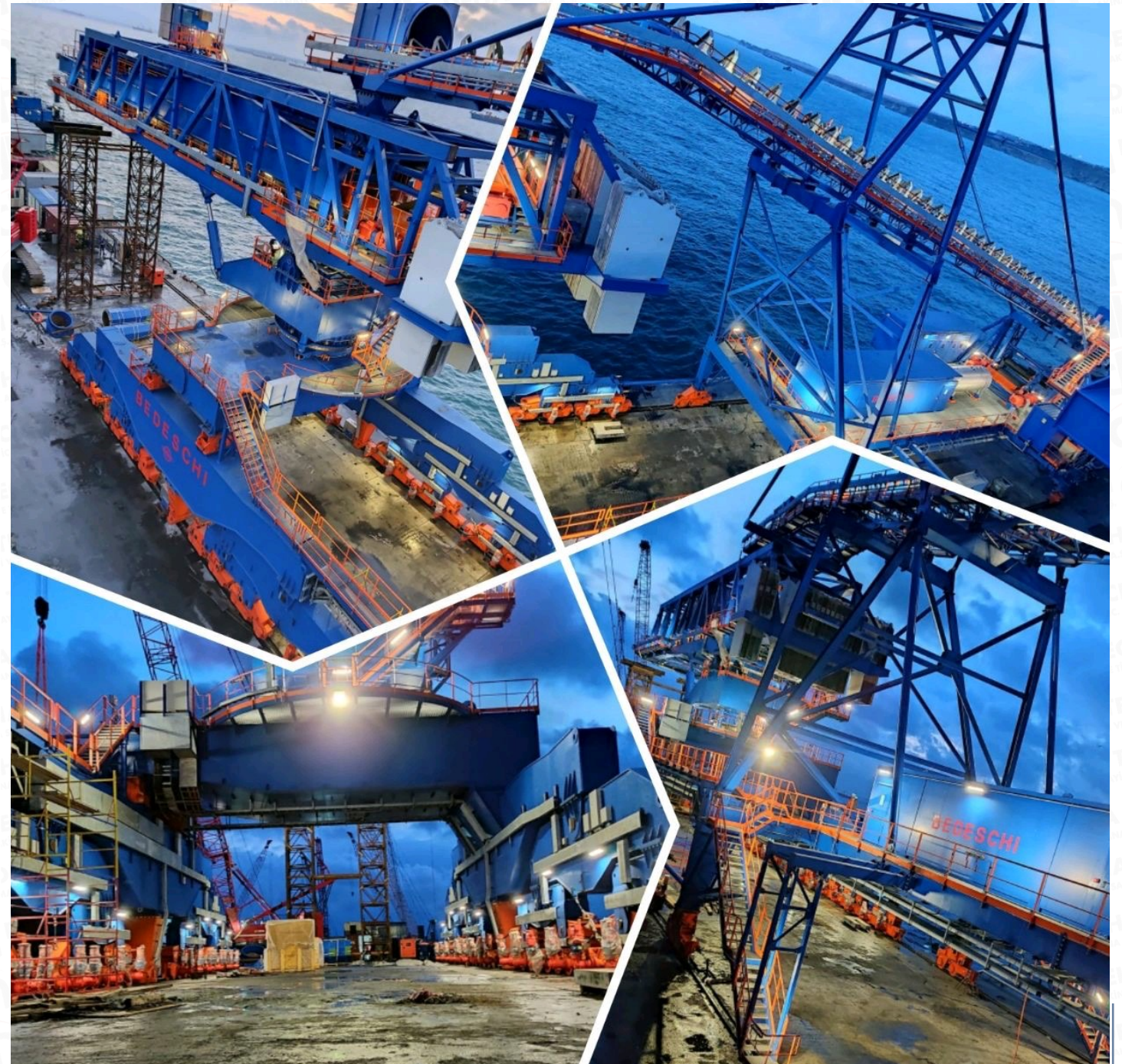
Electric & Automation Test and Commissioning

TAMAN PORT SHIP-LOADER ELECTRICAL & INSTRUMENTATION SYSTEMS

Deha Tech Scope of Works

12 Set	Remote I/O Panel
8 Set	MCC Panel
8 set	MV/LV Transformer
580 pcs	Instrument
736 pcs	Lighting Fixture
96.060 m.	LV-MV-instrumentation Cable
324 pcs	Local Box, Junction Box
4.036 m.	Cable Tray

Installation, test and commissioning of electrical and instrumentation systems were completed by Deha Tech



TAMAN PORT SHIP-LOADER ELECTRICAL & INSTRUMENTATION SYSTEMS



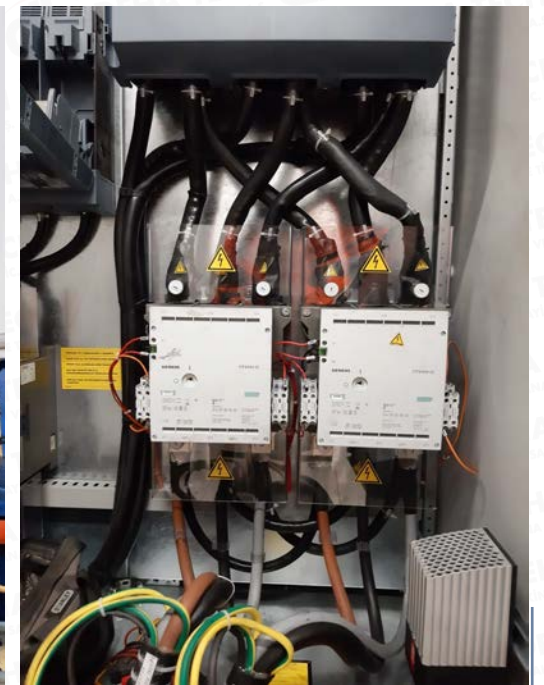
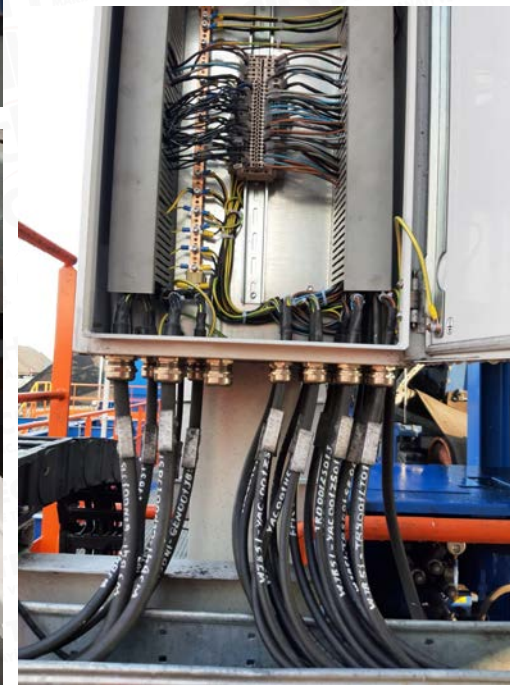
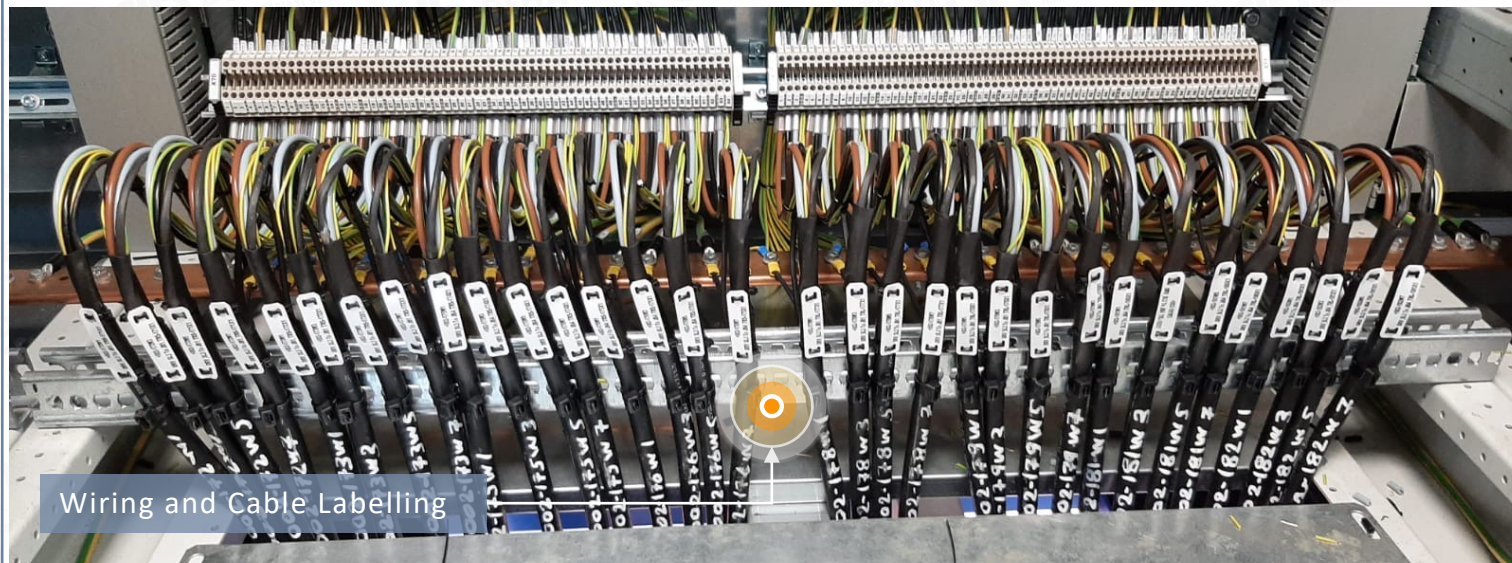
Electrical & Instrumentation Systems



TAMAN PORT SHIP-LOADER ELECTRICAL & INSTRUMENTATION SYSTEMS



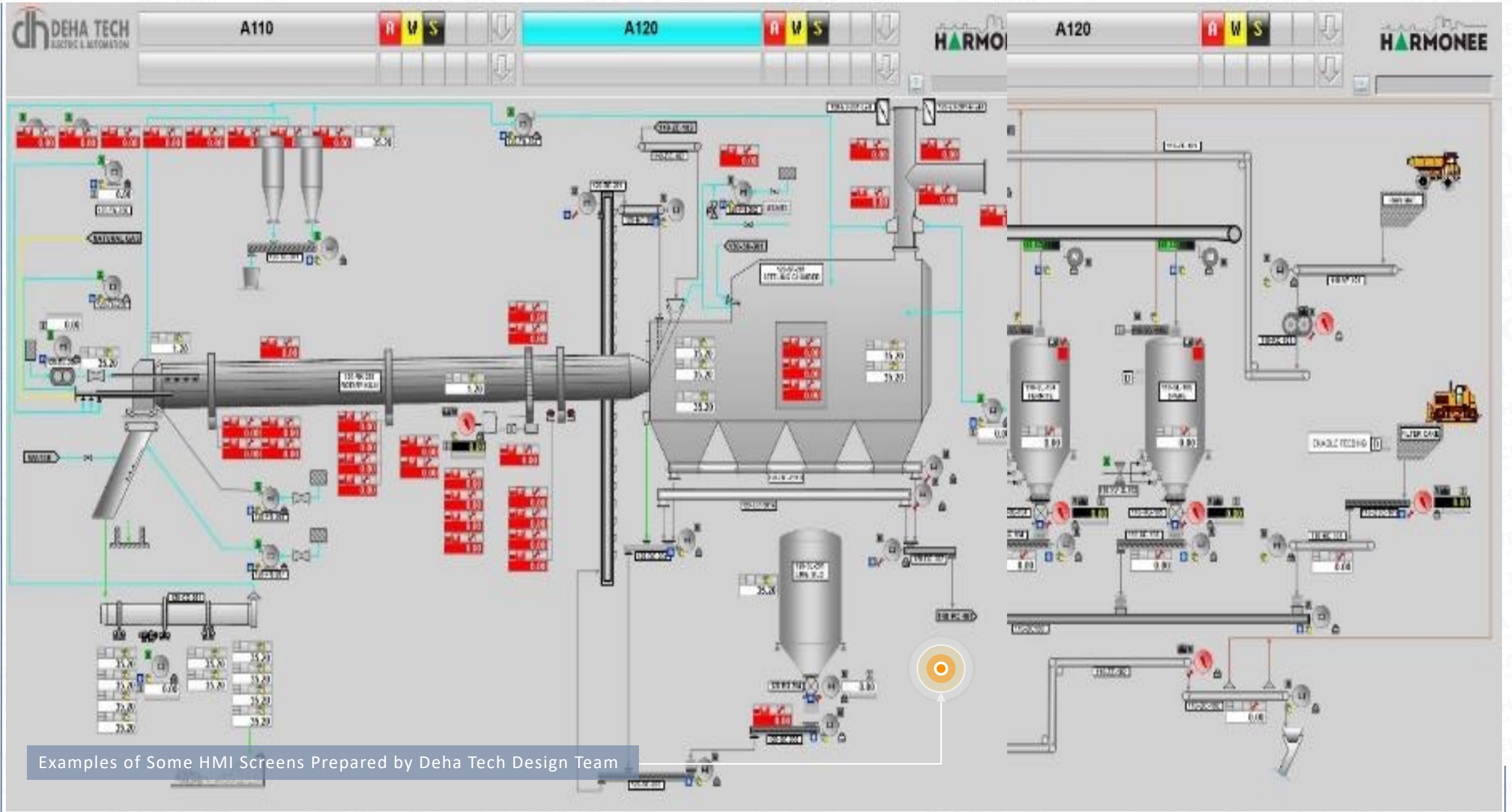
ELECTRICAL & INSTRUMENTATION SYSTEMS



ELECTRICAL & INSTRUMENTATION SYSTEMS



ELECTRIC AND AUTOMATION OF HARMONEE WAE LZ FACILITY



Examples of Some HMI Screens Prepared by Deha Tech Design Team

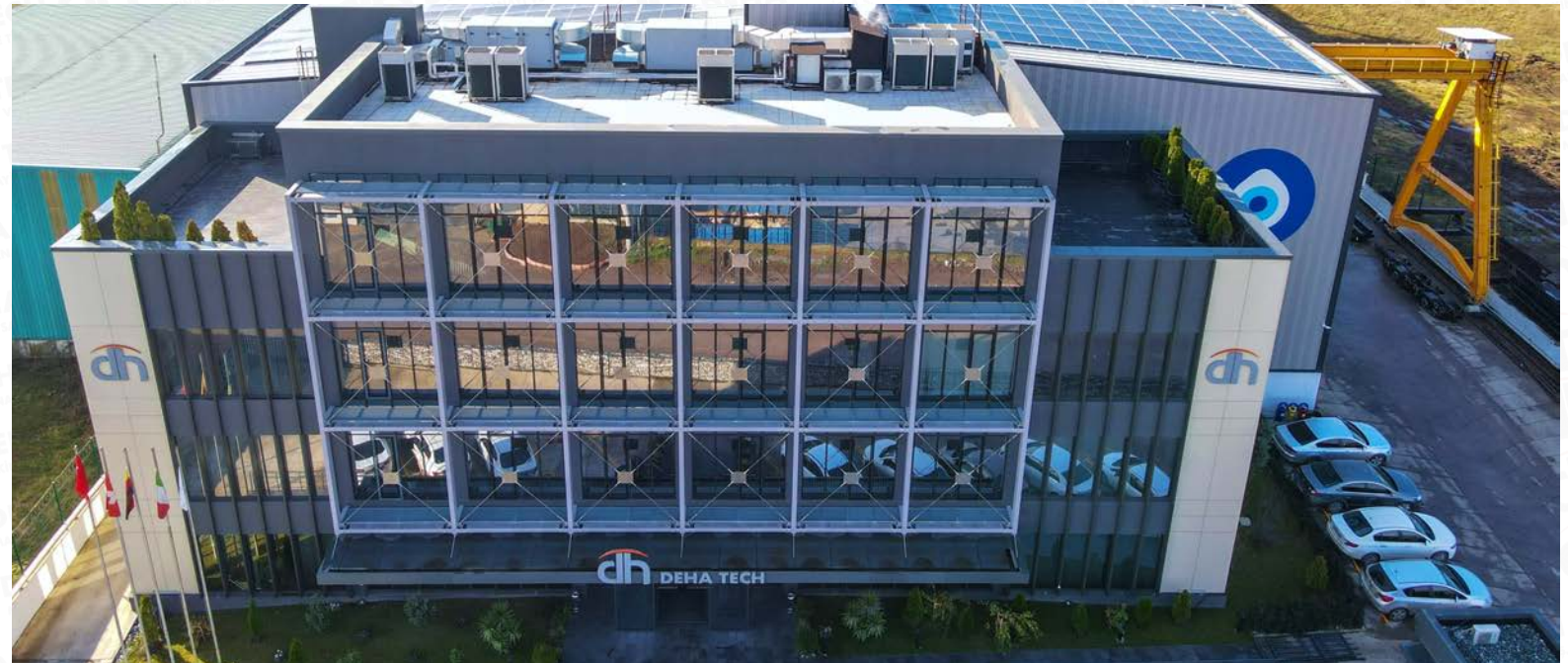
A large group of employees, mostly men wearing yellow hard hats and dark work uniforms with reflective stripes, are posed in several rows in front of a modern building. The building has large glass windows and a prominent logo consisting of the letters 'dh' in a stylized font with an orange arc above it, followed by the text 'DEHA TECH' in large, bold, grey letters. Some employees in the front row are wearing white hard hats and high-visibility yellow safety vests. The scene is set outdoors during the day.

dh DEHA TECH

MANUFACTURING PLANTS

KARTEPE FACTORY 1 PROFILE

Location	Kartepe	Status	Active
Open Area	18.000 m ²	Closed Area	10.000 m ²
Production Capacity	4.800 t	Personnel	150
Main Equipment	1500 mm x 300 mm Hydraulic Press 300 t HPK 100 Profile and Pipe Rolling Machine MIG / MAG Welding Machines TIG Welding Machines Aluminium Welding Machines Submerged Arc Welding Machines Sleeve Welding Machine Electric Welding Machine Screw Lathe Weighing Machine 150 t Band Saw Cutting Machine, D 1000 mm Radial Drill + Threading, Hole D 50 mm 3 x 4 Rolls Hydraulic Plate Bending Machine Up to 80 mm x 3000 mm Bending Capacity Up to 12 mm x 3000 mm Bending Capacity Up to 60 mm x 3000 mm Bending Capacity		
Crane Capacity	8 x 30 t Overhead Cranes x (h) 9.5 m 1 x 20 t Portal Crane x (h) 9.5 m 2 x 25 t Portal Cranes x (h) 9.5 m 1 x 30 t Portal Crane x (h) 9.5 m 1 x 15 t Portal Crane x (h) 9.5 m		



KARTEPE FACTORY 2 PROFILE

Location	Kartepe
Status	Active
Open Area	2.500 m ²
Closed Area	2.500 m ²
Production Capacity	5.000 t
Personnel	40
Main Equipment	3 m x 12 m CNC Plasma + Oksi (Angle Cutting) 2,5 m x 12 m CNC Plasma (Angle Cutting) 12 m Plasma Pipe Cutting Machine Band Saw Cutting Machine Radial Drill + Threading, Hole D 50 mm 7100*600 mm Hydraulic Bending 700 t 1020*150 mm Hydraulic Bending 150 t 4000*440 mm Hydraulic Bending 440 t Screw Lathe Sand Blasting Cabinet & Paint Area CNC Milling Machine Universal Milling Machine Turning Lathe CNC Turning Machine
Crane Capacity	4 x 10 t Crane x (h) 7.3 m



GEBZE FACTORY PROFILE

Location	Gebze
Status	Active
Open Area	1.000 m ²
Closed Area	3.000 m ²
Production Capacity	2.200 t
Personnel	65
Main Equipment	3 m x 12 m CNC Plasma + Oksi (Angle Cutting) Radial Drill + Threading, Hole D 50 mm Band Saw Cutting Machine Screw Lathe 2 x Submerged Arc Welding Machines MIG / MAG Welding Machines TIG Welding Machine Electric Welding Machine 4 Roll 40 mm x 3000 mm Bending Machine Up to 30 mm x 3000 mm Bending Capacity
Crane Capacity	1 x 30 t Overhead Crane x (h) 8 m 2 x 20 t Overhead Crane x (h) 8 m 1 x 10 t Portal Crane x (h) 8 m



HAYDARPASA PORT PROFILE

Location	Haydarpaşa Port
Status	Active
Open Area	50.000 m ²
Closed Area	1.000 m ²
Production Capacity	4.500 Tons
Personnel	230



KARTEPE FACTORY 1 GENERAL VIEW

150 Ton Weighbridge (24m x 3m)

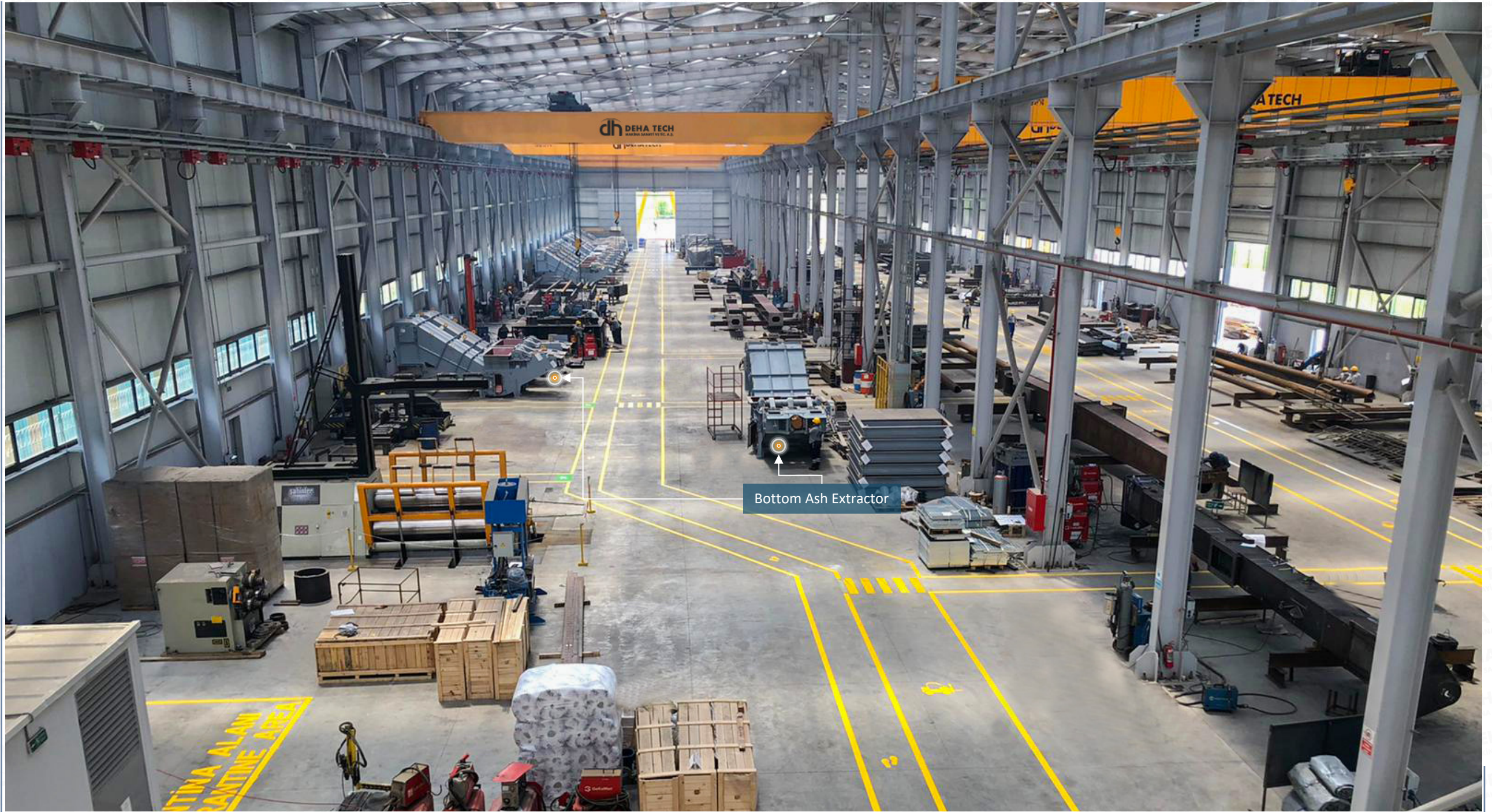
20 Ton Gantry Crane

25 Ton Gantry Cranes

30 + 15 Ton Gantry Crane

Deha Tech continues to provide the highest quality services worldwide at full speed, with a total of 2000 employees, 4 factories and 1 port in a 59000 sqm production area.

DEHA TECH KARTEPE FACTORY INTERIOR VIEW



Bottom Ash Extractor

DEHA TECH KARTEPE FACTORY GENERAL VIEW



DEHA TECH KARTEPE FACTORY 2

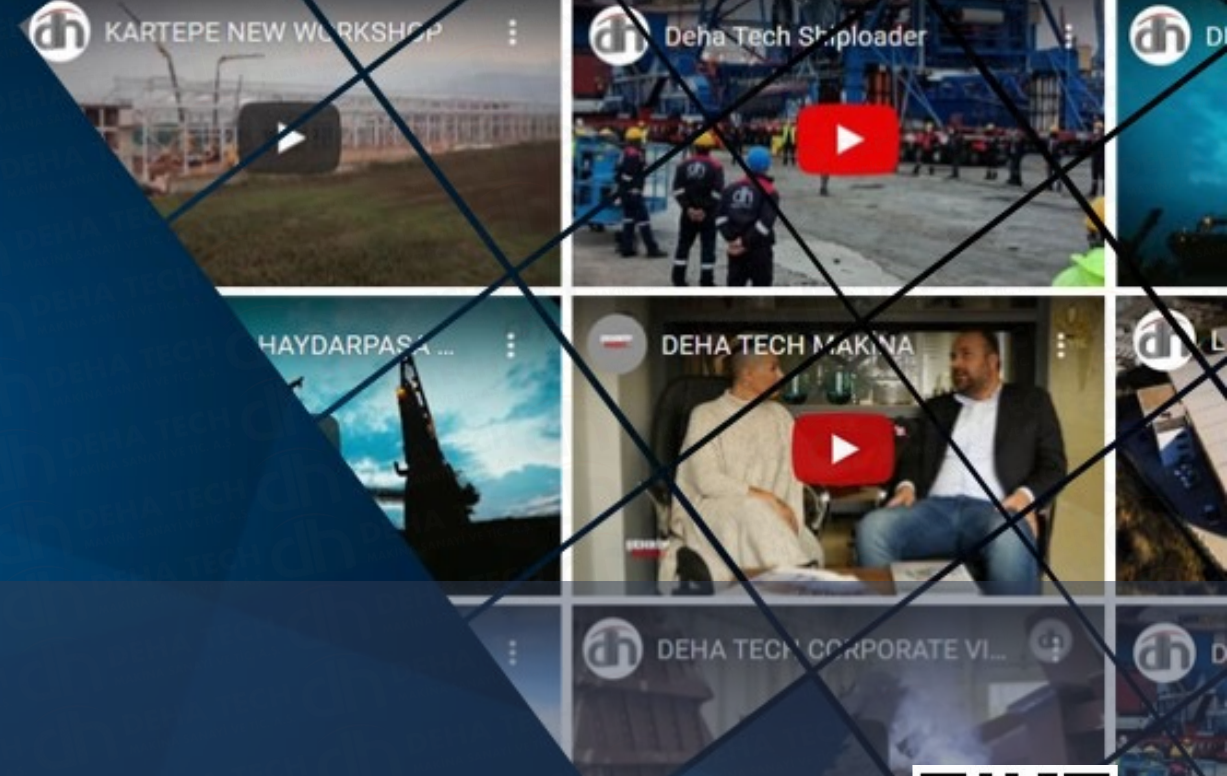
DEHA TECH KARTEPE FACTORY 1

Fast Response

Technology Driven Projects

Sustainable Profitability and Financial Stability

DEHA TECH`S CONTACT DETAILS



www.dehatech.com

▶ Deha Tech Headquarters

A : Kemeraltı Caddesi No:28, Pk:34425,
Müeyyedzade Mahallesi, Karaköy /
İSTANBUL / TR

W : info@dehatech.com

W : www.dehatech.com

T : +90 212 252 48 00

▶ Kartepe Factories

A : Arslanbey Mahallesi, Yeşilevler Sokak,
No:5, Pk:41285, Kartepe / KOCAELİ / TR

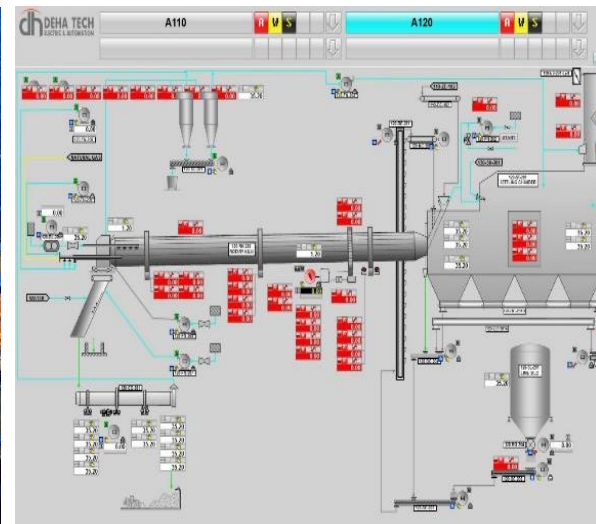
A : Arslanbey OSB Mahallesi, 3. Sokak,
No:12, Pk:41285, Kartepe / KOCAELİ / TR

▶ Gebze Factory

A : Barış, Koşuyolu Cd. No:23, Pk: 41400
Gebze/Kocaeli



Genius Solutions For Industrial Projects



THANK YOU

www.dehatech.com